

Daily Summary for Amman Stock Exchange

VALUE TRADED (JD)

	2019	2020	NET CHANGE	CHANGE (%)
Daily	3,064,827	5,703,039	2,638,212	86.08%
Cumulative(1/11-4/11)	25,851,615	18,012,255	-7,839,360	-30.32%
Cumulative(2/1-4/11)	1,362,909,174	808,104,965	-554,804,209	-40.71%

NO. OF SHARES TRADED

	2019	2020	NET CHANGE	CHANGE (%)
Daily	2,496,008	6,381,511	3,885,503	155.67%
Cumulative(1/11-4/11)	24,339,935	20,607,910	-3,732,025	-15.33%
Cumulative(2/1-4/11)	1,046,439,890	896,671,933	-149,767,957	-14.31%

NO. OF TRANSACTIONS

	2019	2020	NET CHANGE	CHANGE (%)
Daily	1,568	1,910	342	21.81%
Cumulative(1/11-4/11)	6,516	6,983	467	7.17%
Cumulative(2/1-4/11)	437,364	341,736	-95,628	-21.86%

SOME FINANCIAL RATIOS FOR THE ASE (4/11/2020)

SECTOR	P/E	P/BV	DIVIDEND YIELD (%)	TURNOVER (%)
FINANCIAL	8.838	0.716	0.175	0.068
SERVICES	11.042	0.960	5.540	0.146
INDUSTRY	15.281	1.143	4.186	0.194
OVERALL	9.375	0.798	1.938	0.100

STOCK PRICE INDEX WEIGHTED BY FREE FLOAT MARKET CAPITALIZATION (1999=1000)

	TUESDAY 03/11/2020	WEDNESDAY 04/11/2020	% CHANGE	
			DAY BEFORE	YTD
GENERAL	1536.8	1533.4	-0.22%	-15.53%
FINANCIAL	2047.9	2047.8	-0.01%	-16.42%
SERVICES	1060.8	1049.8	-1.04%	-18.81%
INDUSTRY	1894.2	1902.9	0.46%	2.47%

STOCK PRICE INDEX WEIGHTED BY FREE FLOAT MARKET CAPITALIZATION ASE20 (2014=1000)

	744.7	743.1	-0.20%	-16.59%
--	-------	-------	--------	---------

STOCK PRICE INDEX WEIGHTED BY MARKET CAPITALIZATION (1991=1000)

	TUESDAY 03/11/2020	WEDNESDAY 04/11/2020	% CHANGE	
			DAY BEFORE	YTD
GENERAL	2859.2	2862.7	0.12%	-18.53%
BANKS	5197.2	5212.5	0.29%	-26.54%
INSURANCE	1281.8	1281.1	-0.05%	-0.11%
SERVICES	662.7	661.2	-0.23%	-10.14%
INDUSTRY	2496.6	2495.8	-0.03%	-4.49%

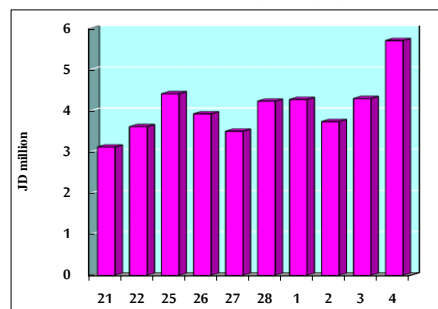
STOCK PRICE MARKET INDEX WEIGHTED BY FREE FLOAT MARKET CAP. (2012=1000)

	TUESDAY 03/11/2020	WEDNESDAY 04/11/2020	% CHANGE	
			DAY BEFORE	YTD
FIRST MARKET	803.0	801.3	-0.21%	-16.17%
SECOND MARKET	813.5	812.3	-0.16%	-2.84%

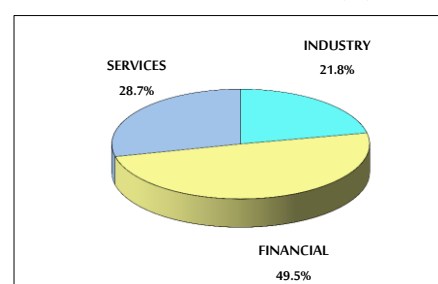
MARKET CAPITALIZATION (JD)

	12,201,544,020	12,214,010,005	0.10%	-18.11%
--	----------------	----------------	-------	---------

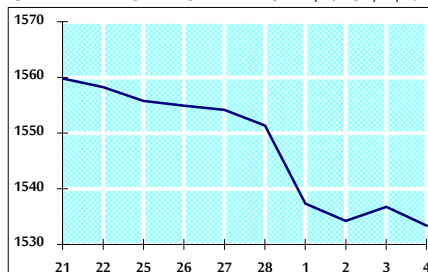
VALUE TRADED FROM 21/10 TO 4/11/2020



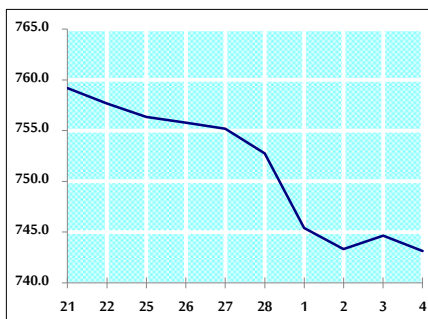
VALUE TRADED BY SECTOR WEDNESDAY 4/11/2020



GENERAL FREE FLOAT PRICE INDEX FROM 21/10 TO 4/11/2020



ASE20 FREE FLOAT PRICE INDEX FROM 21/10 TO 4/11/2020



GENERAL PRICE INDEX FROM 21/10 TO 4/11/2020

