

## Daily Summary for Amman Stock Exchange

### VALUE TRADED (JD)

	2020	2021	NET CHANGE	CHANGE (%)
Daily	3,738,183	7,746,989	4,008,806	107.24%
Cumulative (1/11-3/11)	8,012,765	13,460,187	5,447,422	67.98%
Cumulative (3/1-3/11)	798,105,475	1,684,570,147	886,464,672	111.07%

### NO. OF SHARES TRADED

	2020	2021	NET CHANGE	CHANGE (%)
Daily	4,217,274	7,309,679	3,092,405	73.33%
Cumulative (1/11-3/11)	9,376,136	12,463,790	3,087,654	32.93%
Cumulative (3/1-3/11)	885,440,159	1,319,139,977	433,699,818	48.98%

### NO. OF TRANSACTIONS

	2020	2021	NET CHANGE	CHANGE (%)
Daily	1,411	3,749	2,338	165.70%
Cumulative (1/11-3/11)	3,109	7,132	4,023	129.40%
Cumulative (3/1-3/11)	337,862	684,469	346,607	102.59%

### SOME FINANCIAL RATIOS FOR THE ASE (3/11/2021)

SECTOR	P/E	P/BV	DIVIDEND YIELD (%)	TURNOVER (%)
FINANCIAL	34.938	0.867	3.279	0.130
SERVICES	-	1.283	2.227	0.066
INDUSTRY	28.638	2.146	2.609	0.127
OVERALL	37.667	1.124	2.955	0.116

### STOCK PRICE INDEX WEIGHTED BY FREE FLOAT MARKET CAPITALIZATION (1999=1000)

	MONDAY 01/11/2021	WEDNESDAY 03/11/2021	% CHANGE	
			DAY BEFORE	YTD
GENERAL	2115.2	2116.2	0.05%	27.70%
FINANCIAL	2571.8	2572.3	0.02%	18.45%
SERVICES	1349.3	1351.1	0.14%	17.69%
INDUSTRY	3681.2	3695.4	0.38%	74.34%

### STOCK PRICE INDEX WEIGHTED BY FREE FLOAT MARKET CAPITALIZATION ASE20 (2014=1000)

	1069.0	1069.5	0.04%	32.61%
--	--------	--------	-------	--------

### STOCK PRICE INDEX WEIGHTED BY MARKET CAPITALIZATION (1991=1000)

	MONDAY 01/11/2021	WEDNESDAY 03/11/2021	% CHANGE	
			DAY BEFORE	YTD
GENERAL	4021.3	4042.6	0.53%	32.56%
BANKS	6534.3	6552.2	0.27%	21.10%
INSURANCE	1395.1	1396.8	0.12%	6.69%
SERVICES	804.0	807.3	0.40%	14.63%
INDUSTRY	4722.9	4770.6	1.01%	69.29%

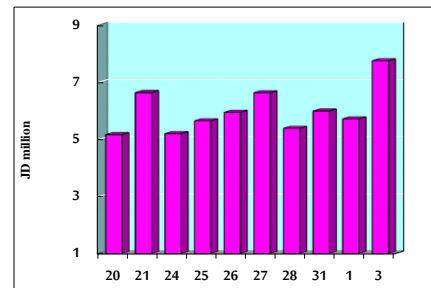
### STOCK PRICE MARKET INDEX WEIGHTED BY FREE FLOAT MARKET CAP. (2012=1000)

	MONDAY 01/11/2021	WEDNESDAY 03/11/2021	% CHANGE	
			DAY BEFORE	YTD
FIRST MARKET	1140.2	1141.3	0.10%	31.43%
SECOND MARKET	943.8	939.9	-0.41%	7.87%

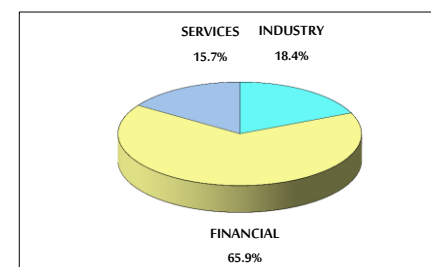
### MARKET CAPITALIZATION (JD)

	15,541,224,082	15,636,795,603	0.61%	21.14%
--	----------------	----------------	-------	--------

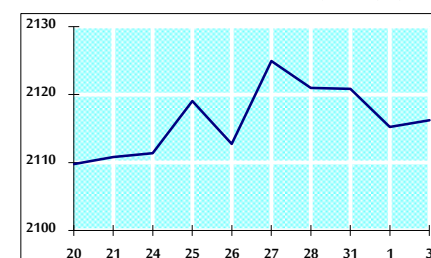
### VALUE TRADED FROM 20/10 TO 3/11/2021



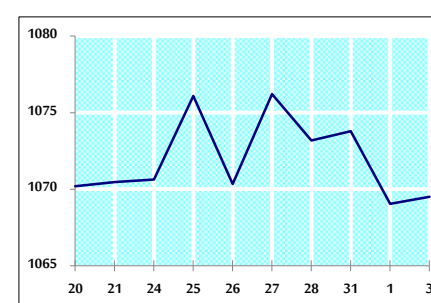
### VALUE TRADED BY SECTOR WEDNESDAY 3/11/2021



### GENERAL FREE FLOAT PRICE INDEX FROM 20/10 TO 3/11/2021



### ASE20 FREE FLOAT PRICE INDEX FROM 20/10 TO 3/11/2021



### GENERAL PRICE INDEX FROM 20/10 TO 3/11/2021

