

Daily Summary for Amman Stock Exchange

VALUE TRADED (JD)

	2021	2022	NET CHANGE	CHANGE (%)
Daily	13,882,057	13,158,223	-723,834	-5.21%
Cumulative (1/6-14/6)	117,615,102	87,517,273	-30,097,829	-25.59%
Cumulative (2/1-14/6)	985,772,436	829,688,453	-156,083,983	-15.83%

NO. OF SHARES TRADED

	2021	2022	NET CHANGE	CHANGE (%)
Daily	7,597,863	9,051,626	1,453,763	19.13%
Cumulative (1/6-14/6)	76,064,291	48,507,539	-27,556,752	-36.23%
Cumulative (2/1-14/6)	826,350,820	487,717,961	-338,632,859	-40.98%

NO. OF TRANSACTIONS

	2021	2022	NET CHANGE	CHANGE (%)
Daily	5,404	3,417	-1,987	-36.77%
Cumulative (1/6-14/6)	45,991	30,651	-15,340	-33.35%
Cumulative (2/1-14/6)	370,607	331,580	-39,027	-10.53%

SOME FINANCIAL RATIOS FOR THE ASE (14/6/2022)

SECTOR	P/E	P/BV	DIVIDEND YIELD (%)	TURNOVER (%)
FINANCIAL	13.743	0.832	4.995	0.188
SERVICES	17.374	1.321	4.382	0.060
INDUSTRY	12.792	2.922	3.920	0.047
OVERALL	13.476	1.269	4.555	0.146

STOCK PRICE INDEX WEIGHTED BY FREE FLOAT MARKET CAPITALIZATION (1999=1000)

	MONDAY 13/06/2022	TUESDAY 14/06/2022	% CHANGE	
			DAY BEFORE	YTD
GENERAL	2428.8	2430.7	0.08%	14.73%
FINANCIAL	2617.4	2619.9	0.10%	0.59%
SERVICES	1575.9	1573.1	-0.18%	18.50%
INDUSTRY	5674.7	5692.0	0.30%	55.27%

STOCK PRICE INDEX WEIGHTED BY FREE FLOAT MARKET CAPITALIZATION ASE20 (2014=1000)

	1297.6	1298.3	0.05%	20.84%
--	--------	--------	-------	--------

Total Return Index ASETR (2021=1074)

	1379.5	1380.2	0.05%	28.46%
--	--------	--------	-------	--------

STOCK PRICE INDEX WEIGHTED BY MARKET CAPITALIZATION (1991=1000)

	MONDAY 13/06/2022	TUESDAY 14/06/2022	% CHANGE	
			DAY BEFORE	YTD
GENERAL	4828.2	4828.1	0.00%	20.54%
BANKS	6514.9	6510.0	-0.08%	-0.86%
INSURANCE	1304.1	1304.1	0.00%	-1.82%
SERVICES	774.1	773.9	-0.03%	-1.09%
INDUSTRY	7705.0	7710.5	0.07%	64.04%

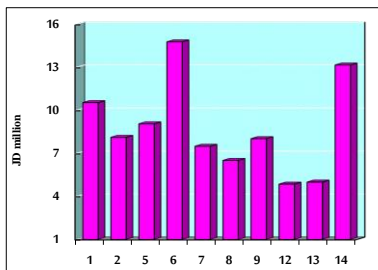
STOCK PRICE MARKET INDEX WEIGHTED BY FREE FLOAT MARKET CAP. (2012=1000)

	MONDAY 13/06/2022	TUESDAY 14/06/2022	% CHANGE	
			DAY BEFORE	YTD
FIRST MARKET	1358.8	1359.6	0.06%	18.75%
SECOND MARKET	804.2	806.7	0.31%	-13.87%

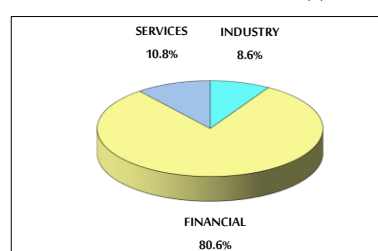
MARKET CAPITALIZATION (JD)

	18,370,472,472	18,369,546,342	-0.01%	18.55%
--	----------------	----------------	--------	--------

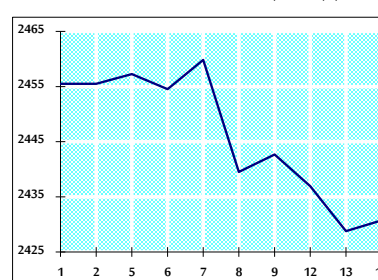
VALUE TRADED FROM 1/6 TO 14/6/2022



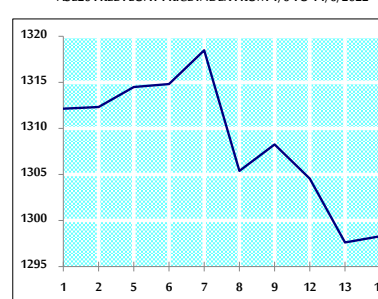
VALUE TRADED BY SECTOR TUESDAY 14/6/2022



GENERAL FREE FLOAT PRICE INDEX FROM 1/6 TO 14/6/2022



ASE20 FREE FLOAT PRICE INDEX FROM 1/6 TO 14/6/2022



GENERAL PRICE INDEX FROM 1/6 TO 14/6/2022

