

### Daily Summary for Amman Stock Exchange

VALUE TRADED (JD)

	2021	2022	NET CHANGE	CHANGE (%)
Daily	4,537,223	8,718,016	4,180,793	92.14%
Cumulative (1/8-22/8)	92,915,885	146,742,757	53,826,872	57.93%
Cumulative (2/1-22/8)	1,346,333,788	1,298,480,684	-47,853,104	-3.55%

NO. OF SHARES TRADED

	2021	2022	NET CHANGE	CHANGE (%)
Daily	4,945,631	6,002,283	1,056,652	21.37%
Cumulative (1/8-22/8)	71,922,665	79,375,035	7,452,370	10.36%
Cumulative (2/1-22/8)	1,061,778,963	757,290,541	-304,488,422	-28.68%

NO. OF TRANSACTIONS

	2021	2022	NET CHANGE	CHANGE (%)
Daily	2,334	2,954	620	26.56%
Cumulative (1/8-22/8)	42,850	59,008	16,158	37.71%
Cumulative (2/1-22/8)	524,626	512,600	-12,026	-2.29%

SOME FINANCIAL RATIOS FOR THE ASE (22/8/2022)

SECTOR	P/E	P/BV	DIVIDEND YIELD (%)	TURNOVER (%)
FINANCIAL	14.273	0.863	4.810	0.049
SERVICES	19.378	1.473	3.929	0.152
INDUSTRY	12.605	2.880	3.978	0.299
OVERALL	13.744	1.301	4.425	0.097

STOCK PRICE INDEX WEIGHTED BY FREE FLOAT MARKET CAPITALIZATION (1999=1000)

	SUNDAY 21/08/2022	MONDAY 22/08/2022	% CHANGE	
			DAY BEFORE	YTD
GENERAL	2566.1	2561.4	-0.18%	20.90%
FINANCIAL	2679.4	2672.1	-0.27%	2.60%
SERVICES	1841.9	1844.6	0.15%	38.96%
INDUSTRY	5721.8	5699.9	-0.38%	55.48%

STOCK PRICE INDEX WEIGHTED BY FREE FLOAT MARKET CAPITALIZATION ASE20 (2014=1000)

	1376.9	1374.6	-0.16%	27.95%
--	--------	--------	--------	--------

Total Return Index ASETR (2021=1074)

	1463.7	1461.3	-0.16%	36.01%
--	--------	--------	--------	--------

STOCK PRICE INDEX WEIGHTED BY MARKET CAPITALIZATION (1991=1000)

	SUNDAY 21/08/2022	MONDAY 22/08/2022	% CHANGE	
			DAY BEFORE	YTD
GENERAL	4934.0	4922.2	-0.24%	22.89%
BANKS	6674.3	6653.5	-0.31%	1.33%
INSURANCE	1287.3	1284.5	-0.22%	-3.30%
SERVICES	822.1	824.0	0.24%	5.32%
INDUSTRY	7789.7	7767.4	-0.29%	65.25%

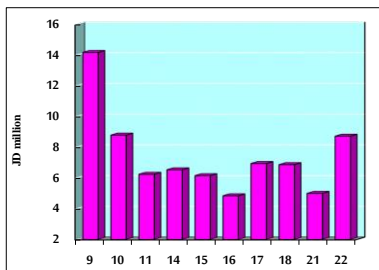
STOCK PRICE MARKET INDEX WEIGHTED BY FREE FLOAT MARKET CAP. (2012=1000)

	SUNDAY 21/08/2022	MONDAY 22/08/2022	% CHANGE	
			DAY BEFORE	YTD
FIRST MARKET	1439.2	1437.5	-0.12%	25.56%
SECOND MARKET	821.8	817.3	-0.55%	-12.73%

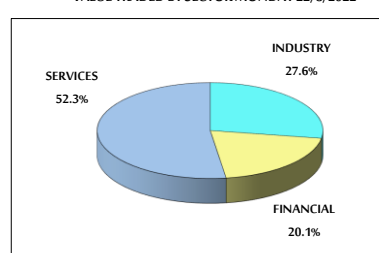
MARKET CAPITALIZATION (JD)

	18,887,227,606	18,842,974,686	-0.23%	21.60%
--	----------------	----------------	--------	--------

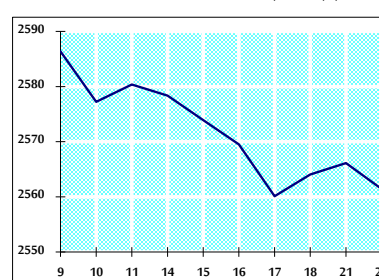
VALUE TRADED FROM 9/8 TO 22/8/2022



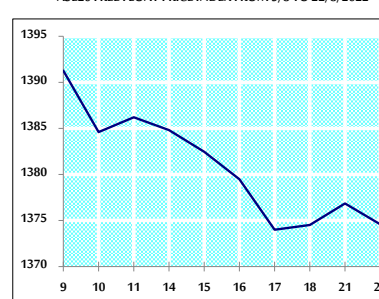
VALUE TRADED BY SECTOR MONDAY 22/8/2022



GENERAL FREE FLOAT PRICE INDEX FROM 9/8 TO 22/8/2022



ASE20 FREE FLOAT PRICE INDEX FROM 9/8 TO 22/8/2022



GENERAL PRICE INDEX FROM 9/8 TO 22/8/2022

