

Daily Summary for Amman Stock Exchange

VALUE TRADED (JD)

	2021	2022	NET CHANGE	CHANGE (%)
Daily	5,066,492	6,242,176	1,175,684	23.21%
Cumulative (1/8-11/8)	59,061,918	101,679,398	42,617,480	72.16%
Cumulative (2/1-11/8)	1,312,479,821	1,253,417,325	-59,062,496	-4.50%

NO. OF SHARES TRADED

	2021	2022	NET CHANGE	CHANGE (%)
Daily	3,321,295	4,142,634	821,339	24.73%
Cumulative (1/8-11/8)	42,584,245	49,773,089	7,188,844	16.88%
Cumulative (2/1-11/8)	1,032,440,543	727,688,595	-304,751,948	-29.52%

NO. OF TRANSACTIONS

	2021	2022	NET CHANGE	CHANGE (%)
Daily	2,084	2,992	908	43.57%
Cumulative (1/8-11/8)	23,971	38,903	14,932	62.29%
Cumulative (2/1-11/8)	505,747	492,495	-13,252	-2.62%

SOME FINANCIAL RATIOS FOR THE ASE (11/8/2022)

SECTOR	P/E	P/BV	DIVIDEND YIELD (%)	TURNOVER (%)
FINANCIAL	14.329	0.867	4.791	0.066
SERVICES	19.610	1.491	3.882	0.088
INDUSTRY	12.520	2.860	4.005	0.034
OVERALL	13.754	1.302	4.421	0.067

STOCK PRICE INDEX WEIGHTED BY FREE FLOAT MARKET CAPITALIZATION (1999=1000)

	WEDNESDAY 10/08/2022	THURSDAY 11/08/2022	% CHANGE	
			DAY BEFORE	YTD
GENERAL	2577.2	2580.4	0.12%	21.79%
FINANCIAL	2693.2	2697.4	0.16%	3.57%
SERVICES	1856.5	1863.3	0.37%	40.37%
INDUSTRY	5689.2	5671.7	-0.31%	54.71%

STOCK PRICE INDEX WEIGHTED BY FREE FLOAT MARKET CAPITALIZATION ASE20 (2014=1000)

	1384.6	1386.2	0.12%	29.03%
--	--------	--------	-------	--------

Total Return Index ASETR (2021=1074)

	1471.9	1473.6	0.12%	37.16%
--	--------	--------	-------	--------

STOCK PRICE INDEX WEIGHTED BY MARKET CAPITALIZATION (1991=1000)

	WEDNESDAY 10/08/2022	THURSDAY 11/08/2022	% CHANGE	
			DAY BEFORE	YTD
GENERAL	4932.2	4925.8	-0.13%	22.98%
BANKS	6682.8	6671.2	-0.17%	1.60%
INSURANCE	1293.5	1303.2	0.75%	-1.90%
SERVICES	824.0	830.4	0.77%	6.13%
INDUSTRY	7764.5	7737.3	-0.35%	64.61%

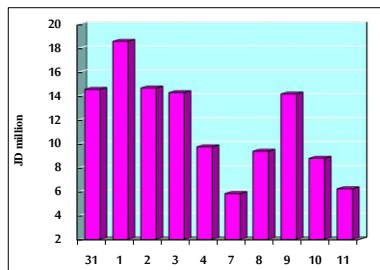
STOCK PRICE MARKET INDEX WEIGHTED BY FREE FLOAT MARKET CAP. (2012=1000)

	WEDNESDAY 10/08/2022	THURSDAY 11/08/2022	% CHANGE	
			DAY BEFORE	YTD
FIRST MARKET	1445.4	1446.9	0.10%	26.37%
SECOND MARKET	822.7	827.0	0.53%	-11.70%

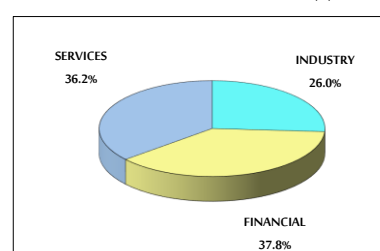
MARKET CAPITALIZATION (JD)

	18,882,228,539	18,858,646,807	-0.12%	21.70%
--	----------------	----------------	--------	--------

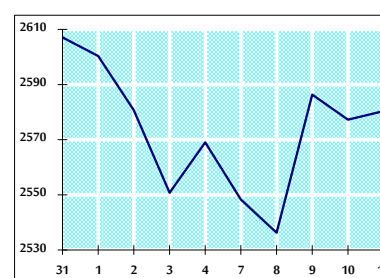
VALUE TRADED FROM 31/7 TO 11/8/2022



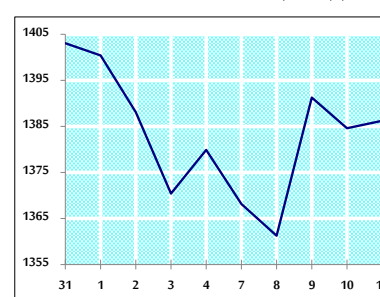
VALUE TRADED BY SECTOR THURSDAY 11/8/2022



GENERAL FREE FLOAT PRICE INDEX FROM 31/7 TO 11/8/2022



ASE20 FREE FLOAT PRICE INDEX FROM 31/7 TO 11/8/2022



GENERAL PRICE INDEX FROM 31/7 TO 11/8/2022

