

Daily Summary for Amman Stock Exchange

VALUE TRADED (JD)

	2021	2022	NET CHANGE	CHANGE (%)
Daily	5,232,942	7,746,591	2,513,649	48.04%
Cumulative (2/10-11/10)	54,780,367	40,157,188	-14,623,179	-26.69%
Cumulative (2/1-11/10)	1,603,232,821	1,608,247,274	5,014,453	0.31%

NO. OF SHARES TRADED

	2021	2022	NET CHANGE	CHANGE (%)
Daily	4,095,647	6,827,548	2,731,901	66.70%
Cumulative (2/10-11/10)	37,161,661	31,503,849	-5,657,812	-15.22%
Cumulative (2/1-11/10)	1,248,359,571	919,874,263	-328,485,308	-26.31%

NO. OF TRANSACTIONS

	2021	2022	NET CHANGE	CHANGE (%)
Daily	2,886	4,141	1,255	43.49%
Cumulative (2/10-11/10)	25,091	21,794	-3,297	-13.14%
Cumulative (2/1-11/10)	636,700	603,448	-33,252	-5.22%

SOME FINANCIAL RATIOS FOR THE ASE (11/10/2022)

SECTOR	P/E	P/BV	DIVIDEND YIELD (%)	TURNOVER (%)
FINANCIAL	14.307	0.857	4.812	0.066
SERVICES	18.969	1.441	4.015	0.186
INDUSTRY	11.823	2.700	4.242	0.250
OVERALL	13.346	1.264	4.544	0.110

STOCK PRICE INDEX WEIGHTED BY FREE FLOAT MARKET CAPITALIZATION (1999=1000)

	MONDAY 10/10/2022	TUESDAY 11/10/2022	% CHANGE	
			DAY BEFORE	YTD
GENERAL	2491.6	2502.2	0.43%	18.10%
FINANCIAL	2650.1	2656.0	0.22%	1.98%
SERVICES	1751.4	1771.7	1.16%	33.47%
INDUSTRY	5408.7	5408.8	0.00%	47.54%

STOCK PRICE INDEX WEIGHTED BY FREE FLOAT MARKET CAPITALIZATION ASE20 (2014=1000)

	1338.0	1345.1	0.53%	25.20%
--	--------	--------	-------	--------

Total Return Index ASETR (2021=1074)

	1422.4	1429.9	0.53%	33.10%
--	--------	--------	-------	--------

STOCK PRICE INDEX WEIGHTED BY MARKET CAPITALIZATION (1991=1000)

	MONDAY 10/10/2022	TUESDAY 11/10/2022	% CHANGE	
			DAY BEFORE	YTD
GENERAL	4755.0	4764.1	0.19%	18.95%
BANKS	6574.3	6592.3	0.28%	0.40%
INSURANCE	1387.8	1386.7	-0.08%	4.40%
SERVICES	822.0	830.4	1.02%	6.14%
INDUSTRY	7239.9	7230.6	-0.13%	53.83%

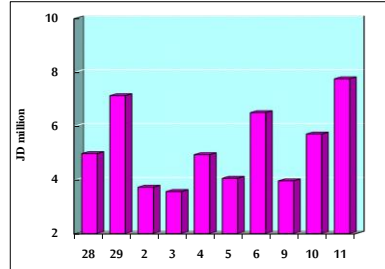
STOCK PRICE MARKET INDEX WEIGHTED BY FREE FLOAT MARKET CAP. (2012=1000)

	MONDAY 10/10/2022	TUESDAY 11/10/2022	% CHANGE	
			DAY BEFORE	YTD
FIRST MARKET	1399.2	1405.9	0.48%	22.80%
SECOND MARKET	800.9	802.1	0.15%	-14.36%

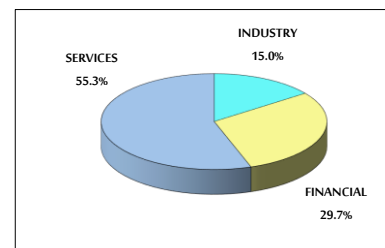
MARKET CAPITALIZATION (JD)

	18,238,361,768	18,271,032,335	0.18%	17.91%
--	----------------	----------------	-------	--------

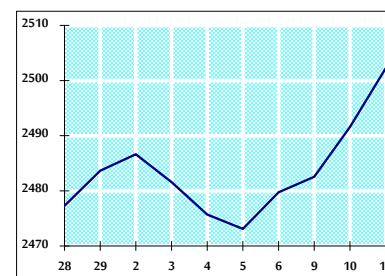
VALUE TRADED FROM 28/9 TO 11/10/2022



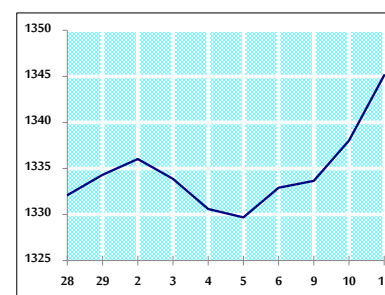
VALUE TRADED BY SECTOR TUESDAY 11/10/2022



GENERAL FREE FLOAT PRICE INDEX FROM 28/9 TO 11/10/2022



ASE20 FREE FLOAT PRICE INDEX FROM 28/9 TO 11/10/2022



GENERAL PRICE INDEX FROM 28/9 TO 11/10/2022

