

### Daily Summary for Amman Stock Exchange

VALUE TRADED (JD)

	2021	2022	NET CHANGE	CHANGE (%)
Daily	8,657,561	3,653,981	-5,003,580	-57.79%
Cumulative (1/12-8/12)	30,931,149	29,116,053	-1,815,096	-5.87%
Cumulative (2/1-8/12)	1,835,883,291	1,840,551,396	4,668,105	0.25%

NO. OF SHARES TRADED

	2021	2022	NET CHANGE	CHANGE (%)
Daily	7,508,468	3,397,307	-4,111,161	-54.75%
Cumulative (1/12-8/12)	26,810,641	26,785,953	-24,688	-0.09%
Cumulative (2/1-8/12)	1,446,679,389	1,102,563,413	-344,115,976	-23.79%

NO. OF TRANSACTIONS

	2021	2022	NET CHANGE	CHANGE (%)
Daily	3,195	2,496	-699	-21.88%
Cumulative (1/12-8/12)	18,460	14,667	-3,793	-20.55%
Cumulative (2/1-8/12)	772,106	706,850	-65,256	-8.45%

SOME FINANCIAL RATIOS FOR THE ASE (8/12/2022)

SECTOR	P/E	P/BV	DIVIDEND YIELD (%)	TURNOVER (%)
FINANCIAL	14.566	0.873	4.727	0.031
SERVICES	18.849	1.447	4.011	0.115
INDUSTRY	11.446	2.614	4.382	0.099
OVERALL	13.296	1.259	4.561	0.056

STOCK PRICE INDEX WEIGHTED BY FREE FLOAT MARKET CAPITALIZATION (1999=1000)

	WEDNESDAY 07/12/2022	THURSDAY 08/12/2022	% CHANGE	
			DAY BEFORE	YTD
GENERAL	2502.6	2505.6	0.12%	18.26%
FINANCIAL	2687.7	2686.2	-0.06%	3.14%
SERVICES	1751.5	1757.0	0.31%	32.36%
INDUSTRY	5303.0	5323.4	0.38%	45.21%

STOCK PRICE INDEX WEIGHTED BY FREE FLOAT MARKET CAPITALIZATION ASE20 (2014=1000)

	1345.5	1348.8	0.25%	25.54%
--	--------	--------	-------	--------

Total Return Index ASETR (2021=1074)

	1430.3	1433.8	0.25%	33.46%
--	--------	--------	-------	--------

STOCK PRICE INDEX WEIGHTED BY MARKET CAPITALIZATION (1991=1000)

	WEDNESDAY 07/12/2022	THURSDAY 08/12/2022	% CHANGE	
			DAY BEFORE	YTD
GENERAL	4745.6	4746.6	0.02%	18.51%
BANKS	6768.2	6750.9	-0.25%	2.81%
INSURANCE	1362.4	1345.9	-1.21%	1.32%
SERVICES	837.8	836.7	-0.13%	6.94%
INDUSTRY	6950.2	6979.3	0.42%	48.48%

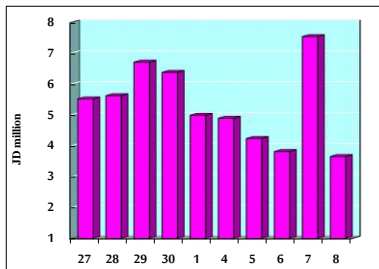
STOCK PRICE MARKET INDEX WEIGHTED BY FREE FLOAT MARKET CAP. (2012=1000)

	WEDNESDAY 07/12/2022	THURSDAY 08/12/2022	% CHANGE	
			DAY BEFORE	YTD
FIRST MARKET	1409.9	1412.7	0.20%	23.38%
SECOND MARKET	786.7	782.9	-0.48%	-16.40%

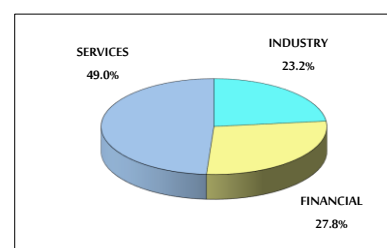
MARKET CAPITALIZATION (JD)

	18,068,015,121	18,071,146,604	0.02%	16.62%
--	----------------	----------------	-------	--------

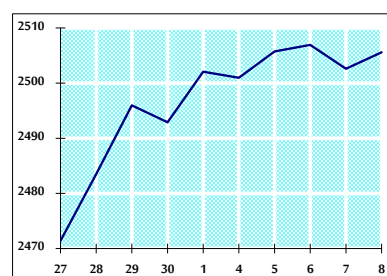
VALUE TRADED FROM 27/11 TO 8/12/2022



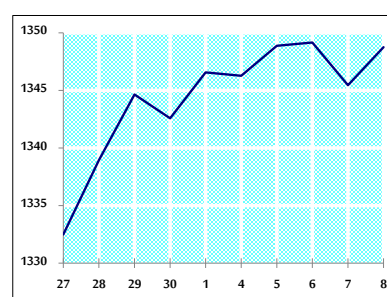
VALUE TRADED BY SECTOR THURSDAY 8/12/2022



GENERAL FREE FLOAT PRICE INDEX FROM 27/11 TO 8/12/2022



ASE20 FREE FLOAT PRICE INDEX FROM 27/11 TO 8/12/2022



GENERAL PRICE INDEX FROM 27/11 TO 8/12/2022

