

Daily Summary for Amman Stock Exchange

VALUE TRADED (JD)

	2022	2023	NET CHANGE	CHANGE (%)
Daily	8,114,039	5,412,446	-2,701,593	-33.30%
Cumulative (2/4-2/4)	8,114,039	5,412,446	-2,701,593	-33.30%
Cumulative (2/1-2/4)	395,062,080	539,550,743	144,488,663	36.57%

NO. OF SHARES TRADED

	2022	2023	NET CHANGE	CHANGE (%)
Daily	4,774,560	5,289,786	515,226	10.79%
Cumulative (2/4-2/4)	4,774,560	5,289,786	515,226	10.79%
Cumulative (2/1-2/4)	276,979,960	345,859,823	68,879,863	24.87%

NO. OF TRANSACTIONS

	2022	2023	NET CHANGE	CHANGE (%)
Daily	2,101	2,225	124	5.90%
Cumulative (2/4-2/4)	2,101	2,225	124	5.90%
Cumulative (2/1-2/4)	173,642	216,232	42,590	24.53%

SOME FINANCIAL RATIOS FOR THE ASE (2/4/2023)

SECTOR	P/E	P/BV	DIVIDEND YIELD (%)	TURNOVER (%)
FINANCIAL	10.536	0.822	5.550	0.097
SERVICES	10.225	1.450	5.091	0.043
INDUSTRY	5.241	1.932	5.989	0.104
OVERALL	7.177	1.147	5.885	0.087

STOCK PRICE INDEX WEIGHTED BY FREE FLOAT MARKET CAPITALIZATION (1999=1000)

	THURSDAY 30/03/2023	SUNDAY 02/04/2023	% CHANGE	
			DAY BEFORE	YTD
GENERAL	2601.2	2572.1	-1.12%	2.82%
FINANCIAL	2733.1	2687.7	-1.66%	-0.17%
SERVICES	1850.6	1849.9	-0.04%	6.27%
INDUSTRY	5670.3	5647.2	-0.41%	6.71%

STOCK PRICE INDEX WEIGHTED BY FREE FLOAT MARKET CAPITALIZATION ASE20 (2014=1000)

	1412.6	1394.1	-1.31%	3.63%
--	--------	--------	--------	-------

Total Return Index ASETR (2021=1074)

	1530.0	1523.8	-0.40%	6.55%
--	--------	--------	--------	-------

STOCK PRICE INDEX WEIGHTED BY MARKET CAPITALIZATION (1991=1000)

	THURSDAY 30/03/2023	SUNDAY 02/04/2023	% CHANGE	
			DAY BEFORE	YTD
GENERAL	4963.6	4893.5	-1.41%	3.45%
BANKS	6825.4	6665.7	-2.34%	-1.30%
INSURANCE	1325.2	1323.9	-0.10%	-0.58%
SERVICES	916.9	919.6	0.30%	7.92%
INDUSTRY	7487.2	7418.3	-0.92%	7.79%

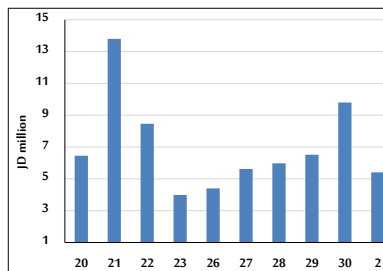
STOCK PRICE MARKET INDEX WEIGHTED BY FREE FLOAT MARKET CAP. (2012=1000)

	THURSDAY 30/03/2023	SUNDAY 02/04/2023	% CHANGE	
			DAY BEFORE	YTD
FIRST MARKET	1467.4	1449.3	-1.23%	2.89%
SECOND MARKET	784.2	786.7	0.31%	-0.23%

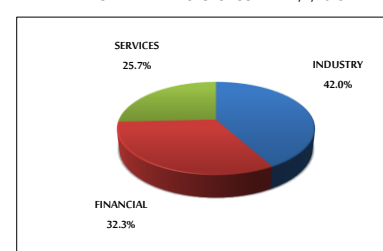
MARKET CAPITALIZATION (JD)

	18,816,623,614	18,569,018,789	-1.32%	3.14%
--	----------------	----------------	--------	-------

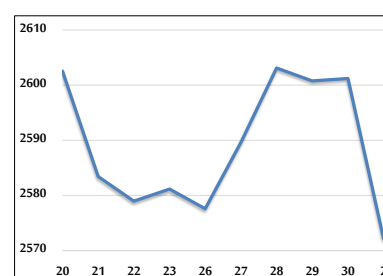
VALUE TRADED FROM 20/3 TO 2/4/2023



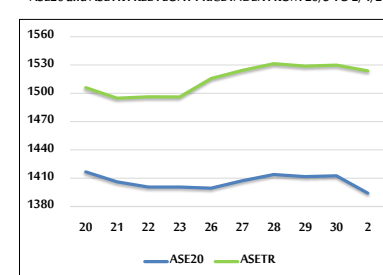
VALUE TRADED BY SECTOR SUNDAY 2/4/2023



GENERAL FREE FLOAT PRICE INDEX FROM 20/3 TO 2/4/2023



ASE20 and ASETR FREE FLOAT PRICE INDEX FROM 20/3 TO 2/4/2023



STOCK PRICE INDEX FROM 20/3 TO 2/4/2023

