

Daily Summary for Amman Stock Exchange

VALUE TRADED (JD)

	2022	2023	NET CHANGE	CHANGE (%)
Daily	4,375,200	4,475,889	100,689	2.30%
Cumulative (1/5-21/5)	165,125,636	82,746,853	-82,378,783	-49.89%
Cumulative (2/1-21/5)	728,571,839	728,261,914	-309,925	-0.04%

NO. OF SHARES TRADED

	2022	2023	NET CHANGE	CHANGE (%)
Daily	2,595,521	4,221,617	1,626,096	62.65%
Cumulative (1/5-21/5)	78,667,591	76,449,288	-2,218,303	-2.82%
Cumulative (2/1-21/5)	430,863,126	481,158,342	50,295,216	11.67%

NO. OF TRANSACTIONS

	2022	2023	NET CHANGE	CHANGE (%)
Daily	2,149	2,941	792	36.85%
Cumulative (1/5-21/5)	59,132	46,743	-12,389	-20.95%
Cumulative (2/1-21/5)	294,876	304,243	9,367	3.18%

SOME FINANCIAL RATIOS FOR THE ASE (21/5/2023)

SECTOR	P/E	P/BV	DIVIDEND YIELD (%)	TURNOVER (%)
FINANCIAL	9.802	0.802	5.745	0.041
SERVICES	9.822	1.348	6.518	0.056
INDUSTRY	5.207	1.814	6.387	0.272
OVERALL	6.962	1.092	6.344	0.069

STOCK PRICE INDEX WEIGHTED BY FREE FLOAT MARKET CAPITALIZATION (1999=1000)

	THURSDAY 18/05/2023	SUNDAY 21/05/2023	% CHANGE	
			DAY BEFORE	YTD
GENERAL	2490.2	2483.4	-0.27%	-0.73%
FINANCIAL	2661.9	2648.3	-0.51%	-1.63%
SERVICES	1746.1	1735.1	-0.63%	-0.33%
INDUSTRY	5282.3	5343.9	1.17%	0.98%

STOCK PRICE INDEX WEIGHTED BY FREE FLOAT MARKET CAPITALIZATION ASE20 (2014=1000)

	1342.6	1336.9	-0.43%	-0.63%
--	--------	--------	--------	--------

Total Return Index ASETR (2021=1074)

	1526.9	1520.4	-0.43%	6.31%
--	--------	--------	--------	-------

STOCK PRICE INDEX WEIGHTED BY MARKET CAPITALIZATION (1991=1000)

	THURSDAY 18/05/2023	SUNDAY 21/05/2023	% CHANGE	
			DAY BEFORE	YTD
GENERAL	4663.2	4665.0	0.04%	-1.38%
BANKS	6534.1	6483.4	-0.78%	-4.00%
INSURANCE	1317.2	1312.6	-0.35%	-1.43%
SERVICES	881.9	878.9	-0.34%	3.15%
INDUSTRY	6832.0	6907.7	1.11%	0.37%

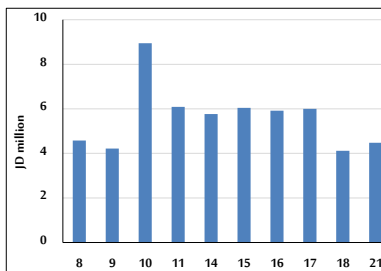
STOCK PRICE MARKET INDEX WEIGHTED BY FREE FLOAT MARKET CAP. (2012=1000)

	THURSDAY 18/05/2023	SUNDAY 21/05/2023	% CHANGE	
			DAY BEFORE	YTD
FIRST MARKET	1396.9	1391.7	-0.38%	-1.20%
SECOND MARKET	803.9	805.9	0.25%	2.20%

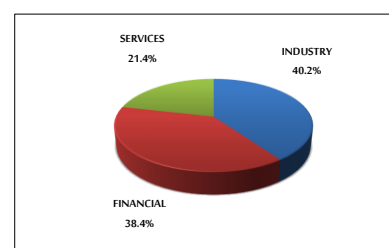
MARKET CAPITALIZATION (JD)

	17,726,274,598	17,734,227,916	0.04%	-1.50%
--	----------------	----------------	-------	--------

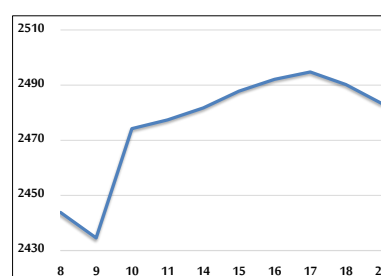
VALUE TRADED FROM 8/5 TO 21/5/2023



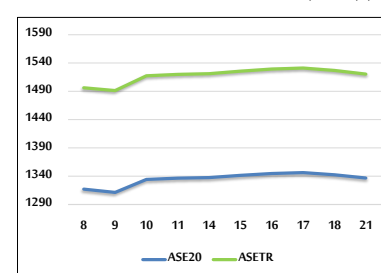
VALUE TRADED BY SECTOR SUNDAY 21/5/2023



GENERAL FREE FLOAT PRICE INDEX FROM 8/5 TO 21/5/2023



ASE20 and ASETR FREE FLOAT PRICE INDEX FROM 8/5 TO 21/5/2023



STOCK PRICE INDEX FROM 8/5 TO 21/5/2023

