

## Daily Summary for Amman Stock Exchange

### VALUE TRADED (JD)

	2022	2023	NET CHANGE	CHANGE (%)
Daily	-	4,159,877	-	-
Cumulative (1/5-24/5)	171,325,092	96,993,520	-74,331,572	-43.39%
Cumulative (2/1-24/5)	734,771,295	742,508,581	7,737,286	1.05%

### NO. OF SHARES TRADED

	2022	2023	NET CHANGE	CHANGE (%)
Daily	-	4,798,731	-	-
Cumulative (1/5-24/5)	82,775,302	89,999,857	7,224,555	8.73%
Cumulative (2/1-24/5)	434,970,837	494,708,911	59,738,074	13.73%

### NO. OF TRANSACTIONS

	2022	2023	NET CHANGE	CHANGE (%)
Daily	-	2,980	-	-
Cumulative (1/5-24/5)	61,725	56,030	-5,695	-9.23%
Cumulative (2/1-24/5)	297,469	313,530	16,061	5.40%

### SOME FINANCIAL RATIOS FOR THE ASE (24/5/2023)

SECTOR	P/E	P/BV	DIVIDEND YIELD (%)	TURNOVER (%)
FINANCIAL	9.780	0.800	5.758	0.048
SERVICES	9.788	1.344	6.540	0.088
INDUSTRY	5.212	1.816	6.381	0.258
OVERALL	6.954	1.090	6.352	0.079

### STOCK PRICE INDEX WEIGHTED BY FREE FLOAT MARKET CAPITALIZATION (1999=1000)

	TUESDAY 23/05/2023	WEDNESDAY 24/05/2023	% CHANGE	
			DAY BEFORE	YTD
GENERAL	2479.2	2483.9	0.19%	-0.71%
FINANCIAL	2651.4	2654.6	0.12%	-1.40%
SERVICES	1725.2	1729.7	0.26%	-0.64%
INDUSTRY	5319.8	5332.2	0.23%	0.75%

### STOCK PRICE INDEX WEIGHTED BY FREE FLOAT MARKET CAPITALIZATION ASE20 (2014=1000)

	1334.8	1338.7	0.29%	-0.49%
--	--------	--------	-------	--------

### Total Return Index ASETR (2021=1074)

	1518.0	1522.4	0.29%	6.45%
--	--------	--------	-------	-------

### STOCK PRICE INDEX WEIGHTED BY MARKET CAPITALIZATION (1991=1000)

	TUESDAY 23/05/2023	WEDNESDAY 24/05/2023	% CHANGE	
			DAY BEFORE	YTD
GENERAL	4642.1	4659.7	0.38%	-1.49%
BANKS	6461.1	6463.2	0.03%	-4.30%
INSURANCE	1312.4	1320.2	0.59%	-0.86%
SERVICES	876.6	879.6	0.34%	3.23%
INDUSTRY	6856.9	6909.4	0.76%	0.40%

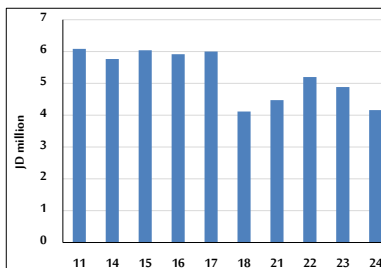
### STOCK PRICE MARKET INDEX WEIGHTED BY FREE FLOAT MARKET CAP. (2012=1000)

	TUESDAY 23/05/2023	WEDNESDAY 24/05/2023	% CHANGE	
			DAY BEFORE	YTD
FIRST MARKET	1388.0	1391.3	0.24%	-1.23%
SECOND MARKET	815.7	815.9	0.02%	3.47%

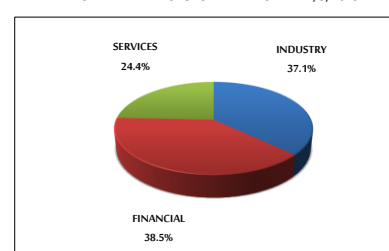
### MARKET CAPITALIZATION (JD)

	17,652,130,919	17,712,650,081	0.34%	-1.62%
--	----------------	----------------	-------	--------

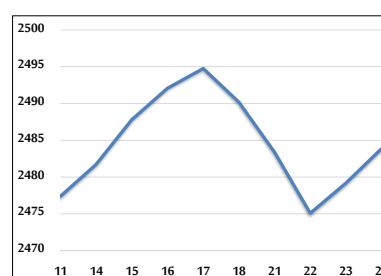
### VALUE TRADED FROM 11/5 TO 24/5/2023



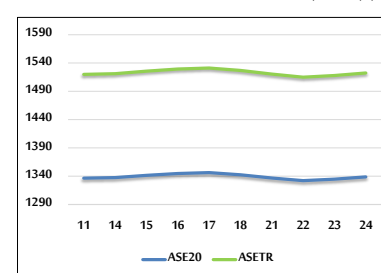
### VALUE TRADED BY SECTOR WEDNESDAY 24/5/2023



### GENERAL FREE FLOAT PRICE INDEX FROM 11/5 TO 24/5/2023



### ASE20 and ASETR FREE FLOAT PRICE INDEX FROM 11/5 TO 24/5/2023



### STOCK PRICE INDEX FROM 11/5 TO 24/5/2023

