

Daily Summary for Amman Stock Exchange

VALUE TRADED (JD)

	2022	2023	NET CHANGE	CHANGE (%)
Daily	-	4,513,211	-	-
Cumulative (1/5-30/5)	171,325,092	111,737,642	-59,587,450	-34.78%
Cumulative (2/1-30/5)	734,771,295	757,252,703	22,481,408	3.06%

NO. OF SHARES TRADED

	2022	2023	NET CHANGE	CHANGE (%)
Daily	-	3,531,635	-	-
Cumulative (1/5-30/5)	82,775,302	100,537,073	17,761,771	21.46%
Cumulative (2/1-30/5)	434,970,837	505,246,127	70,275,290	16.16%

NO. OF TRANSACTIONS

	2022	2023	NET CHANGE	CHANGE (%)
Daily	-	2,759	-	-
Cumulative (1/5-30/5)	61,725	64,205	2,480	4.02%
Cumulative (2/1-30/5)	297,469	321,705	24,236	8.15%

SOME FINANCIAL RATIOS FOR THE ASE (30/5/2023)

SECTOR	P/E	P/BV	DIVIDEND YIELD (%)	TURNOVER (%)
FINANCIAL	9.726	0.795	5.790	0.035
SERVICES	9.909	1.360	6.461	0.060
INDUSTRY	5.105	1.779	6.514	0.199
OVERALL	6.889	1.080	6.412	0.058

STOCK PRICE INDEX WEIGHTED BY FREE FLOAT MARKET CAPITALIZATION (1999=1000)

	MONDAY 29/05/2023	TUESDAY 30/05/2023	% CHANGE	
			DAY BEFORE	YTD
GENERAL	2465.0	2465.3	0.01%	-1.45%
FINANCIAL	2633.1	2636.1	0.11%	-2.09%
SERVICES	1731.4	1733.1	0.10%	-0.44%
INDUSTRY	5260.7	5238.7	-0.42%	-1.01%

STOCK PRICE INDEX WEIGHTED BY FREE FLOAT MARKET CAPITALIZATION ASE20 (2014=1000)

	1325.9	1325.3	-0.05%	-1.49%
--	--------	--------	--------	--------

Total Return Index ASETR (2021=1074)

	1507.9	1507.2	-0.05%	5.38%
--	--------	--------	--------	-------

STOCK PRICE INDEX WEIGHTED BY MARKET CAPITALIZATION (1991=1000)

	MONDAY 29/05/2023	TUESDAY 30/05/2023	% CHANGE	
			DAY BEFORE	YTD
GENERAL	4618.7	4615.9	-0.06%	-2.42%
BANKS	6417.6	6426.5	0.14%	-4.84%
INSURANCE	1317.9	1322.4	0.35%	-0.70%
SERVICES	889.9	893.1	0.36%	4.81%
INDUSTRY	6789.5	6761.2	-0.42%	-1.76%

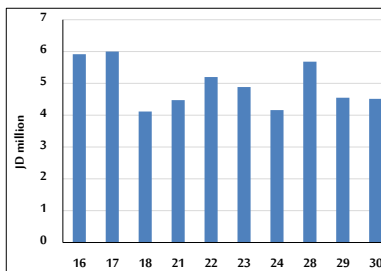
STOCK PRICE MARKET INDEX WEIGHTED BY FREE FLOAT MARKET CAP. (2012=1000)

	MONDAY 29/05/2023	TUESDAY 30/05/2023	% CHANGE	
			DAY BEFORE	YTD
FIRST MARKET	1379.5	1379.3	-0.01%	-2.08%
SECOND MARKET	816.5	817.3	0.09%	3.65%

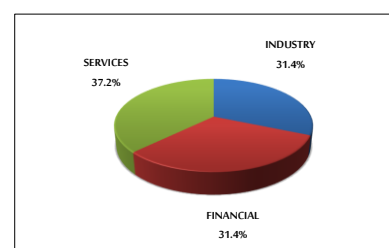
MARKET CAPITALIZATION (JD)

	17,570,646,065	17,562,116,249	-0.05%	-2.45%
--	----------------	----------------	--------	--------

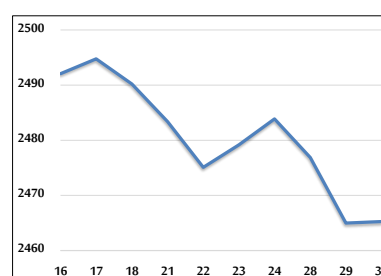
VALUE TRADED FROM 16/5 TO 30/5/2023



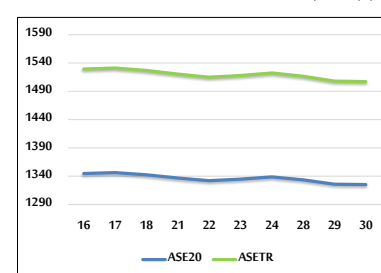
VALUE TRADED BY SECTOR TUESDAY 30/5/2023



GENERAL FREE FLOAT PRICE INDEX FROM 16/5 TO 30/5/2023



ASE20 and ASETR FREE FLOAT PRICE INDEX FROM 16/5 TO 30/5/2023



STOCK PRICE INDEX FROM 16/5 TO 30/5/2023

