

Daily Summary for Amman Stock Exchange

VALUE TRADED (JD)

	2022	2023	NET CHANGE	CHANGE (%)
Daily	6,768,538	2,954,472	-3,814,066	-56.35%
Cumulative (2/7-11/7)	89,541,679	43,861,973	-45,679,706	-51.02%
Cumulative (2/1-11/7)	1,059,922,337	907,182,692	-152,739,645	-14.41%

NO. OF SHARES TRADED

	2022	2023	NET CHANGE	CHANGE (%)
Daily	4,290,976	2,224,287	-2,066,689	-48.16%
Cumulative (2/7-11/7)	46,823,439	28,622,835	-18,200,604	-38.87%
Cumulative (2/1-11/7)	629,597,672	622,133,917	-7,463,755	-1.19%

NO. OF TRANSACTIONS

	2022	2023	NET CHANGE	CHANGE (%)
Daily	3,817	1,759	-2,058	-53.92%
Cumulative (2/7-11/7)	35,889	21,000	-14,889	-41.49%
Cumulative (2/1-11/7)	411,523	396,915	-14,608	-3.55%

SOME FINANCIAL RATIOS FOR THE ASE (11/7/2023)

SECTOR	P/E	P/BV	DIVIDEND YIELD (%)	TURNOVER (%)
FINANCIAL	9.720	0.795	5.790	0.039
SERVICES	10.098	1.386	6.336	0.030
INDUSTRY	4.552	1.586	7.306	0.027
OVERALL	6.609	1.035	6.691	0.035

STOCK PRICE INDEX WEIGHTED BY FREE FLOAT MARKET CAPITALIZATION (1999=1000)

	MONDAY 10/07/2023	TUESDAY 11/07/2023	% CHANGE	
			DAY BEFORE	YTD
GENERAL	2439.6	2444.9	0.22%	-2.27%
FINANCIAL	2618.4	2626.5	0.31%	-2.44%
SERVICES	1809.5	1805.2	-0.24%	3.70%
INDUSTRY	4778.1	4803.5	0.53%	-9.24%

STOCK PRICE INDEX WEIGHTED BY FREE FLOAT MARKET CAPITALIZATION ASE20 (2014=1000)

	1306.5	1309.7	0.25%	-2.65%
--	--------	--------	-------	--------

Total Return Index ASETR (2021=1074)

	1485.8	1489.5	0.25%	4.15%
--	--------	--------	-------	-------

STOCK PRICE INDEX WEIGHTED BY MARKET CAPITALIZATION (1991=1000)

	MONDAY 10/07/2023	TUESDAY 11/07/2023	% CHANGE	
			DAY BEFORE	YTD
GENERAL	4412.9	4428.7	0.36%	-6.38%
BANKS	6399.7	6423.9	0.38%	-4.88%
INSURANCE	1285.1	1287.6	0.19%	-3.31%
SERVICES	902.5	902.8	0.02%	5.95%
INDUSTRY	6040.7	6066.1	0.42%	-11.86%

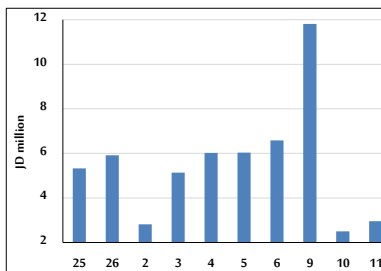
STOCK PRICE MARKET INDEX WEIGHTED BY FREE FLOAT MARKET CAP. (2012=1000)

	MONDAY 10/07/2023	TUESDAY 11/07/2023	% CHANGE	
			DAY BEFORE	YTD
FIRST MARKET	1359.6	1362.8	0.23%	-3.25%
SECOND MARKET	848.1	848.5	0.04%	7.61%

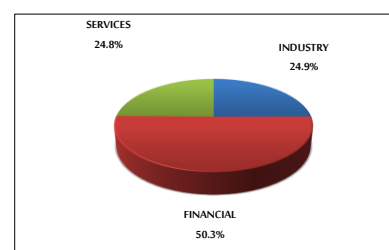
MARKET CAPITALIZATION (JD)

	16,855,004,485	16,910,825,254	0.33%	-6.07%
--	----------------	----------------	-------	--------

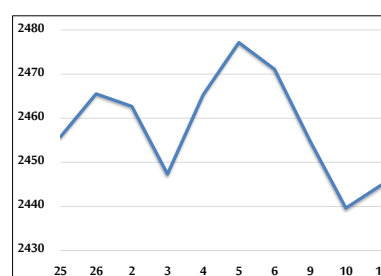
VALUE TRADED FROM 25/6 TO 11/7/2023



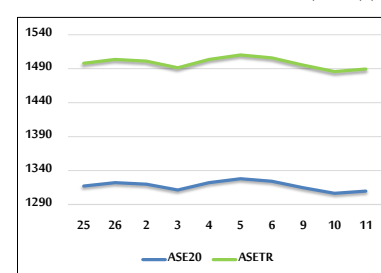
VALUE TRADED BY SECTOR TUESDAY 11/7/2023



GENERAL FREE FLOAT PRICE INDEX FROM 25/6 TO 11/7/2023



ASE20 and ASETR FREE FLOAT PRICE INDEX FROM 25/6 TO 11/7/2023



STOCK PRICE INDEX FROM 25/6 TO 11/7/2023

