

Daily Summary for Amman Stock Exchange

VALUE TRADED (JD)

	2022	2023	NET CHANGE	CHANGE (%)
Daily	18,568,766	5,313,754	-13,255,012	-71.38%
Cumulative (1/8-1/8)	18,568,766	5,313,754	-13,255,012	-71.38%
Cumulative (2/1-1/8)	1,170,306,693	991,194,341	-179,112,352	-15.30%

NO. OF SHARES TRADED

	2022	2023	NET CHANGE	CHANGE (%)
Daily	9,064,503	3,765,684	-5,298,819	-58.46%
Cumulative (1/8-1/8)	9,064,503	3,765,684	-5,298,819	-58.46%
Cumulative (2/1-1/8)	686,980,009	673,966,603	-13,013,406	-1.89%

NO. OF TRANSACTIONS

	2022	2023	NET CHANGE	CHANGE (%)
Daily	5,080	2,624	-2,456	-48.35%
Cumulative (1/8-1/8)	5,080	2,624	-2,456	-48.35%
Cumulative (2/1-1/8)	458,672	433,121	-25,551	-5.57%

SOME FINANCIAL RATIOS FOR THE ASE (1/8/2023)

SECTOR	P/E	P/BV	DIVIDEND YIELD (%)	TURNOVER (%)
FINANCIAL	8.780	0.795	5.776	0.060
SERVICES	12.232	1.348	6.518	0.060
INDUSTRY	5.605	1.644	7.048	0.060
OVERALL	7.146	1.046	6.618	0.060

STOCK PRICE INDEX WEIGHTED BY FREE FLOAT MARKET CAPITALIZATION (1999=1000)

	MONDAY 31/07/2023	TUESDAY 01/08/2023	% CHANGE	
			DAY BEFORE	YTD
GENERAL	2445.9	2438.3	-0.31%	-2.53%
FINANCIAL	2632.8	2635.2	0.09%	-2.12%
SERVICES	1732.9	1730.5	-0.14%	-0.59%
INDUSTRY	5015.8	4924.5	-1.82%	-6.95%

STOCK PRICE INDEX WEIGHTED BY FREE FLOAT MARKET CAPITALIZATION ASE20 (2014=1000)

	1312.5	1307.9	-0.35%	-2.78%
--	--------	--------	--------	--------

Total Return Index ASETR (2021=1074)

	1492.7	1487.5	-0.35%	4.01%
--	--------	--------	--------	-------

STOCK PRICE INDEX WEIGHTED BY MARKET CAPITALIZATION (1991=1000)

	MONDAY 31/07/2023	TUESDAY 01/08/2023	% CHANGE	
			DAY BEFORE	YTD
GENERAL	4521.0	4478.2	-0.95%	-5.33%
BANKS	6435.3	6440.2	0.08%	-4.64%
INSURANCE	1269.5	1265.8	-0.30%	-4.95%
SERVICES	890.6	890.9	0.03%	4.56%
INDUSTRY	6415.1	6255.3	-2.49%	-9.11%

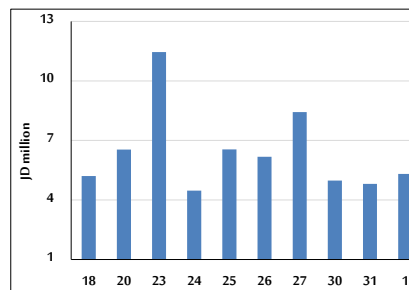
STOCK PRICE MARKET INDEX WEIGHTED BY FREE FLOAT MARKET CAP. (2012=1000)

	MONDAY 31/07/2023	TUESDAY 01/08/2023	% CHANGE	
			DAY BEFORE	YTD
FIRST MARKET	1365.3	1360.7	-0.34%	-3.40%
SECOND MARKET	840.1	840.0	-0.02%	6.52%

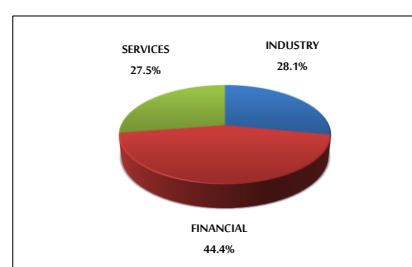
MARKET CAPITALIZATION (JD)

	17,204,563,007	17,054,016,865	-0.88%	-5.28%
--	----------------	----------------	--------	--------

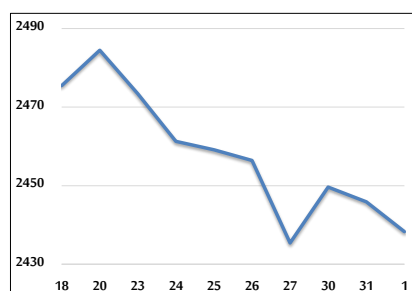
VALUE TRADED FROM 18/7 TO 1/8/2023



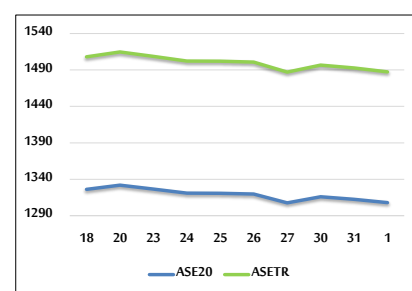
VALUE TRADED BY SECTOR TUESDAY 1/8/2023



GENERAL FREE FLOAT PRICE INDEX FROM 18/7 TO 1/8/2023



ASE20 and ASETR FREE FLOAT PRICE INDEX FROM 18/7 TO 1/8/2023



STOCK PRICE INDEX FROM 18/7 TO 1/8/2023

