

Daily Summary for Amman Stock Exchange

VALUE TRADED (JD)

	2022	2023	NET CHANGE	CHANGE (%)
Daily	9,742,043	4,508,373	-5,233,670	-53.72%
Cumulative (1/8-6/8)	57,258,724	16,026,998	-41,231,726	-72.01%
Cumulative (2/1-6/8)	1,208,996,651	1,001,907,585	-207,089,066	-17.13%

NO. OF SHARES TRADED

	2022	2023	NET CHANGE	CHANGE (%)
Daily	4,624,802	3,454,236	-1,170,566	-25.31%
Cumulative (1/8-6/8)	26,646,182	11,338,303	-15,307,879	-57.45%
Cumulative (2/1-6/8)	704,561,688	681,539,222	-23,022,466	-3.27%

NO. OF TRANSACTIONS

	2022	2023	NET CHANGE	CHANGE (%)
Daily	4,327	2,484	-1,843	-42.59%
Cumulative (1/8-6/8)	20,687	8,926	-11,761	-56.85%
Cumulative (2/1-6/8)	474,279	439,423	-34,856	-7.35%

SOME FINANCIAL RATIOS FOR THE ASE (6/8/2023)

SECTOR	P/E	P/BV	DIVIDEND YIELD (%)	TURNOVER (%)
FINANCIAL	8.730	0.791	5.809	0.040
SERVICES	12.204	1.345	6.532	0.113
INDUSTRY	5.780	1.696	6.834	0.045
OVERALL	7.208	1.056	6.561	0.055

STOCK PRICE INDEX WEIGHTED BY FREE FLOAT MARKET CAPITALIZATION (1999=1000)

	THURSDAY 03/08/2023	SUNDAY 06/08/2023	% CHANGE	
			DAY BEFORE	YTD
GENERAL	2437.0	2443.0	0.24%	-2.34%
FINANCIAL	2627.9	2623.5	-0.17%	-2.55%
SERVICES	1722.3	1724.2	0.11%	-0.96%
INDUSTRY	4990.9	5083.5	1.85%	-3.95%

STOCK PRICE INDEX WEIGHTED BY FREE FLOAT MARKET CAPITALIZATION ASE20 (2014=1000)

	1306.6	1309.5	0.22%	-2.66%
--	--------	--------	-------	--------

Total Return Index ASETR (2021=1074)

	1485.9	1489.2	0.22%	4.13%
--	--------	--------	-------	-------

STOCK PRICE INDEX WEIGHTED BY MARKET CAPITALIZATION (1991=1000)

	THURSDAY 03/08/2023	SUNDAY 06/08/2023	% CHANGE	
			DAY BEFORE	YTD
GENERAL	4486.1	4517.6	0.70%	-4.50%
BANKS	6408.1	6394.1	-0.22%	-5.32%
INSURANCE	1269.9	1268.9	-0.08%	-4.71%
SERVICES	890.6	895.3	0.53%	5.08%
INDUSTRY	6322.6	6442.4	1.89%	-6.39%

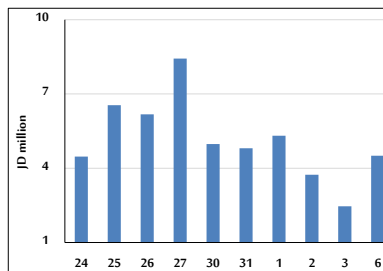
STOCK PRICE MARKET INDEX WEIGHTED BY FREE FLOAT MARKET CAP. (2012=1000)

	THURSDAY 03/08/2023	SUNDAY 06/08/2023	% CHANGE	
			DAY BEFORE	YTD
FIRST MARKET	1359.5	1362.7	0.24%	-3.26%
SECOND MARKET	842.2	843.2	0.12%	6.94%

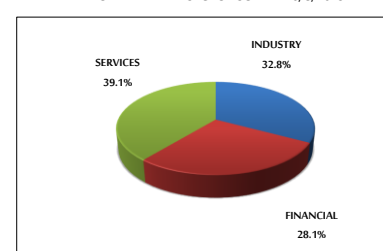
MARKET CAPITALIZATION (JD)

	17,074,419,880	17,190,753,867	0.68%	-4.52%
--	----------------	----------------	-------	--------

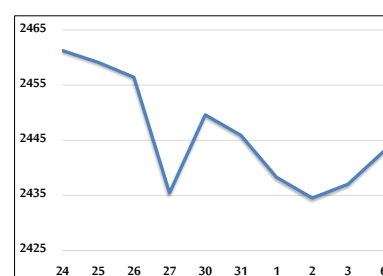
VALUE TRADED FROM 24/7 TO 6/8/2023



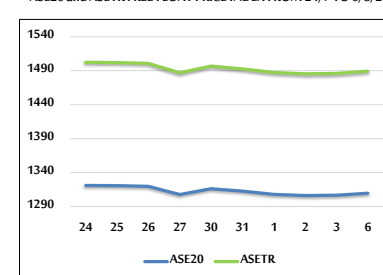
VALUE TRADED BY SECTOR SUNDAY 6/8/2023



GENERAL FREE FLOAT PRICE INDEX FROM 24/7 TO 6/8/2023



ASE20 and ASETR FREE FLOAT PRICE INDEX FROM 24/7 TO 6/8/2023



STOCK PRICE INDEX FROM 24/7 TO 6/8/2023

