

Daily Summary for Amman Stock Exchange

VALUE TRADED (JD)

	2022	2023	NET CHANGE	CHANGE (%)
Daily	5,840,863	7,311,179	1,470,316	25.17%
Cumulative (1/8-7/8)	63,099,587	23,338,177	-39,761,410	-63.01%
Cumulative (2/1-7/8)	1,214,837,514	1,009,218,764	-205,618,750	-16.93%

NO. OF SHARES TRADED

	2022	2023	NET CHANGE	CHANGE (%)
Daily	4,129,282	5,713,781	1,584,499	38.37%
Cumulative (1/8-7/8)	30,775,464	17,052,084	-13,723,380	-44.59%
Cumulative (2/1-7/8)	708,690,970	687,253,003	-21,437,967	-3.03%

NO. OF TRANSACTIONS

	2022	2023	NET CHANGE	CHANGE (%)
Daily	3,362	2,079	-1,283	-38.16%
Cumulative (1/8-7/8)	24,049	11,005	-13,044	-54.24%
Cumulative (2/1-7/8)	477,641	441,502	-36,139	-7.57%

SOME FINANCIAL RATIOS FOR THE ASE (7/8/2023)

SECTOR	P/E	P/BV	DIVIDEND YIELD (%)	TURNOVER (%)
FINANCIAL	8.748	0.792	5.800	0.100
SERVICES	12.220	1.346	6.524	0.094
INDUSTRY	5.770	1.692	6.848	0.041
OVERALL	7.214	1.056	6.557	0.091

STOCK PRICE INDEX WEIGHTED BY FREE FLOAT MARKET CAPITALIZATION (1999=1000)

	SUNDAY 06/08/2023	MONDAY 07/08/2023	% CHANGE	
			DAY BEFORE	YTD
GENERAL	2443.0	2444.4	0.06%	-2.29%
FINANCIAL	2623.5	2620.7	-0.11%	-2.66%
SERVICES	1724.2	1732.1	0.46%	-0.50%
INDUSTRY	5083.5	5077.7	-0.11%	-4.05%

STOCK PRICE INDEX WEIGHTED BY FREE FLOAT MARKET CAPITALIZATION ASE20 (2014=1000)

	1309.5	1310.1	0.05%	-2.61%
--	--------	--------	-------	--------

Total Return Index ASETR (2021=1074)

	1489.2	1490.0	0.05%	4.18%
--	--------	--------	-------	-------

STOCK PRICE INDEX WEIGHTED BY MARKET CAPITALIZATION (1991=1000)

	SUNDAY 06/08/2023	MONDAY 07/08/2023	% CHANGE	
			DAY BEFORE	YTD
GENERAL	4517.6	4519.8	0.05%	-4.45%
BANKS	6394.1	6406.9	0.20%	-5.13%
INSURANCE	1268.9	1268.9	0.00%	-4.71%
SERVICES	895.3	893.1	-0.25%	4.81%
INDUSTRY	6442.4	6440.3	-0.03%	-6.42%

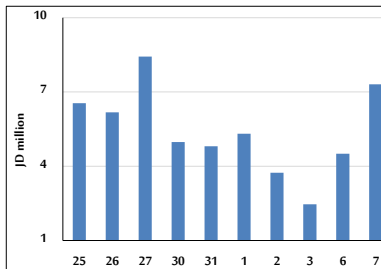
STOCK PRICE MARKET INDEX WEIGHTED BY FREE FLOAT MARKET CAP. (2012=1000)

	SUNDAY 06/08/2023	MONDAY 07/08/2023	% CHANGE	
			DAY BEFORE	YTD
FIRST MARKET	1362.7	1363.3	0.04%	-3.22%
SECOND MARKET	843.2	841.9	-0.16%	6.76%

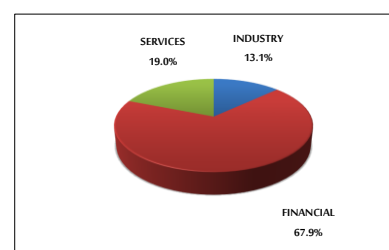
MARKET CAPITALIZATION (JD)

	17,190,753,867	17,194,529,728	0.02%	-4.49%
--	----------------	----------------	-------	--------

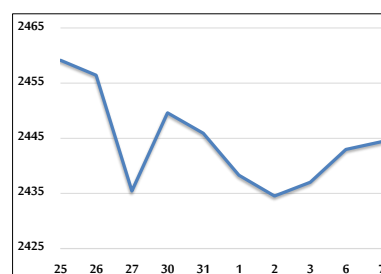
VALUE TRADED FROM 25/7 TO 7/8/2023



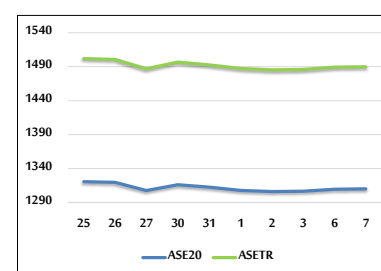
VALUE TRADED BY SECTOR MONDAY 7/8/2023



GENERAL FREE FLOAT PRICE INDEX FROM 25/7 TO 7/8/2023



ASE20 and ASETR FREE FLOAT PRICE INDEX FROM 25/7 TO 7/8/2023



STOCK PRICE INDEX FROM 25/7 TO 7/8/2023

