

Daily Summary for Amman Stock Exchange

VALUE TRADED (JD)

	2022	2023	NET CHANGE	CHANGE (%)
Daily	3,106,419	4,715,896	1,609,477	51.81%
Cumulative (1/9-12/9)	37,975,913	34,818,289	-3,157,624	-8.31%
Cumulative (2/1-12/9)	1,484,280,864	1,126,596,957	-357,683,907	-24.10%

NO. OF SHARES TRADED

	2022	2023	NET CHANGE	CHANGE (%)
Daily	2,070,446	6,135,817	4,065,371	196.35%
Cumulative (1/9-12/9)	24,429,474	42,587,761	18,158,287	74.33%
Cumulative (2/1-12/9)	836,557,697	788,211,077	-48,346,620	-5.78%

NO. OF TRANSACTIONS

	2022	2023	NET CHANGE	CHANGE (%)
Daily	1,753	3,345	1,592	90.82%
Cumulative (1/9-12/9)	19,294	24,533	5,239	27.15%
Cumulative (2/1-12/9)	549,237	503,574	-45,663	-8.31%

SOME FINANCIAL RATIOS FOR THE ASE (12/9/2023)

SECTOR	P/E	P/BV	DIVIDEND YIELD (%)	TURNOVER (%)
FINANCIAL	8.612	0.782	5.901	0.088
SERVICES	12.099	1.333	6.589	0.116
INDUSTRY	5.464	1.602	7.232	0.120
OVERALL	6.990	1.026	6.772	0.098

STOCK PRICE INDEX WEIGHTED BY FREE FLOAT MARKET CAPITALIZATION (1999=1000)

	MONDAY 11/09/2023	TUESDAY 12/09/2023	% CHANGE	
			DAY BEFORE	YTD
GENERAL	2411.2	2399.0	-0.50%	-4.10%
FINANCIAL	2607.8	2602.5	-0.20%	-3.33%
SERVICES	1718.5	1701.6	-0.98%	-2.26%
INDUSTRY	4861.9	4828.2	-0.69%	-8.77%

STOCK PRICE INDEX WEIGHTED BY FREE FLOAT MARKET CAPITALIZATION ASE20 (2014=1000)

	1291.9	1284.9	-0.54%	-4.49%
--	--------	--------	--------	--------

Total Return Index ASETR (2021=1074)

	1469.2	1461.3	-0.54%	2.18%
--	--------	--------	--------	-------

STOCK PRICE INDEX WEIGHTED BY MARKET CAPITALIZATION (1991=1000)

	MONDAY 11/09/2023	TUESDAY 12/09/2023	% CHANGE	
			DAY BEFORE	YTD
GENERAL	4425.8	4400.9	-0.56%	-6.97%
BANKS	6359.2	6361.9	0.04%	-5.80%
INSURANCE	1246.4	1239.2	-0.57%	-6.94%
SERVICES	892.3	886.5	-0.65%	4.04%
INDUSTRY	6160.1	6081.0	-1.28%	-11.64%

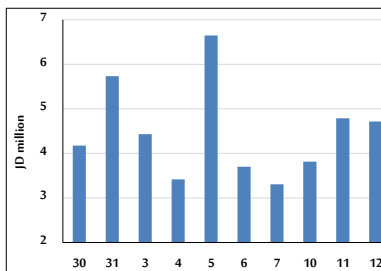
STOCK PRICE MARKET INDEX WEIGHTED BY FREE FLOAT MARKET CAP. (2012=1000)

	MONDAY 11/09/2023	TUESDAY 12/09/2023	% CHANGE	
			DAY BEFORE	YTD
FIRST MARKET	1341.9	1335.3	-0.49%	-5.20%
SECOND MARKET	862.2	857.5	-0.55%	8.75%

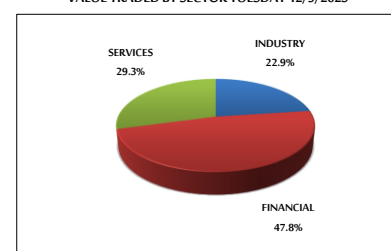
MARKET CAPITALIZATION (JD)

	16,874,554,477	16,793,672,908	-0.48%	-6.72%
--	----------------	----------------	--------	--------

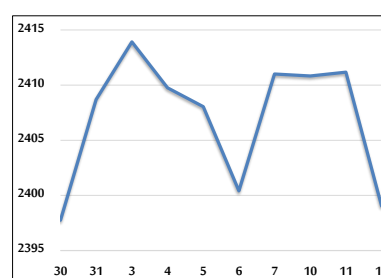
VALUE TRADED FROM 30/8 TO 12/9/2023



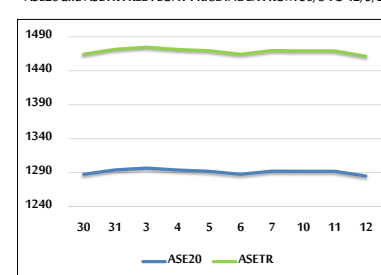
VALUE TRADED BY SECTOR TUESDAY 12/9/2023



GENERAL FREE FLOAT PRICE INDEX FROM 30/8 TO 12/9/2023



ASE20 and ASETR FREE FLOAT PRICE INDEX FROM 30/8 TO 12/9/2023



STOCK PRICE INDEX FROM 30/8 TO 12/9/2023

