

Daily Summary for Amman Stock Exchange

VALUE TRADED (JD)

	2022	2023	NET CHANGE	CHANGE (%)
Daily	4,377,029	3,433,320	-943,709	-21.56%
Cumulative (1/9-14/9)	47,665,322	41,627,681	-6,037,641	-12.67%
Cumulative (2/1-14/9)	1,493,970,273	1,133,406,349	-360,563,924	-24.13%

NO. OF SHARES TRADED

	2022	2023	NET CHANGE	CHANGE (%)
Daily	2,891,948	5,244,836	2,352,888	81.36%
Cumulative (1/9-14/9)	31,022,213	53,205,677	22,183,464	71.51%
Cumulative (2/1-14/9)	843,150,436	798,828,993	-44,321,443	-5.26%

NO. OF TRANSACTIONS

	2022	2023	NET CHANGE	CHANGE (%)
Daily	2,357	2,685	328	13.92%
Cumulative (1/9-14/9)	23,869	29,814	5,945	24.91%
Cumulative (2/1-14/9)	553,812	508,855	-44,957	-8.12%

SOME FINANCIAL RATIOS FOR THE ASE (14/9/2023)

SECTOR	P/E	P/BV	DIVIDEND YIELD (%)	TURNOVER (%)
FINANCIAL	8.633	0.784	5.886	0.098
SERVICES	12.122	1.336	6.577	0.055
INDUSTRY	5.459	1.601	7.238	0.057
OVERALL	6.998	1.027	6.765	0.084

STOCK PRICE INDEX WEIGHTED BY FREE FLOAT MARKET CAPITALIZATION (1999=1000)

	WEDNESDAY 13/09/2023	THURSDAY 14/09/2023	% CHANGE	
			DAY BEFORE	YTD
GENERAL	2404.6	2407.1	0.10%	-3.78%
FINANCIAL	2608.1	2611.5	0.13%	-3.00%
SERVICES	1708.0	1708.9	0.06%	-1.83%
INDUSTRY	4827.9	4829.1	0.02%	-8.75%

STOCK PRICE INDEX WEIGHTED BY FREE FLOAT MARKET CAPITALIZATION ASE20 (2014=1000)

	1288.1	1289.9	0.14%	-4.12%
--	--------	--------	-------	--------

Total Return Index ASETR (2021=1074)

	1464.8	1466.9	0.14%	2.57%
--	--------	--------	-------	-------

STOCK PRICE INDEX WEIGHTED BY MARKET CAPITALIZATION (1991=1000)

	WEDNESDAY 13/09/2023	THURSDAY 14/09/2023	% CHANGE	
			DAY BEFORE	YTD
GENERAL	4404.1	4405.9	0.04%	-6.86%
BANKS	6372.5	6378.5	0.09%	-5.56%
INSURANCE	1236.3	1235.1	-0.09%	-7.25%
SERVICES	887.0	887.8	0.09%	4.19%
INDUSTRY	6079.2	6076.8	-0.04%	-11.70%

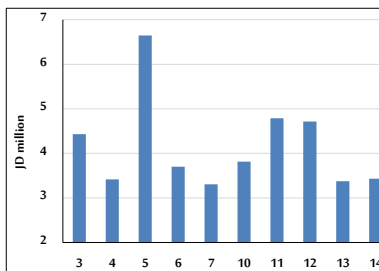
STOCK PRICE MARKET INDEX WEIGHTED BY FREE FLOAT MARKET CAP. (2012=1000)

	WEDNESDAY 13/09/2023	THURSDAY 14/09/2023	% CHANGE	
			DAY BEFORE	YTD
FIRST MARKET	1338.8	1340.2	0.11%	-4.85%
SECOND MARKET	857.4	858.7	0.16%	8.90%

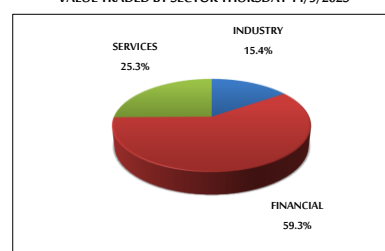
MARKET CAPITALIZATION (JD)

	16,804,595,296	16,813,001,971	0.05%	-6.61%
--	----------------	----------------	-------	--------

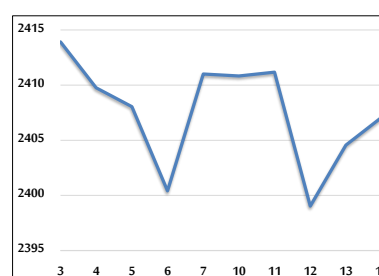
VALUE TRADED FROM 3/9 TO 14/9/2023



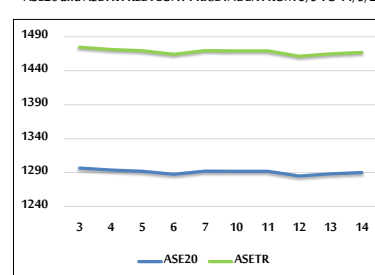
VALUE TRADED BY SECTOR THURSDAY 14/9/2023



GENERAL FREE FLOAT PRICE INDEX FROM 3/9 TO 14/9/2023



ASE20 and ASETR FREE FLOAT PRICE INDEX FROM 3/9 TO 14/9/2023



STOCK PRICE INDEX FROM 3/9 TO 14/9/2023

