

Daily Summary for Amman Stock Exchange

VALUE TRADED (JD)

	2022	2023	NET CHANGE	CHANGE (%)
Daily	3,217,184	2,929,850	-287,334	-8.93%
Cumulative (1/11-20/11)	78,182,932	44,719,238	-33,463,694	-42.80%
Cumulative (2/1-20/11)	1,771,485,513	1,322,495,067	-448,990,446	-25.35%

NO. OF SHARES TRADED

	2022	2023	NET CHANGE	CHANGE (%)
Daily	2,443,483	4,798,766	2,355,283	96.39%
Cumulative (1/11-20/11)	63,684,166	40,656,938	-23,027,228	-36.16%
Cumulative (2/1-20/11)	1,039,094,630	984,121,596	-54,973,034	-5.29%

NO. OF TRANSACTIONS

	2022	2023	NET CHANGE	CHANGE (%)
Daily	1,796	2,556	760	42.32%
Cumulative (1/11-20/11)	30,594	28,385	-2,209	-7.22%
Cumulative (2/1-20/11)	670,123	614,438	-55,685	-8.31%

SOME FINANCIAL RATIOS FOR THE ASE (20/11/2023)

SECTOR	P/E	P/BV	DIVIDEND YIELD (%)	TURNOVER (%)
FINANCIAL	7.793	0.803	5.729	0.095
SERVICES	11.442	1.301	6.754	0.038
INDUSTRY	6.724	1.521	7.617	0.041
OVERALL	7.305	1.006	6.790	0.076

STOCK PRICE INDEX WEIGHTED BY FREE FLOAT MARKET CAPITALIZATION (1999=1000)

	SUNDAY 19/11/2023	MONDAY 20/11/2023	% CHANGE	
			DAY BEFORE	YTD
GENERAL	2393.8	2390.4	-0.14%	-4.44%
FINANCIAL	2659.5	2658.3	-0.04%	-1.26%
SERVICES	1646.3	1637.9	-0.51%	-5.91%
INDUSTRY	4673.5	4683.6	0.22%	-11.50%

STOCK PRICE INDEX WEIGHTED BY FREE FLOAT MARKET CAPITALIZATION ASE20 (2014=1000)

	2022	2023	NET CHANGE	CHANGE (%)
	1287.5	1286.7	-0.06%	-4.36%

Total Return Index ASETR (2021=1074)

	2022	2023	NET CHANGE	CHANGE (%)
	1464.2	1463.3	-0.06%	2.32%

STOCK PRICE INDEX WEIGHTED BY MARKET CAPITALIZATION (1991=1000)

	SUNDAY 19/11/2023	MONDAY 20/11/2023	% CHANGE	
			DAY BEFORE	YTD
GENERAL	4351.6	4348.0	-0.08%	-8.08%
BANKS	6549.5	6543.5	-0.09%	-3.11%
INSURANCE	1258.7	1257.4	-0.10%	-5.57%
SERVICES	862.9	863.2	0.03%	1.30%
INDUSTRY	5731.6	5725.9	-0.10%	-16.80%

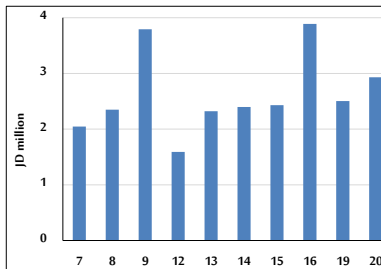
STOCK PRICE MARKET INDEX WEIGHTED BY FREE FLOAT MARKET CAP. (2012=1000)

	SUNDAY 19/11/2023	MONDAY 20/11/2023	% CHANGE	
			DAY BEFORE	YTD
FIRST MARKET	1336.6	1336.0	-0.05%	-5.15%
SECOND MARKET	842.2	835.8	-0.76%	5.99%

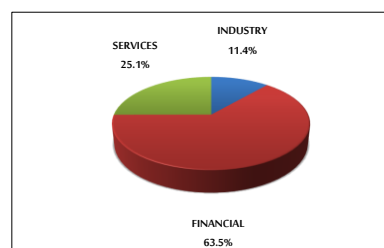
MARKET CAPITALIZATION (JD)

	2022	2023	NET CHANGE	CHANGE (%)
	16,692,381,405	16,681,626,889	-0.06%	-7.34%

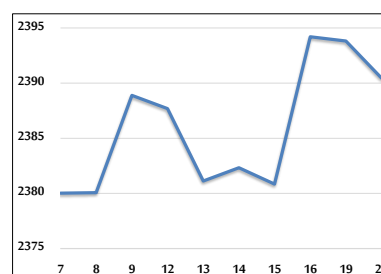
VALUE TRADED FROM 7/11 TO 20/11/2023



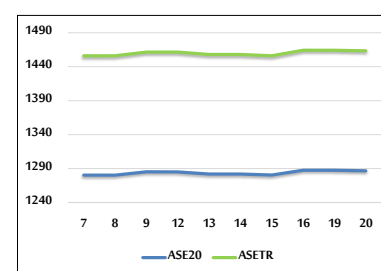
VALUE TRADED BY SECTOR MONDAY 20/11/2023



GENERAL FREE FLOAT PRICE INDEX FROM 7/11 TO 20/11/2023



ASE20 and ASETR FREE FLOAT PRICE INDEX FROM 7/11 TO 20/11/2023



STOCK PRICE INDEX FROM 7/11 TO 20/11/2023

