

## Daily Summary for Amman Stock Exchange

### VALUE TRADED (JD)

	2022	2023	NET CHANGE	CHANGE ( % )
Daily	2,741,428	4,679,815	1,938,387	70.71%
Cumulative (1/11-22/11)	83,560,649	54,303,699	-29,256,950	-35.01%
Cumulative (2/1-22/11)	1,776,863,230	1,332,079,528	-444,783,702	-25.03%

### NO. OF SHARES TRADED

	2022	2023	NET CHANGE	CHANGE ( % )
Daily	3,045,396	6,143,263	3,097,867	101.72%
Cumulative (1/11-22/11)	69,572,194	53,660,783	-15,911,411	-22.87%
Cumulative (2/1-22/11)	1,044,982,658	997,125,441	-47,857,217	-4.58%

### NO. OF TRANSACTIONS

	2022	2023	NET CHANGE	CHANGE ( % )
Daily	2,388	2,659	271	11.35%
Cumulative (1/11-22/11)	35,270	33,762	-1,508	-4.28%
Cumulative (2/1-22/11)	674,799	619,815	-54,984	-8.15%

### SOME FINANCIAL RATIOS FOR THE ASE (22/11/2023)

SECTOR	P/E	P/BV	DIVIDEND YIELD (%)	TURNOVER (%)
FINANCIAL	7.780	0.802	5.739	0.099
SERVICES	11.455	1.303	6.746	0.125
INDUSTRY	6.777	1.533	7.557	0.051
OVERALL	7.318	1.008	6.778	0.098

### STOCK PRICE INDEX WEIGHTED BY FREE FLOAT MARKET CAPITALIZATION (1999=1000)

	TUESDAY 21/11/2023	WEDNESDAY 22/11/2023	% CHANGE	
			DAY BEFORE	YTD
GENERAL	2393.8	2393.7	0.00%	-4.31%
FINANCIAL	2659.7	2658.7	-0.04%	-1.24%
SERVICES	1643.4	1642.3	-0.07%	-5.66%
INDUSTRY	4697.7	4715.6	0.38%	-10.90%

### STOCK PRICE INDEX WEIGHTED BY FREE FLOAT MARKET CAPITALIZATION ASE20 (2014=1000)

	1288.0	1287.4	-0.05%	-4.30%
--	--------	--------	--------	--------

### Total Return Index ASETR (2021=1074)

	1464.8	1464.1	-0.05%	2.38%
--	--------	--------	--------	-------

### STOCK PRICE INDEX WEIGHTED BY MARKET CAPITALIZATION (1991=1000)

	TUESDAY 21/11/2023	WEDNESDAY 22/11/2023	% CHANGE	
			DAY BEFORE	YTD
GENERAL	4354.3	4355.7	0.03%	-7.92%
BANKS	6536.1	6524.6	-0.18%	-3.39%
INSURANCE	1261.2	1272.8	0.92%	-4.42%
SERVICES	864.2	864.9	0.07%	1.50%
INDUSTRY	5754.6	5771.5	0.29%	-16.14%

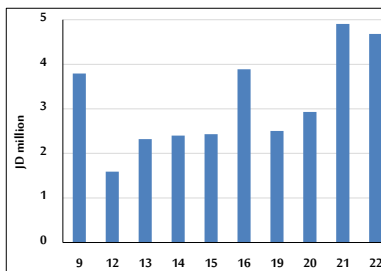
### STOCK PRICE MARKET INDEX WEIGHTED BY FREE FLOAT MARKET CAP. (2012=1000)

	TUESDAY 21/11/2023	WEDNESDAY 22/11/2023	% CHANGE	
			DAY BEFORE	YTD
FIRST MARKET	1337.2	1336.8	-0.03%	-5.09%
SECOND MARKET	841.1	844.3	0.37%	7.07%

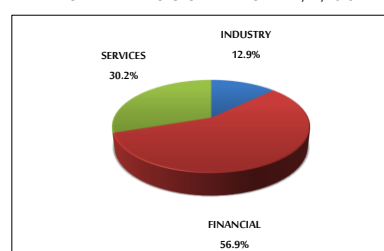
### MARKET CAPITALIZATION (JD)

	16,705,773,499	16,714,098,746	0.05%	-7.16%
--	----------------	----------------	-------	--------

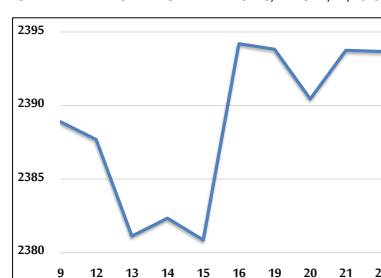
### VALUE TRADED FROM 9/11 TO 22/11/2023



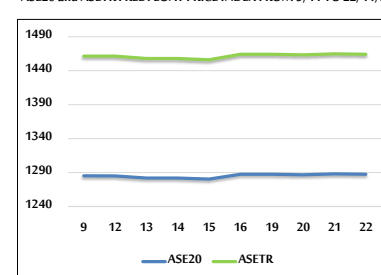
### VALUE TRADED BY SECTOR WEDNESDAY 22/11/2023



### GENERAL FREE FLOAT PRICE INDEX FROM 9/11 TO 22/11/2023



### ASE20 and ASETR FREE FLOAT PRICE INDEX FROM 9/11 TO 22/11/2023



### STOCK PRICE INDEX FROM 9/11 TO 22/11/2023

