

Daily Summary for Amman Stock Exchange

VALUE TRADED (JD)

	2022	2023	NET CHANGE	CHANGE (%)
Daily	4,867,178	2,321,136	-2,546,042	-52.31%
Cumulative (1/11-13/11)	59,380,404	30,567,350	-28,813,054	-48.52%
Cumulative (2/1-13/11)	1,752,682,985	1,308,343,179	-444,339,806	-25.35%

NO. OF SHARES TRADED

	2022	2023	NET CHANGE	CHANGE (%)
Daily	3,656,568	1,759,162	-1,897,406	-51.89%
Cumulative (1/11-13/11)	47,590,935	23,958,615	-23,632,320	-49.66%
Cumulative (2/1-13/11)	1,023,001,399	967,423,273	-55,578,126	-5.43%

NO. OF TRANSACTIONS

	2022	2023	NET CHANGE	CHANGE (%)
Daily	2,451	1,657	-794	-32.39%
Cumulative (1/11-13/11)	20,167	16,938	-3,229	-16.01%
Cumulative (2/1-13/11)	659,696	602,991	-56,705	-8.60%

SOME FINANCIAL RATIOS FOR THE ASE (13/11/2023)

SECTOR	P/E	P/BV	DIVIDEND YIELD (%)	TURNOVER (%)
FINANCIAL	7.747	0.798	5.764	0.027
SERVICES	11.405	1.297	6.776	0.032
INDUSTRY	6.723	1.521	7.618	0.025
OVERALL	7.278	1.003	6.815	0.028

STOCK PRICE INDEX WEIGHTED BY FREE FLOAT MARKET CAPITALIZATION (1999=1000)

	SUNDAY 12/11/2023	MONDAY 13/11/2023	% CHANGE	
			DAY BEFORE	YTD
GENERAL	2387.7	2381.1	-0.28%	-4.82%
FINANCIAL	2649.8	2644.2	-0.21%	-1.79%
SERVICES	1646.2	1637.9	-0.50%	-5.91%
INDUSTRY	4663.4	4656.0	-0.16%	-12.02%

STOCK PRICE INDEX WEIGHTED BY FREE FLOAT MARKET CAPITALIZATION ASE20 (2014=1000)

	1285.0	1282.0	-0.24%	-4.71%
--	--------	--------	--------	--------

Total Return Index ASETR (2021=1074)

	1461.4	1457.9	-0.24%	1.94%
--	--------	--------	--------	-------

STOCK PRICE INDEX WEIGHTED BY MARKET CAPITALIZATION (1991=1000)

	SUNDAY 12/11/2023	MONDAY 13/11/2023	% CHANGE	
			DAY BEFORE	YTD
GENERAL	4335.5	4331.8	-0.08%	-8.43%
BANKS	6512.2	6503.9	-0.13%	-3.70%
INSURANCE	1261.3	1260.8	-0.04%	-5.32%
SERVICES	857.7	856.1	-0.18%	0.48%
INDUSTRY	5728.7	5728.8	0.00%	-16.76%

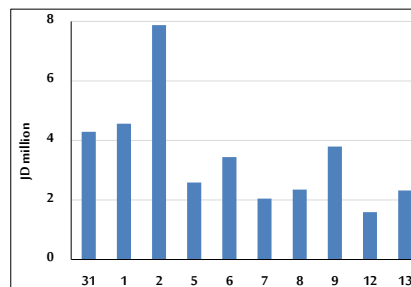
STOCK PRICE MARKET INDEX WEIGHTED BY FREE FLOAT MARKET CAP. (2012=1000)

	SUNDAY 12/11/2023	MONDAY 13/11/2023	% CHANGE	
			DAY BEFORE	YTD
FIRST MARKET	1333.6	1330.7	-0.22%	-5.53%
SECOND MARKET	834.6	829.6	-0.60%	5.21%

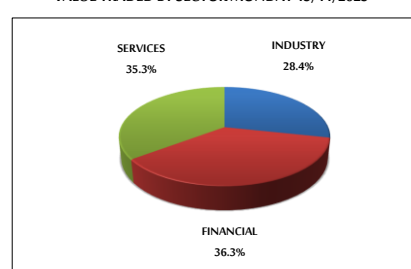
MARKET CAPITALIZATION (JD)

	16,635,382,150	16,620,515,400	-0.09%	-7.68%
--	----------------	----------------	--------	--------

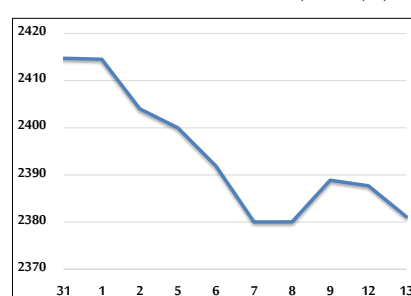
VALUE TRADED FROM 31/10 TO 13/11/2023



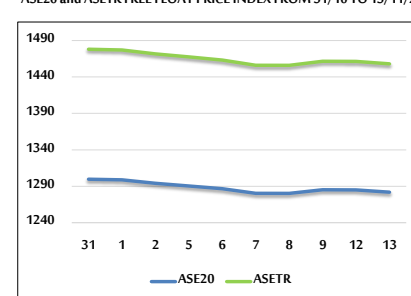
VALUE TRADED BY SECTOR MONDAY 13/11/2023



GENERAL FREE FLOAT PRICE INDEX FROM 31/10 TO 13/11/2023



ASE20 and ASETR FREE FLOAT PRICE INDEX FROM 31/10 TO 13/11/2023



STOCK PRICE INDEX FROM 31/10 TO 13/11/2023

