

Daily Summary for Amman Stock Exchange

VALUE TRADED (JD)

	2023	2024	NET CHANGE	CHANGE (%)
Daily	8,198,689	3,411,174	-4,787,515	-58.39%
Cumulative (2/1-21/1)	122,706,300	56,255,784	-66,450,516	-54.15%
Cumulative (2/1-21/1)	122,706,300	56,255,784	-66,450,516	-54.15%

NO. OF SHARES TRADED

	2023	2024	NET CHANGE	CHANGE (%)
Daily	5,627,586	3,589,932	-2,037,654	-36.21%
Cumulative (2/1-21/1)	72,267,352	53,154,772	-19,112,580	-26.45%
Cumulative (2/1-21/1)	72,267,352	53,154,772	-19,112,580	-26.45%

NO. OF TRANSACTIONS

	2023	2024	NET CHANGE	CHANGE (%)
Daily	3,395	2,518	-877	-25.83%
Cumulative (2/1-21/1)	51,169	36,977	-14,192	-27.74%
Cumulative (2/1-21/1)	51,169	36,977	-14,192	-27.74%

SOME FINANCIAL RATIOS FOR THE ASE (21/1/2024)

SECTOR	P/E	P/BV	DIVIDEND YIELD (%)	TURNOVER (%)
FINANCIAL	8.128	0.840	5.481	0.057
SERVICES	11.729	1.325	6.603	0.067
INDUSTRY	6.858	1.551	7.469	0.045
OVERALL	7.569	1.054	6.602	0.057

STOCK PRICE INDEX WEIGHTED BY FREE FLOAT MARKET CAPITALIZATION (1999=1000)

	THURSDAY 18/01/2024	SUNDAY 21/01/2024	% CHANGE	
			DAY BEFORE	YTD
GENERAL	2467.5	2462.6	-0.20%	1.29%
FINANCIAL	2754.8	2746.9	-0.28%	0.66%
SERVICES	1670.6	1665.0	-0.34%	1.27%
INDUSTRY	4825.2	4843.0	0.37%	2.63%

STOCK PRICE INDEX WEIGHTED BY FREE FLOAT MARKET CAPITALIZATION ASE20 (2014=1000)

	1328.5	1325.9	-0.20%	1.30%
--	--------	--------	--------	-------

Total Return Index ASETR (2021=1074)

	1510.9	1507.8	-0.20%	1.30%
--	--------	--------	--------	-------

STOCK PRICE INDEX WEIGHTED BY MARKET CAPITALIZATION (1991=1000)

	THURSDAY 18/01/2024	SUNDAY 21/01/2024	% CHANGE	
			DAY BEFORE	YTD
GENERAL	4505.4	4506.7	0.03%	2.05%
BANKS	6865.2	6857.9	-0.11%	1.81%
INSURANCE	1285.6	1290.7	0.39%	0.45%
SERVICES	891.5	888.1	-0.38%	1.08%
INDUSTRY	5840.0	5860.2	0.35%	2.69%

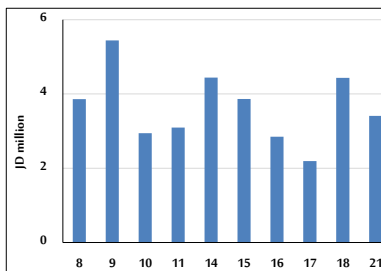
STOCK PRICE MARKET INDEX WEIGHTED BY FREE FLOAT MARKET CAP. (2012=1000)

	THURSDAY 18/01/2024	SUNDAY 21/01/2024	% CHANGE	
			DAY BEFORE	YTD
FIRST MARKET	1378.8	1376.1	-0.20%	1.26%
SECOND MARKET	871.9	870.9	-0.12%	0.77%

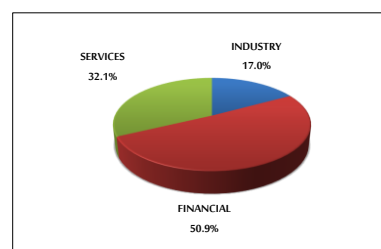
MARKET CAPITALIZATION (JD)

	17,220,163,038	17,224,552,177	0.03%	1.68%
--	----------------	----------------	-------	-------

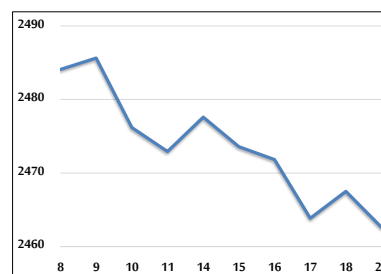
VALUE TRADED FROM 8/1 TO 21/1/2024



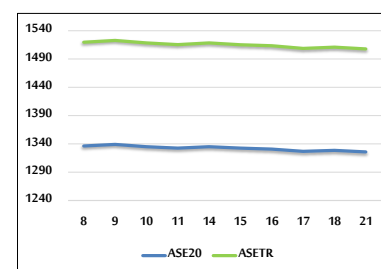
VALUE TRADED BY SECTOR SUNDAY 21/1/2024



GENERAL FREE FLOAT PRICE INDEX FROM 8/1 TO 21/1/2024



ASE20 and ASETR FREE FLOAT PRICE INDEX FROM 8/1 TO 21/1/2024



STOCK PRICE INDEX FROM 8/1 TO 21/1/2024

