

## Daily Summary for Amman Stock Exchange

### VALUE TRADED (JD)

	2023	2024	NET CHANGE	CHANGE (%)
Daily	6,811,648	4,509,947	-2,301,701	-33.79%
Cumulative (3/3-6/3)	25,504,863	16,996,041	-8,508,822	-33.36%
Cumulative (2/1-6/3)	399,579,499	222,576,249	-177,003,250	-44.30%

### NO. OF SHARES TRADED

	2023	2024	NET CHANGE	CHANGE (%)
Daily	4,948,412	3,865,576	-1,082,836	-21.88%
Cumulative (3/3-6/3)	22,481,966	16,049,409	-6,432,557	-28.61%
Cumulative (2/1-6/3)	247,426,180	186,500,456	-60,925,724	-24.62%

### NO. OF TRANSACTIONS

	2023	2024	NET CHANGE	CHANGE (%)
Daily	3,283	2,943	-340	-10.36%
Cumulative (3/3-6/3)	12,392	10,627	-1,765	-14.24%
Cumulative (2/1-6/3)	165,807	118,323	-47,484	-28.64%

### SOME FINANCIAL RATIOS FOR THE ASE (6/3/2024)

SECTOR	P/E	P/BV	DIVIDEND YIELD (%)	TURNOVER (%)
FINANCIAL	9.118	0.782	5.782	0.050
SERVICES	11.558	1.361	6.411	0.077
INDUSTRY	7.346	1.558	7.353	0.101
OVERALL	8.271	1.012	6.719	0.062

### STOCK PRICE INDEX WEIGHTED BY FREE FLOAT MARKET CAPITALIZATION (1999=1000)

	TUESDAY 05/03/2024	WEDNESDAY 06/03/2024	% CHANGE	
			DAY BEFORE	YTD
GENERAL	2472.3	2479.6	0.29%	1.99%
FINANCIAL	2712.2	2718.4	0.23%	-0.39%
SERVICES	1719.6	1731.4	0.69%	5.31%
INDUSTRY	4872.7	4865.7	-0.14%	3.12%

### STOCK PRICE INDEX WEIGHTED BY FREE FLOAT MARKET CAPITALIZATION ASE20 (2014=1000)

	1333.4	1337.8	0.33%	2.21%
--	--------	--------	-------	-------

### Total Return Index ASETR (2021=1074)

	1516.4	1521.4	0.33%	2.21%
--	--------	--------	-------	-------

### STOCK PRICE INDEX WEIGHTED BY MARKET CAPITALIZATION (1991=1000)

	TUESDAY 05/03/2024	WEDNESDAY 06/03/2024	% CHANGE	
			DAY BEFORE	YTD
GENERAL	4486.0	4497.1	0.25%	1.83%
BANKS	6690.0	6726.6	0.55%	-0.13%
INSURANCE	1305.3	1312.9	0.58%	2.18%
SERVICES	897.5	897.3	-0.02%	2.12%
INDUSTRY	5965.8	5961.5	-0.07%	4.47%

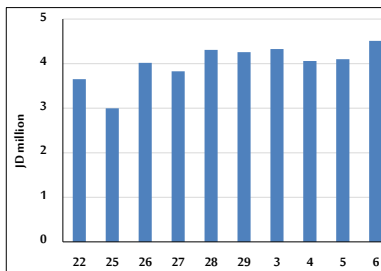
### STOCK PRICE MARKET INDEX WEIGHTED BY FREE FLOAT MARKET CAP. (2012=1000)

	TUESDAY 05/03/2024	WEDNESDAY 06/03/2024	% CHANGE	
			DAY BEFORE	YTD
FIRST MARKET	1383.9	1387.9	0.29%	2.13%
SECOND MARKET	856.3	856.6	0.03%	-0.89%

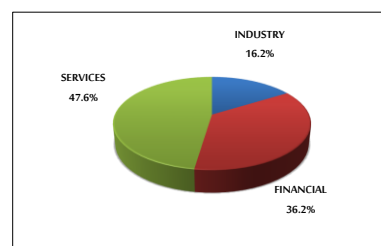
### MARKET CAPITALIZATION (JD)

	17,109,447,956	17,153,312,164	0.26%	1.26%
--	----------------	----------------	-------	-------

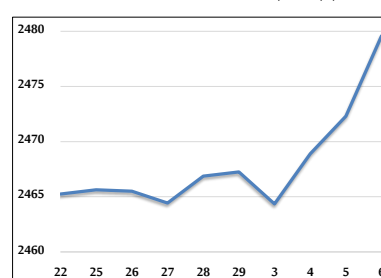
### VALUE TRADED FROM 22/2 TO 6/3/2024



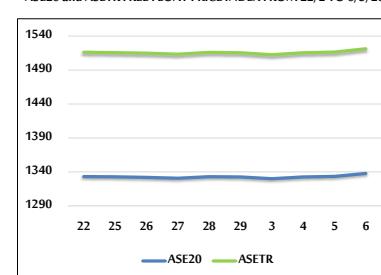
### VALUE TRADED BY SECTOR WEDNESDAY 6/3/2024



### GENERAL FREE FLOAT PRICE INDEX FROM 22/2 TO 6/3/2024



### ASE20 and ASETR FREE FLOAT PRICE INDEX FROM 22/2 TO 6/3/2024



### STOCK PRICE INDEX FROM 22/2 TO 6/3/2024

