

Daily Summary for Amman Stock Exchange

VALUE TRADED (JD)

	2023	2024	NET CHANGE	CHANGE (%)
Daily	8,378,619	3,984,801	-4,393,818	-52.44%
Cumulative (1/4-2/4)	13,791,065	6,681,510	-7,109,555	-51.55%
Cumulative (2/1-2/4)	547,929,362	292,055,218	-255,874,144	-46.70%

NO. OF SHARES TRADED

	2023	2024	NET CHANGE	CHANGE (%)
Daily	4,629,445	3,091,282	-1,538,163	-33.23%
Cumulative (1/4-2/4)	9,919,231	4,603,478	-5,315,753	-53.59%
Cumulative (2/1-2/4)	350,489,268	235,294,360	-115,194,908	-32.87%

NO. OF TRANSACTIONS

	2023	2024	NET CHANGE	CHANGE (%)
Daily	2,544	1,572	-972	-38.21%
Cumulative (1/4-2/4)	4,769	3,079	-1,690	-35.44%
Cumulative (2/1-2/4)	218,776	152,812	-65,964	-30.15%

SOME FINANCIAL RATIOS FOR THE ASE (2/4/2024)

SECTOR	P/E	P/BV	DIVIDEND YIELD (%)	TURNOVER (%)
FINANCIAL	8.916	0.761	5.909	0.062
SERVICES	11.988	1.341	5.522	0.024
INDUSTRY	7.327	1.412	0.295	0.033
OVERALL	8.161	0.973	4.124	0.050

STOCK PRICE INDEX WEIGHTED BY FREE FLOAT MARKET CAPITALIZATION (1999=1000)

	MONDAY 01/04/2024	TUESDAY 02/04/2024	% CHANGE	
			DAY BEFORE	YTD
GENERAL	2437.2	2437.0	-0.01%	0.24%
FINANCIAL	2640.2	2636.0	-0.16%	-3.41%
SERVICES	1756.3	1751.6	-0.26%	6.55%
INDUSTRY	4786.1	4828.3	0.88%	2.32%

STOCK PRICE INDEX WEIGHTED BY FREE FLOAT MARKET CAPITALIZATION ASE20 (2014=1000)

	1315.5	1315.4	0.00%	0.50%
--	--------	--------	-------	-------

Total Return Index ASETR (2021=1074)

	1535.4	1535.3	0.00%	3.15%
--	--------	--------	-------	-------

STOCK PRICE INDEX WEIGHTED BY MARKET CAPITALIZATION (1991=1000)

	MONDAY 01/04/2024	TUESDAY 02/04/2024	% CHANGE	
			DAY BEFORE	YTD
GENERAL	4419.2	4433.9	0.33%	0.40%
BANKS	6555.1	6549.2	-0.09%	-2.77%
INSURANCE	1309.2	1312.8	0.28%	2.17%
SERVICES	899.2	900.4	0.13%	2.47%
INDUSTRY	5885.7	5941.5	0.95%	4.11%

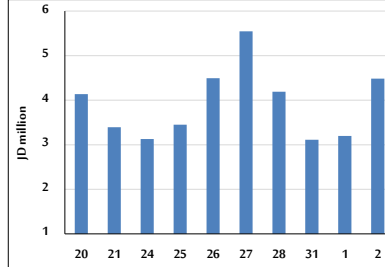
STOCK PRICE MARKET INDEX WEIGHTED BY FREE FLOAT MARKET CAP. (2012=1000)

	MONDAY 01/04/2024	TUESDAY 02/04/2024	% CHANGE	
			DAY BEFORE	YTD
FIRST MARKET	1365.9	1365.9	0.00%	0.51%
SECOND MARKET	834.0	832.6	-0.16%	-3.66%

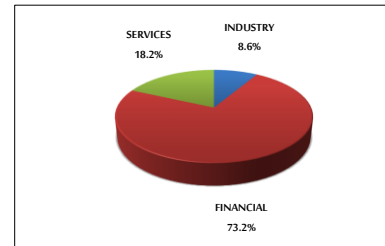
MARKET CAPITALIZATION (JD)

	16,868,548,145	16,860,550,323	-0.05%	-0.46%
--	----------------	----------------	--------	--------

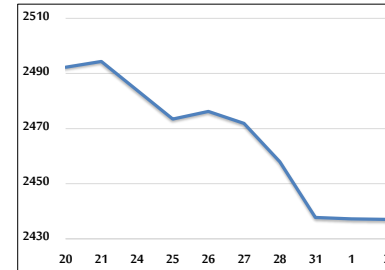
VALUE TRADED FROM 20/3 TO 2/4/2024



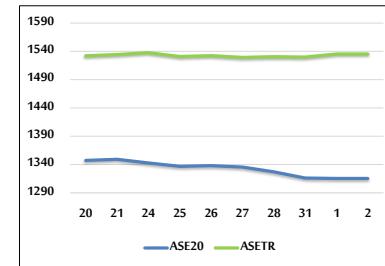
VALUE TRADED BY SECTOR TUESDAY 2/4/2024



GENERAL FREE FLOAT PRICE INDEX FROM 20/3 TO 2/4/2024



ASE20 and ASETR FREE FLOAT PRICE INDEX FROM 20/3 TO 2/4/2024



STOCK PRICE INDEX FROM 20/3 TO 2/4/2024

