

Daily Summary for Amman Stock Exchange

VALUE TRADED (JD)

	2023	2024	NET CHANGE	CHANGE (%)
Daily	3,209,120	4,060,254	851,134	26.52%
Cumulative (1/4-18/4)	52,559,648	46,179,408	-6,380,240	-12.14%
Cumulative (2/1-18/4)	586,697,945	331,553,116	-255,144,829	-43.49%

NO. OF SHARES TRADED

	2023	2024	NET CHANGE	CHANGE (%)
Daily	2,149,233	2,082,908	-66,325	-3.09%
Cumulative (1/4-18/4)	33,634,171	32,020,011	-1,614,160	-4.80%
Cumulative (2/1-18/4)	374,204,208	262,710,893	-111,493,315	-29.79%

NO. OF TRANSACTIONS

	2023	2024	NET CHANGE	CHANGE (%)
Daily	1,476	2,304	828	56.10%
Cumulative (1/4-18/4)	24,232	22,801	-1,431	-5.91%
Cumulative (2/1-18/4)	238,239	172,534	-65,705	-27.58%

SOME FINANCIAL RATIOS FOR THE ASE (18/4/2024)

SECTOR	P/E	P/BV	DIVIDEND YIELD (%)	TURNOVER (%)
FINANCIAL	8.909	0.762	5.905	0.023
SERVICES	11.705	1.309	5.690	0.043
INDUSTRY	7.939	1.530	5.667	0.078
OVERALL	8.390	1.000	6.058	0.034

STOCK PRICE INDEX WEIGHTED BY FREE FLOAT MARKET CAPITALIZATION (1999=1000)

	WEDNESDAY 17/04/2024	THURSDAY 18/04/2024	% CHANGE	
			DAY BEFORE	YTD
GENERAL	2458.3	2456.0	-0.10%	1.02%
FINANCIAL	2650.4	2645.8	-0.17%	-3.05%
SERVICES	1694.4	1691.0	-0.20%	2.86%
INDUSTRY	5217.6	5230.9	0.25%	10.85%

STOCK PRICE INDEX WEIGHTED BY FREE FLOAT MARKET CAPITALIZATION ASE20 (2014=1000)

	1328.8	1327.4	-0.10%	1.42%
--	--------	--------	--------	-------

Total Return Index ASETR (2021=1074)

	1567.6	1565.9	-0.10%	5.20%
--	--------	--------	--------	-------

STOCK PRICE INDEX WEIGHTED BY MARKET CAPITALIZATION (1991=1000)

	WEDNESDAY 17/04/2024	THURSDAY 18/04/2024	% CHANGE	
			DAY BEFORE	YTD
GENERAL	4552.1	4558.2	0.14%	3.21%
BANKS	6577.1	6571.8	-0.08%	-2.43%
INSURANCE	1309.9	1312.2	0.18%	2.12%
SERVICES	895.2	896.4	0.14%	2.02%
INDUSTRY	6337.0	6362.5	0.40%	11.49%

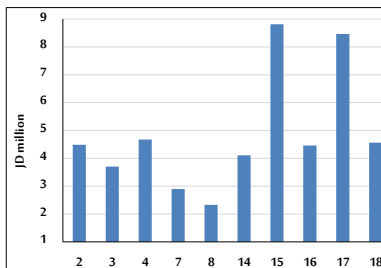
STOCK PRICE MARKET INDEX WEIGHTED BY FREE FLOAT MARKET CAP. (2012=1000)

	WEDNESDAY 17/04/2024	THURSDAY 18/04/2024	% CHANGE	
			DAY BEFORE	YTD
FIRST MARKET	1379.6	1378.3	-0.10%	1.42%
SECOND MARKET	828.0	827.5	-0.06%	-4.25%

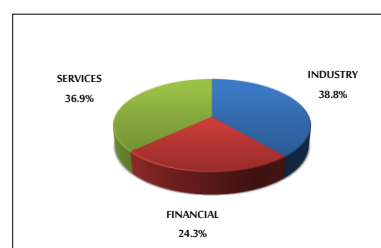
MARKET CAPITALIZATION (JD)

	17,265,524,537	17,285,704,194	0.12%	2.05%
--	----------------	----------------	-------	-------

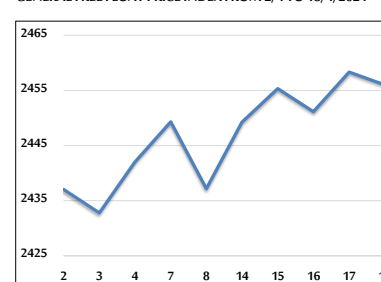
VALUE TRADED FROM 2/4 TO 18/4/2024



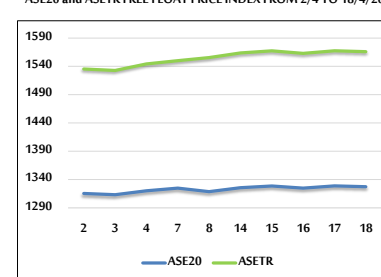
VALUE TRADED BY SECTOR THURSDAY 18/4/2024



GENERAL FREE FLOAT PRICE INDEX FROM 2/4 TO 18/4/2024



ASE20 and ASETR FREE FLOAT PRICE INDEX FROM 2/4 TO 18/4/2024



STOCK PRICE INDEX FROM 2/4 TO 18/4/2024

