

Daily Summary for Amman Stock Exchange

VALUE TRADED (JD)

	2023	2024	NET CHANGE	CHANGE (%)
Daily	4,418,926	2,396,365	-2,022,561	-45.77%
Cumulative (1/4-7/4)	25,567,688	16,449,507	-9,118,181	-35.66%
Cumulative (2/1-7/4)	559,705,985	301,823,215	-257,882,770	-46.07%

NO. OF SHARES TRADED

	2023	2024	NET CHANGE	CHANGE (%)
Daily	3,005,406	2,447,346	-558,060	-18.57%
Cumulative (1/4-7/4)	18,280,577	12,416,468	-5,864,109	-32.08%
Cumulative (2/1-7/4)	358,850,614	243,107,350	-115,743,264	-32.25%

NO. OF TRANSACTIONS

	2023	2024	NET CHANGE	CHANGE (%)
Daily	2,146	1,282	-864	-40.26%
Cumulative (1/4-7/4)	10,614	8,247	-2,367	-22.30%
Cumulative (2/1-7/4)	224,621	157,980	-66,641	-29.67%

SOME FINANCIAL RATIOS FOR THE ASE (7/4/2024)

SECTOR	P/E	P/BV	DIVIDEND YIELD (%)	TURNOVER (%)
FINANCIAL	8.964	0.765	5.878	0.043
SERVICES	11.944	1.336	5.577	0.039
INDUSTRY	7.349	1.416	0.359	0.024
OVERALL	8.185	0.976	4.118	0.040

STOCK PRICE INDEX WEIGHTED BY FREE FLOAT MARKET CAPITALIZATION (1999=1000)

	THURSDAY 04/04/2024	SUNDAY 07/04/2024	% CHANGE	
			DAY BEFORE	YTD
GENERAL	2442.0	2449.3	0.30%	0.74%
FINANCIAL	2640.1	2654.9	0.56%	-2.71%
SERVICES	1749.5	1749.3	-0.01%	6.40%
INDUSTRY	4871.4	4854.6	-0.34%	2.88%

STOCK PRICE INDEX WEIGHTED BY FREE FLOAT MARKET CAPITALIZATION ASE20 (2014=1000)

	1320.1	1324.9	0.36%	1.23%
--	--------	--------	-------	-------

Total Return Index ASETR (2021=1074)

	1544.4	1550.0	0.36%	4.14%
--	--------	--------	-------	-------

STOCK PRICE INDEX WEIGHTED BY MARKET CAPITALIZATION (1991=1000)

	THURSDAY 04/04/2024	SUNDAY 07/04/2024	% CHANGE	
			DAY BEFORE	YTD
GENERAL	4441.2	4446.9	0.13%	0.69%
BANKS	6553.3	6593.0	0.61%	-2.12%
INSURANCE	1309.5	1311.0	0.12%	2.03%
SERVICES	894.1	893.5	-0.06%	1.69%
INDUSTRY	5975.9	5949.5	-0.44%	4.26%

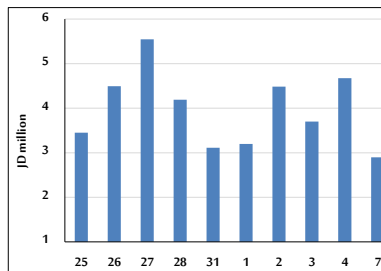
STOCK PRICE MARKET INDEX WEIGHTED BY FREE FLOAT MARKET CAP. (2012=1000)

	THURSDAY 04/04/2024	SUNDAY 07/04/2024	% CHANGE	
			DAY BEFORE	YTD
FIRST MARKET	1369.8	1374.9	0.37%	1.17%
SECOND MARKET	825.4	823.7	-0.20%	-4.69%

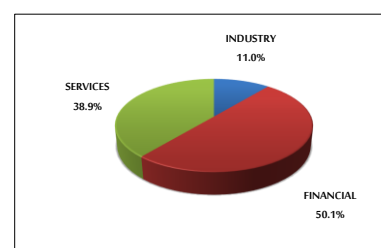
MARKET CAPITALIZATION (JD)

	16,893,395,228	16,912,966,957	0.12%	-0.15%
--	----------------	----------------	-------	--------

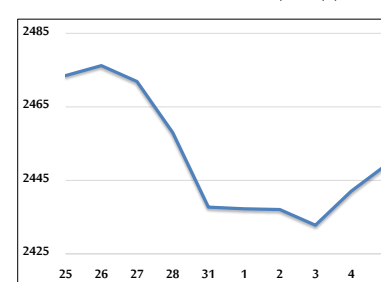
VALUE TRADED FROM 25/3 TO 7/4/2024



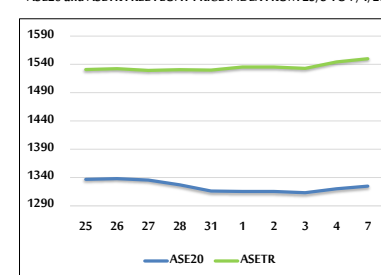
VALUE TRADED BY SECTOR SUNDAY 7/4/2024



GENERAL FREE FLOAT PRICE INDEX FROM 25/3 TO 7/4/2024



ASE20 and ASETR FREE FLOAT PRICE INDEX FROM 25/3 TO 7/4/2024



STOCK PRICE INDEX FROM 25/3 TO 7/4/2024

