

Daily Summary for Amman Stock Exchange

1- VALUE TRADED (JD)

	2018	2019	NET CHANGE	CHANGE (%)
Daily	3,958,470	4,128,976	170,506	4.31%
Cumulative(2/1-20/1)	44,046,795	54,651,795	10,605,000	24.08%
Cumulative(2/1-20/1)	44,046,795	54,651,795	10,605,000	24.08%

2- NO. OF SHARES TRADED

	2018	2019	NET CHANGE	CHANGE (%)
Daily	4,879,338	4,271,075	-608,263	-12.47%
Cumulative(2/1-20/1)	46,143,350	35,740,437	-10,402,913	-22.54%
Cumulative(2/1-20/1)	46,143,350	35,740,437	-10,402,913	-22.54%

3- NO. OF TRANSACTIONS

	2018	2019	NET CHANGE	CHANGE (%)
Daily	2,405	1,710	-695	-28.90%
Cumulative(2/1-20/1)	24,841	19,163	-5,678	-22.86%
Cumulative(2/1-20/1)	24,841	19,163	-5,678	-22.86%

4- SOME FINANCIAL RATIOS FOR THE ASE (20/1/2019)

SECTOR	P/E	P/BV	DIVIDEND YIELD (%)	TURNOVER (%)
FINANCIAL	17.295	1.085	5.043	0.062
SERVICES	16.575	1.210	5.433	0.063
INDUSTRY	54.942	1.328	3.451	0.072
OVERALL	18.358	1.165	4.910	0.064

5- STOCK PRICE INDEX WEIGHTED BY FREE FLOAT MARKET CAPITALIZATION (1999=1000)

	WEDNESDAY 16/01/2019	SUNDAY 20/01/2019	% CHANGE	
			DAY BEFORE	YTD
GENERAL	1914.4	1917.0	0.14%	0.43%
FINANCIAL	2629.0	2638.0	0.34%	-0.55%
SERVICES	1293.7	1293.4	-0.03%	1.06%
INDUSTRY	1942.2	1936.6	-0.29%	2.86%

6- STOCK PRICE INDEX WEIGHTED BY MARKET CAPITALIZATION (1991=1000)

	TUESDAY 15/01/2019	SUNDAY 20/01/2019	% CHANGE	
			DAY BEFORE	YTD
GENERAL	3808.3	3818.3	0.26%	0.56%
BANKS	8128.1	8147.2	0.24%	-1.20%
INSURANCE	1357.5	1345.0	-0.92%	-2.29%
SERVICES	813.1	819.8	0.82%	2.88%
INDUSTRY	2414.6	2414.8	0.01%	4.48%

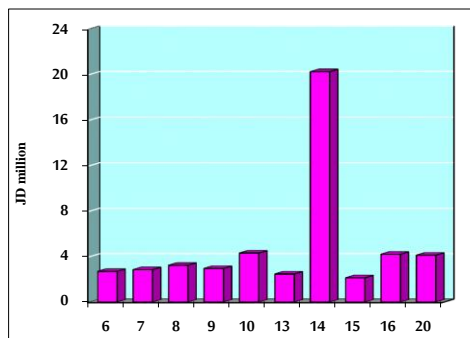
7- STOCK PRICE MARKET INDEX WEIGHTED BY FREE FLOAT MARKET CAP. (2012=1000)

	TUESDAY 15/01/2019	SUNDAY 20/01/2019	% CHANGE	
			DAY BEFORE	YTD
FIRST MARKET	1009.9	1012.1	0.22%	0.08%
SECOND MARKET	866.0	865.3	-0.08%	4.05%

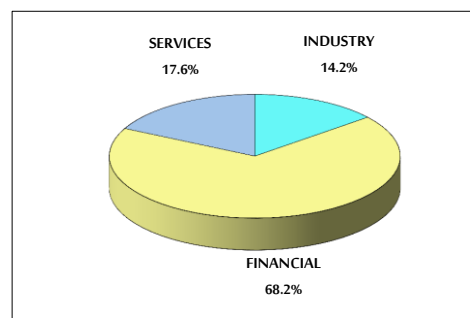
8- MARKET CAPITALIZATION (JD)

ASE MARKET CAPITALIZATION	16,125,331,321	16,168,583,254	0.27%	0.28%
---------------------------	----------------	----------------	-------	-------

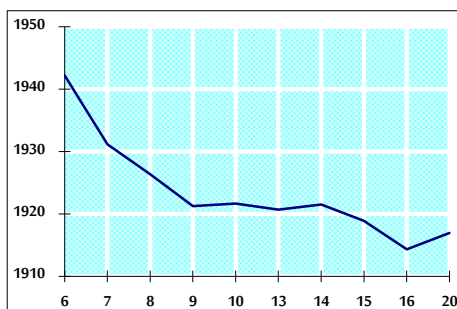
VALUE TRADED FROM 6/1 TO 20/1/2019



VALUE TRADED BY SECTOR SUNDAY 20/1/2019



GENERAL FREE FLOAT PRICE INDEX FROM 6/1 TO 20/1/2019



GENERAL PRICE INDEX FROM 6/1 TO 20/1/2019

