

## Daily Summary for Amman Stock Exchange

### 1- VALUE TRADED (JD)

	2018	2019	NET CHANGE	CHANGE (%)
Daily	8,385,354	4,508,367	-3,876,987	-46.24%
Cumulative(3/2-3/2)	8,385,354	4,508,367	-3,876,987	-46.24%
Cumulative(2/1-3/2)	122,408,348	95,402,737	-27,005,611	-22.06%

### 2- NO. OF SHARES TRADED

	2018	2019	NET CHANGE	CHANGE (%)
Daily	4,306,017	3,066,662	-1,239,355	-28.78%
Cumulative(3/2-3/2)	4,306,017	3,066,662	-1,239,355	-28.78%
Cumulative(2/1-3/2)	100,546,459	68,815,265	-31,731,194	-31.56%

### 3- NO. OF TRANSACTIONS

	2018	2019	NET CHANGE	CHANGE (%)
Daily	2,451	2,606	155	6.32%
Cumulative(3/2-3/2)	2,451	2,606	155	6.32%
Cumulative(2/1-3/2)	49,672	38,523	-11,149	-22.45%

### 4- SOME FINANCIAL RATIOS FOR THE ASE (3/2/2019)

SECTOR	P/E	P/BV	DIVIDEND YIELD (%)	TURNOVER (%)
FINANCIAL	17.623	1.105	4.948	0.047
SERVICES	16.930	1.236	5.319	0.030
INDUSTRY	55.788	1.348	3.398	0.066
OVERALL	18.742	1.190	4.809	0.046

### 5- STOCK PRICE INDEX WEIGHTED BY FREE FLOAT MARKET CAPITALIZATION (1999=1000)

	THURSDAY 31/01/2019	SUNDAY 03/02/2019	% CHANGE	
			DAY BEFORE	YTD
GENERAL	1951.6	1960.6	0.46%	2.71%
FINANCIAL	2683.4	2694.1	0.40%	1.56%
SERVICES	1317.9	1329.3	0.87%	3.87%
INDUSTRY	1945.5	1945.5	0.00%	3.34%

### 6- STOCK PRICE INDEX WEIGHTED BY MARKET CAPITALIZATION (1991=1000)

	THURSDAY 31/01/2019	SUNDAY 03/02/2019	% CHANGE	
			DAY BEFORE	YTD
GENERAL	3872.5	3895.5	0.59%	2.59%
BANKS	8264.8	8309.4	0.54%	0.77%
INSURANCE	1350.9	1353.7	0.20%	-1.66%
SERVICES	825.1	837.4	1.49%	5.09%
INDUSTRY	2462.0	2465.0	0.12%	6.65%

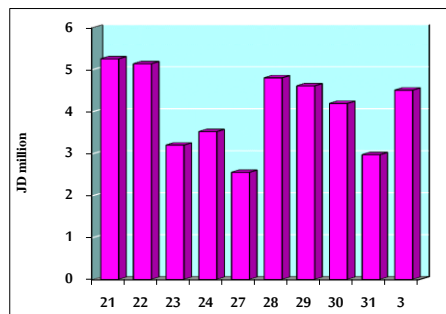
### 7- STOCK PRICE MARKET INDEX WEIGHTED BY FREE FLOAT MARKET CAP. (2012=1000)

	THURSDAY 31/01/2019	SUNDAY 03/02/2019	% CHANGE	
			DAY BEFORE	YTD
FIRST MARKET	1033.2	1036.7	0.35%	2.52%
SECOND MARKET	871.7	883.4	1.33%	6.22%

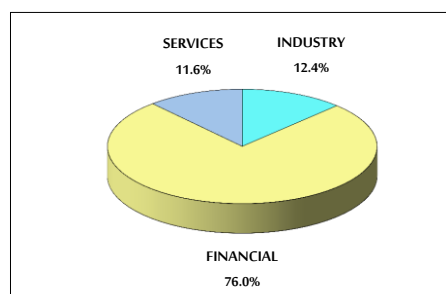
### 8- MARKET CAPITALIZATION (JD)

ASE MARKET CAPITALIZATION	16,379,057,402	16,469,909,481	0.55%	2.15%
---------------------------	----------------	----------------	-------	-------

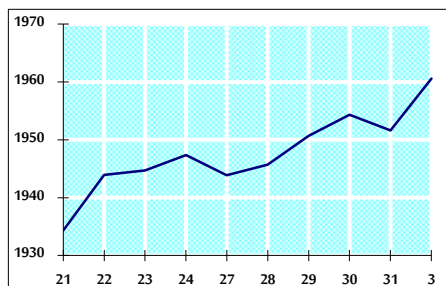
VALUE TRADED FROM 21/1 TO 3/2/2019



VALUE TRADED BY SECTOR SUNDAY 3/2/2019



GENERAL FREE FLOAT PRICE INDEX FROM 21/1 TO 3/2/2019



GENERAL PRICE INDEX FROM 21/1 TO 3/2/2019

