

Daily Summary for Amman Stock Exchange

1- VALUE TRADED (JD)

	2018	2019	NET CHANGE	CHANGE (%)
Daily	19,181,537	4,150,509	-15,031,028	-78.36%
Cumulative(3/2-4/2)	27,566,891	8,658,876	-18,908,015	-68.59%
Cumulative(2/1-4/2)	141,589,885	99,553,246	-42,036,639	-29.69%

2- NO. OF SHARES TRADED

	2018	2019	NET CHANGE	CHANGE (%)
Daily	35,146,649	2,785,279	-32,361,370	-92.08%
Cumulative(3/2-4/2)	39,452,666	5,851,941	-33,600,725	-85.17%
Cumulative(2/1-4/2)	135,693,108	71,600,544	-64,092,564	-47.23%

3- NO. OF TRANSACTIONS

	2018	2019	NET CHANGE	CHANGE (%)
Daily	3,031	2,106	-925	-30.52%
Cumulative(3/2-4/2)	5,482	4,712	-770	-14.05%
Cumulative(2/1-4/2)	52,703	40,629	-12,074	-22.91%

4- SOME FINANCIAL RATIOS FOR THE ASE (4/2/2019)

SECTOR	P/E	P/BV	DIVIDEND YIELD (%)	TURNOVER (%)
FINANCIAL	17.532	1.100	4.974	0.043
SERVICES	17.082	1.247	5.272	0.029
INDUSTRY	57.287	1.352	3.391	0.056
OVERALL	18.744	1.188	4.817	0.041

5- STOCK PRICE INDEX WEIGHTED BY FREE FLOAT MARKET CAPITALIZATION (1999=1000)

	SUNDAY 03/02/2019	MONDAY 04/02/2019	% CHANGE	
			DAY BEFORE	YTD
GENERAL	1960.6	1962.1	0.08%	2.79%
FINANCIAL	2694.1	2687.4	-0.25%	1.31%
SERVICES	1329.3	1336.8	0.56%	4.46%
INDUSTRY	1945.5	1955.1	0.49%	3.84%

6- STOCK PRICE INDEX WEIGHTED BY MARKET CAPITALIZATION (1991=1000)

	SUNDAY 03/02/2019	MONDAY 04/02/2019	% CHANGE	
			DAY BEFORE	YTD
GENERAL	3895.5	3889.1	-0.16%	2.42%
BANKS	8309.4	8263.0	-0.56%	0.21%
INSURANCE	1353.7	1356.0	0.17%	-1.49%
SERVICES	837.4	844.3	0.83%	5.96%
INDUSTRY	2465.0	2471.7	0.27%	6.94%

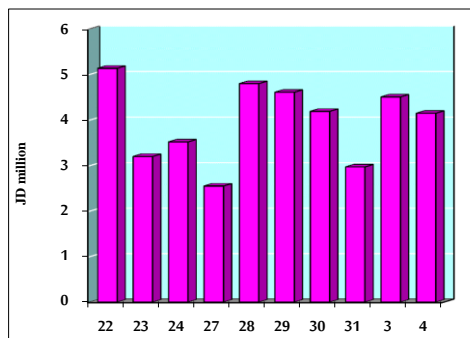
7- STOCK PRICE MARKET INDEX WEIGHTED BY FREE FLOAT MARKET CAP. (2012=1000)

	SUNDAY 03/02/2019	MONDAY 04/02/2019	% CHANGE	
			DAY BEFORE	YTD
FIRST MARKET	1036.7	1038.0	0.12%	2.64%
SECOND MARKET	883.4	883.3	-0.01%	6.21%

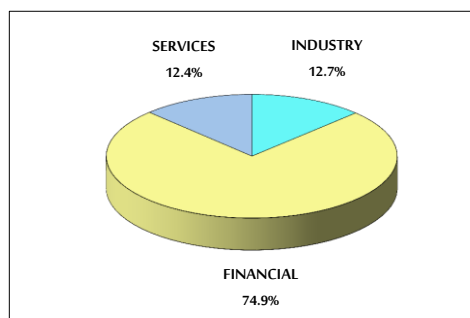
8- MARKET CAPITALIZATION (JD)

ASE MARKET CAPITALIZATION	16,469,909,481	16,444,110,184	-0.16%	1.99%
---------------------------	----------------	----------------	--------	-------

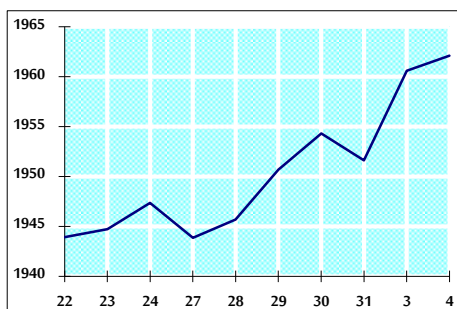
VALUE TRADED FROM 22/1 TO 4/2/2019



VALUE TRADED BY SECTOR MONDAY 4/2/2019



GENERAL FREE FLOAT PRICE INDEX FROM 22/1 TO 4/2/2019



GENERAL PRICE INDEX FROM 22/1 TO 4/2/2019

