

Daily Summary for Amman Stock Exchange

1- VALUE TRADED (JD)

	2018	2019	NET CHANGE	CHANGE (%)
Daily	10,503,356	3,295,155	-7,208,201	-68.63%
Cumulative(3/2-24/2)	116,412,593	74,350,587	-42,062,006	-36.13%
Cumulative(2/1-24/2)	230,435,587	165,244,957	-65,190,630	-28.29%

2- NO. OF SHARES TRADED

	2018	2019	NET CHANGE	CHANGE (%)
Daily	4,794,235	3,515,987	-1,278,248	-26.66%
Cumulative(3/2-24/2)	101,748,645	57,009,896	-44,738,749	-43.97%
Cumulative(2/1-24/2)	197,989,087	122,758,499	-75,230,588	-38.00%

3- NO. OF TRANSACTIONS

	2018	2019	NET CHANGE	CHANGE (%)
Daily	2,814	1,552	-1,262	-44.85%
Cumulative(3/2-24/2)	40,275	30,775	-9,500	-23.59%
Cumulative(2/1-24/2)	87,496	66,692	-20,804	-23.78%

4- SOME FINANCIAL RATIOS FOR THE ASE (24/2/2019)

SECTOR	P/E	P/BV	DIVIDEND YIELD (%)	TURNOVER (%)
FINANCIAL	13.081	1.100	5.168	0.061
SERVICES	17.147	1.230	5.233	0.034
INDUSTRY	59.407	1.363	3.345	0.046
OVERALL	14.966	1.187	4.947	0.052

5- STOCK PRICE INDEX WEIGHTED BY FREE FLOAT MARKET CAPITALIZATION (1999=1000)

	THURSDAY 21/02/2019	SUNDAY 24/02/2019	% CHANGE	
			DAY BEFORE	YTD
GENERAL	1980.5	1984.3	0.19%	3.96%
FINANCIAL	2725.7	2728.3	0.10%	2.85%
SERVICES	1328.3	1328.2	-0.01%	3.78%
INDUSTRY	1955.9	1971.3	0.78%	4.70%

6- STOCK PRICE INDEX WEIGHTED BY MARKET CAPITALIZATION (1991=1000)

	THURSDAY 21/02/2019	SUNDAY 24/02/2019	% CHANGE	
			DAY BEFORE	YTD
GENERAL	3909.9	3916.2	0.16%	3.14%
BANKS	8359.6	8361.4	0.02%	1.40%
INSURANCE	1373.6	1381.1	0.55%	0.33%
SERVICES	826.0	827.6	0.18%	3.86%
INDUSTRY	2485.8	2499.1	0.53%	8.12%

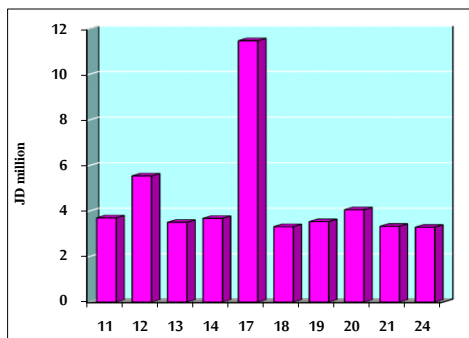
7- STOCK PRICE MARKET INDEX WEIGHTED BY FREE FLOAT MARKET CAP. (2012=1000)

	THURSDAY 21/02/2019	SUNDAY 24/02/2019	% CHANGE	
			DAY BEFORE	YTD
FIRST MARKET	1053.9	1055.6	0.16%	4.38%
SECOND MARKET	861.3	865.3	0.47%	4.05%

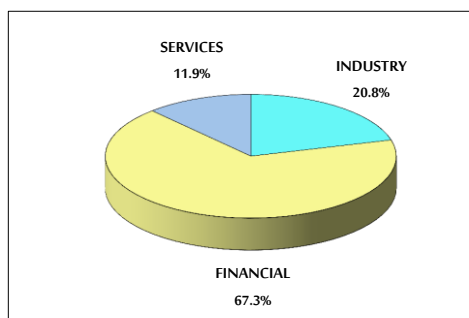
8- MARKET CAPITALIZATION (JD)

ASE MARKET CAPITALIZATION	16,512,481,713	16,537,530,597	0.15%	2.57%
---------------------------	----------------	----------------	-------	-------

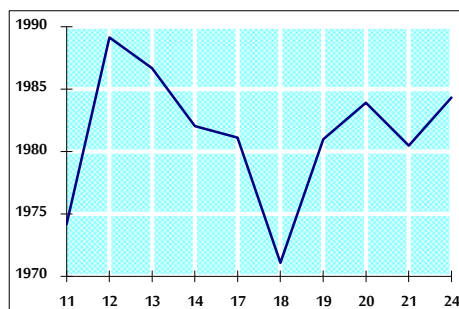
VALUE TRADED FROM 11/2 TO 24/2/2019



VALUE TRADED BY SECTOR SUNDAY 24/2/2019



GENERAL FREE FLOAT PRICE INDEX FROM 11/2 TO 24/2/2019



GENERAL PRICE INDEX FROM 11/2 TO 24/2/2019

