

Daily Summary for Amman Stock Exchange

1- VALUE TRADED (JD)

	2018	2019	NET CHANGE	CHANGE (%)
Daily	4,751,647	9,185,211	4,433,564	93.31%
Cumulative(3/3-5/3)	14,569,682	16,669,752	2,100,070	14.41%
Cumulative(2/1-5/3)	267,512,054	204,768,287	-62,743,767	-23.45%

2- NO. OF SHARES TRADED

	2018	2019	NET CHANGE	CHANGE (%)
Daily	4,567,048	5,761,908	1,194,860	26.16%
Cumulative(3/3-5/3)	12,180,670	13,468,119	1,287,449	10.57%
Cumulative(2/1-5/3)	226,029,931	159,698,729	-66,331,202	-29.35%

3- NO. OF TRANSACTIONS

	2018	2019	NET CHANGE	CHANGE (%)
Daily	2,360	2,149	-211	-8.94%
Cumulative(3/3-5/3)	6,675	6,148	-527	-7.90%
Cumulative(2/1-5/3)	103,361	81,495	-21,866	-21.15%

4- SOME FINANCIAL RATIOS FOR THE ASE (5/3/2019)

SECTOR	P/E	P/BV	DIVIDEND YIELD (%)	TURNOVER (%)
FINANCIAL	12.950	1.104	5.123	0.101
SERVICES	16.560	1.205	5.428	0.060
INDUSTRY	59.372	1.355	3.367	0.061
OVERALL	14.965	1.186	4.952	0.086

5- STOCK PRICE INDEX WEIGHTED BY FREE FLOAT MARKET CAPITALIZATION (1999=1000)

	MONDAY 04/03/2019	TUESDAY 05/03/2019	% CHANGE	
			DAY BEFORE	YTD
GENERAL	1983.5	1984.0	0.02%	3.94%
FINANCIAL	2734.4	2735.7	0.05%	3.13%
SERVICES	1320.8	1320.5	-0.02%	3.18%
INDUSTRY	1965.5	1966.3	0.04%	4.44%

6- STOCK PRICE INDEX WEIGHTED BY MARKET CAPITALIZATION (1991=1000)

	MONDAY 04/03/2019	TUESDAY 05/03/2019	% CHANGE	
			DAY BEFORE	YTD
GENERAL	3906.9	3914.3	0.19%	3.09%
BANKS	8361.0	8400.7	0.48%	1.88%
INSURANCE	1364.9	1365.9	0.08%	-0.77%
SERVICES	820.4	815.3	-0.62%	2.31%
INDUSTRY	2486.9	2485.1	-0.07%	7.52%

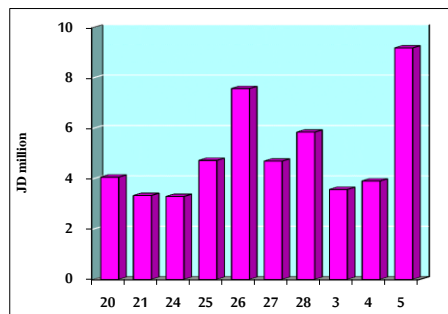
7- STOCK PRICE MARKET INDEX WEIGHTED BY FREE FLOAT MARKET CAP. (2012=1000)

	MONDAY 04/03/2019	TUESDAY 05/03/2019	% CHANGE	
			DAY BEFORE	YTD
FIRST MARKET	1055.8	1055.7	-0.01%	4.39%
SECOND MARKET	863.8	864.6	0.10%	3.97%

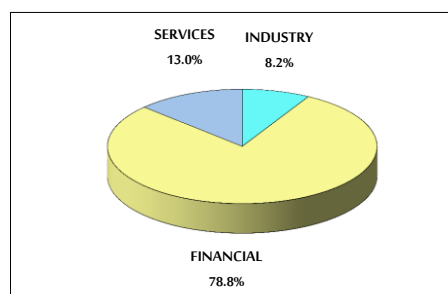
8- MARKET CAPITALIZATION (JD)

ASE MARKET CAPITALIZATION	16,490,046,502	16,519,876,205	0.18%	2.46%
---------------------------	----------------	----------------	-------	-------

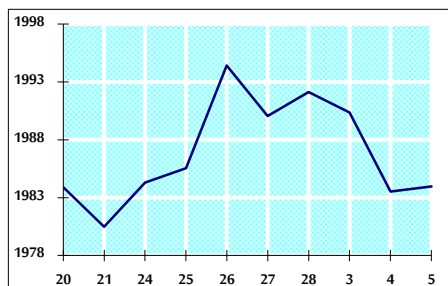
VALUE TRADED FROM 20/2 TO 5/3/2019



VALUE TRADED BY SECTOR TUESDAY 5/3/2019



GENERAL FREE FLOAT PRICE INDEX FROM 20/2 TO 5/3/2019



GENERAL PRICE INDEX FROM 20/2 TO 5/3/2019

