

Daily Summary for Amman Stock Exchange

1- VALUE TRADED (JD)

	2018	2019	NET CHANGE	CHANGE (%)
Daily	4,551,999	4,298,200	-253,799	-5.58%
Cumulative(1/9-3/9)	11,279,970	16,865,789	5,585,819	49.52%
Cumulative(2/1-3/9)	1,089,504,865	942,660,164	-146,844,701	-13.48%

2- NO. OF SHARES TRADED

	2018	2019	NET CHANGE	CHANGE (%)
Daily	4,617,372	5,137,820	520,448	11.27%
Cumulative(1/9-3/9)	11,224,982	18,182,654	6,957,672	61.98%
Cumulative(2/1-3/9)	762,061,804	796,046,654	33,984,850	4.46%

3- NO. OF TRANSACTIONS

	2018	2019	NET CHANGE	CHANGE (%)
Daily	2,230	2,358	128	5.74%
Cumulative(1/9-3/9)	6,027	7,364	1,337	22.18%
Cumulative(2/1-3/9)	340,957	347,299	6,342	1.86%

4- SOME FINANCIAL RATIOS FOR THE ASE (3/9/2019)

SECTOR	P/E	P/BV	DIVIDEND YIELD (%)	TURNOVER (%)
FINANCIAL	10.974	0.982	5.861	0.064
SERVICES	16.400	1.143	5.345	0.080
INDUSTRY	19.493	1.312	4.039	0.123
OVERALL	11.756	1.078	5.671	0.076

5- STOCK PRICE INDEX WEIGHTED BY FREE FLOAT MARKET CAPITALIZATION (1999=1000)

	MONDAY 02/09/2019	TUESDAY 03/09/2019	% CHANGE	
			DAY BEFORE	YTD
GENERAL	1817.4	1819.8	0.14%	-4.66%
FINANCIAL	2462.1	2470.9	0.36%	-6.85%
SERVICES	1302.0	1302.0	0.00%	1.74%
INDUSTRY	1805.2	1798.9	-0.35%	-4.45%

6- STOCK PRICE INDEX WEIGHTED BY MARKET CAPITALIZATION (1991=1000)

	MONDAY 02/09/2019	TUESDAY 03/09/2019	% CHANGE	
			DAY BEFORE	YTD
GENERAL	3518.7	3524.6	0.17%	-7.18%
BANKS	7205.8	7246.1	0.56%	-12.13%
INSURANCE	1332.4	1330.3	-0.16%	-3.36%
SERVICES	750.3	751.4	0.15%	-5.69%
INDUSTRY	2496.7	2476.5	-0.81%	7.14%

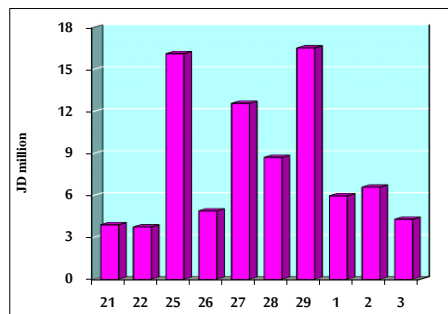
7- STOCK PRICE MARKET INDEX WEIGHTED BY FREE FLOAT MARKET CAP. (2012=1000)

	MONDAY 02/09/2019	TUESDAY 03/09/2019	% CHANGE	
			DAY BEFORE	YTD
FIRST MARKET	956.4	958.5	0.23%	-5.22%
SECOND MARKET	843.5	840.3	-0.39%	1.04%

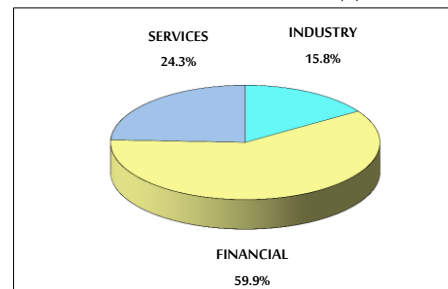
8- MARKET CAPITALIZATION (JD)

ASE MARKET CAPITALIZATION	14,963,616,320	14,989,024,057	0.17%	-7.03%
---------------------------	----------------	----------------	-------	--------

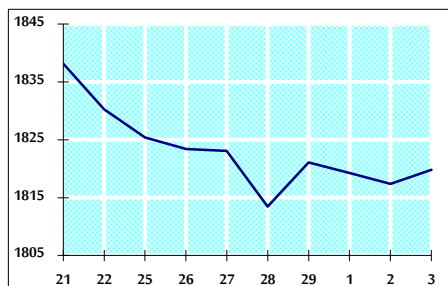
VALUE TRADED FROM 21/8 TO 3/9/2019



VALUE TRADED BY SECTOR TUESDAY 3/9/2019



GENERAL FREE FLOAT PRICE INDEX FROM 21/8 TO 3/9/2019



GENERAL PRICE INDEX FROM 21/8 TO 3/9/2019

