

Daily Summary for Amman Stock Exchange

VALUE TRADED (JD)

	2020	2021	NET CHANGE	CHANGE (%)
Daily	6,448,540	7,266,136	817,596	12.68%
Cumulative(1/2-24/2)	103,507,942	119,117,163	15,609,221	15.08%
Cumulative(3/1-24/2)	208,537,799	331,206,671	122,668,872	58.82%

NO. OF SHARES TRADED

	2020	2021	NET CHANGE	CHANGE (%)
Daily	5,393,806	6,634,674	1,240,868	23.01%
Cumulative(1/2-24/2)	96,696,573	113,504,696	16,808,123	17.38%
Cumulative(3/1-24/2)	189,795,177	313,155,925	123,360,748	65.00%

NO. OF TRANSACTIONS

	2020	2021	NET CHANGE	CHANGE (%)
Daily	1,887	2,404	517	27.40%
Cumulative(1/2-24/2)	38,372	52,176	13,804	35.97%
Cumulative(3/1-24/2)	82,526	117,312	34,786	42.15%

SOME FINANCIAL RATIOS FOR THE ASE (24/2/2021)

SECTOR	P/E	P/BV	DIVIDEND YIELD (%)	TURNOVER (%)
FINANCIAL	21.762	0.750	2.309	0.053
SERVICES	12.256	1.069	4.926	0.242
INDUSTRY	18.787	1.487	3.319	0.151
OVERALL	18.366	0.891	3.094	0.104

STOCK PRICE INDEX WEIGHTED BY FREE FLOAT MARKET CAPITALIZATION (1999=1000)

	TUESDAY 23/02/2021	WEDNESDAY 24/02/2021	% CHANGE	
			DAY BEFORE	YTD
GENERAL	1749.9	1747.4	-0.14%	5.44%
FINANCIAL	2244.3	2252.2	0.35%	3.71%
SERVICES	1177.7	1173.8	-0.33%	2.25%
INDUSTRY	2530.0	2478.1	-2.05%	16.91%

STOCK PRICE INDEX WEIGHTED BY FREE FLOAT MARKET CAPITALIZATION ASE20 (2014=1000)

	858.2	856.4	-0.20%	6.19%
--	-------	-------	--------	-------

STOCK PRICE INDEX WEIGHTED BY MARKET CAPITALIZATION (1991=1000)

	TUESDAY 23/02/2021	WEDNESDAY 24/02/2021	% CHANGE	
			DAY BEFORE	YTD
GENERAL	3256.2	3232.5	-0.73%	6.00%
BANKS	5507.7	5534.8	0.49%	2.29%
INSURANCE	1271.6	1271.5	-0.01%	-2.88%
SERVICES	718.0	718.7	0.09%	2.05%
INDUSTRY	3406.9	3291.0	-3.40%	16.78%

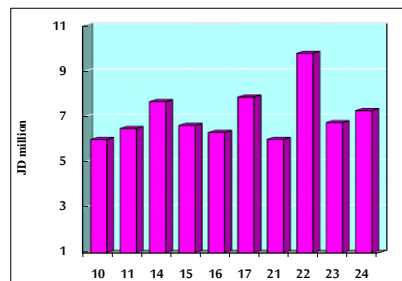
STOCK PRICE MARKET INDEX WEIGHTED BY FREE FLOAT MARKET CAP. (2012=1000)

	TUESDAY 23/02/2021	WEDNESDAY 24/02/2021	% CHANGE	
			DAY BEFORE	YTD
FIRST MARKET	920.8	918.8	-0.21%	5.81%
SECOND MARKET	908.3	908.7	0.04%	4.28%

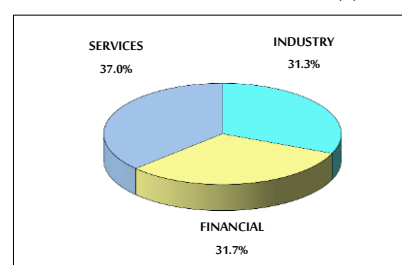
MARKET CAPITALIZATION (JD)

	13,667,256,069	13,581,463,224	-0.63%	5.22%
--	----------------	----------------	--------	-------

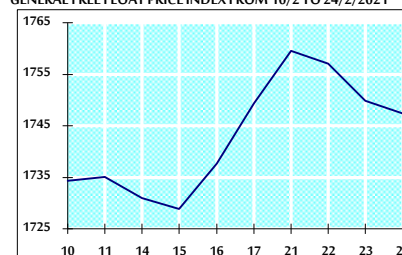
VALUE TRADED FROM 10/2 TO 24/2/2021



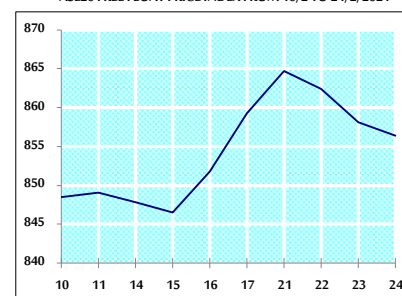
VALUE TRADED BY SECTOR WEDNESDAY 24/2/2021



GENERAL FREE FLOAT PRICE INDEX FROM 10/2 TO 24/2/2021



ASE20 FREE FLOAT PRICE INDEX FROM 10/2 TO 24/2/2021



GENERAL PRICE INDEX FROM 10/2 TO 24/2/2021

