

Daily Summary for Amman Stock Exchange

VALUE TRADED (JD)

	2020	2021	NET CHANGE	CHANGE (%)
Daily	4,902,851	8,237,773	3,334,922	68.02%
Cumulative(1/2-25/2)	108,410,793	127,354,936	18,944,143	17.47%
Cumulative(3/1-25/2)	213,440,650	339,444,444	126,003,794	59.03%

NO. OF SHARES TRADED

	2020	2021	NET CHANGE	CHANGE (%)
Daily	6,910,841	7,421,647	510,806	7.39%
Cumulative(1/2-25/2)	103,607,414	120,926,343	17,318,929	16.72%
Cumulative(3/1-25/2)	196,706,018	320,577,572	123,871,554	62.97%

NO. OF TRANSACTIONS

	2020	2021	NET CHANGE	CHANGE (%)
Daily	1,917	3,088	1,171	61.09%
Cumulative(1/2-25/2)	40,289	55,264	14,975	37.17%
Cumulative(3/1-25/2)	84,443	120,400	35,957	42.58%

SOME FINANCIAL RATIOS FOR THE ASE (25/2/2021)

SECTOR	P/E	P/BV	DIVIDEND YIELD (%)	TURNOVER (%)
FINANCIAL	21.639	0.746	2.322	0.084
SERVICES	12.341	1.077	4.892	0.241
INDUSTRY	18.191	1.440	3.427	0.091
OVERALL	18.158	0.881	3.130	0.116

STOCK PRICE INDEX WEIGHTED BY FREE FLOAT MARKET CAPITALIZATION (1999=1000)

	WEDNESDAY 24/02/2021	THURSDAY 25/02/2021	% CHANGE	
			DAY BEFORE	YTD
GENERAL	1747.4	1745.9	-0.09%	5.35%
FINANCIAL	2252.2	2242.9	-0.41%	3.28%
SERVICES	1173.8	1192.7	1.61%	3.89%
INDUSTRY	2478.1	2440.3	-1.52%	15.13%

STOCK PRICE INDEX WEIGHTED BY FREE FLOAT MARKET CAPITALIZATION ASE20 (2014=1000)

	856.4	854.9	-0.17%	6.01%
--	-------	-------	--------	-------

STOCK PRICE INDEX WEIGHTED BY MARKET CAPITALIZATION (1991=1000)

	WEDNESDAY 24/02/2021	THURSDAY 25/02/2021	% CHANGE	
			DAY BEFORE	YTD
GENERAL	3232.5	3195.9	-1.13%	4.80%
BANKS	5534.8	5501.3	-0.61%	1.67%
INSURANCE	1271.5	1270.8	-0.05%	-2.93%
SERVICES	718.7	717.4	-0.17%	1.87%
INDUSTRY	3291.0	3203.2	-2.67%	13.67%

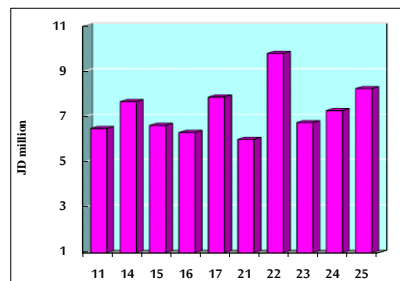
STOCK PRICE MARKET INDEX WEIGHTED BY FREE FLOAT MARKET CAP. (2012=1000)

	WEDNESDAY 24/02/2021	THURSDAY 25/02/2021	% CHANGE	
			DAY BEFORE	YTD
FIRST MARKET	918.8	917.8	-0.11%	5.69%
SECOND MARKET	908.7	909.6	0.11%	4.39%

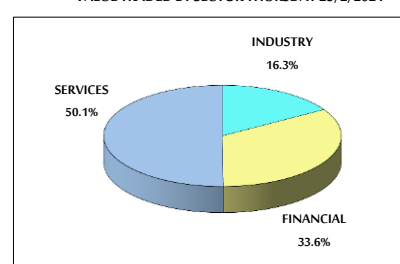
MARKET CAPITALIZATION (JD)

	13,581,463,224	13,451,671,222	-0.96%	4.21%
--	----------------	----------------	--------	-------

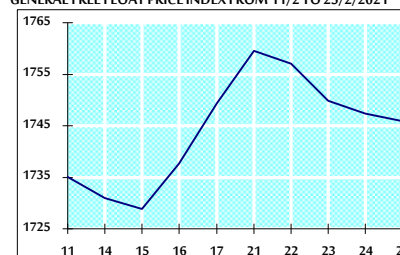
VALUE TRADED FROM 11/2 TO 25/2/2021



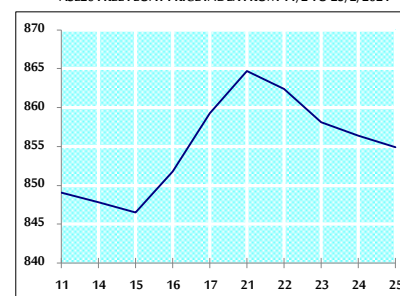
VALUE TRADED BY SECTOR THURSDAY 25/2/2021



GENERAL FREE FLOAT PRICE INDEX FROM 11/2 TO 25/2/2021



ASE20 FREE FLOAT PRICE INDEX FROM 11/2 TO 25/2/2021



GENERAL PRICE INDEX FROM 11/2 TO 25/2/2021

