

Daily Summary for Amman Stock Exchange

VALUE TRADED (JD)

	2020	2021	NET CHANGE	CHANGE (%)
Daily	4,826,778	8,253,239	3,426,461	70.99%
Cumulative(1/3-9/3)	37,315,665	50,396,999	13,081,334	35.06%
Cumulative(3/1-9/3)	264,636,053	398,891,877	134,255,824	50.73%

NO. OF SHARES TRADED

	2020	2021	NET CHANGE	CHANGE (%)
Daily	4,790,369	7,138,884	2,348,515	49.03%
Cumulative(1/3-9/3)	35,172,674	44,863,229	9,690,555	27.55%
Cumulative(3/1-9/3)	244,091,399	372,942,006	128,850,607	52.79%

NO. OF TRANSACTIONS

	2020	2021	NET CHANGE	CHANGE (%)
Daily	2,483	2,952	469	18.89%
Cumulative(1/3-9/3)	15,162	20,165	5,003	33.00%
Cumulative(3/1-9/3)	104,540	143,825	39,285	37.58%

SOME FINANCIAL RATIOS FOR THE ASE (9/3/2021)

SECTOR	P/E	P/BV	DIVIDEND YIELD (%)	TURNOVER (%)
FINANCIAL	21.210	0.738	2.344	0.073
SERVICES	12.045	1.067	4.937	0.136
INDUSTRY	19.845	1.574	3.159	0.283
OVERALL	18.332	0.897	3.082	0.112

STOCK PRICE INDEX WEIGHTED BY FREE FLOAT MARKET CAPITALIZATION (1999=1000)

	MONDAY 08/03/2021	TUESDAY 09/03/2021	% CHANGE	
			DAY BEFORE	YTD
GENERAL	1773.7	1751.9	-1.23%	5.71%
FINANCIAL	2233.3	2222.7	-0.48%	2.35%
SERVICES	1220.2	1200.6	-1.61%	4.58%
INDUSTRY	2631.3	2549.5	-3.11%	20.28%

STOCK PRICE INDEX WEIGHTED BY FREE FLOAT MARKET CAPITALIZATION ASE20 (2014=1000)

	873.8	862.2	-1.33%	6.91%
--	-------	-------	--------	-------

STOCK PRICE INDEX WEIGHTED BY MARKET CAPITALIZATION (1991=1000)

	MONDAY 08/03/2021	TUESDAY 09/03/2021	% CHANGE	
			DAY BEFORE	YTD
GENERAL	3313.4	3254.5	-1.78%	6.72%
BANKS	5476.8	5443.7	-0.60%	0.61%
INSURANCE	1276.1	1274.5	-0.13%	-2.65%
SERVICES	709.6	703.4	-0.87%	-0.12%
INDUSTRY	3663.0	3507.9	-4.23%	24.48%

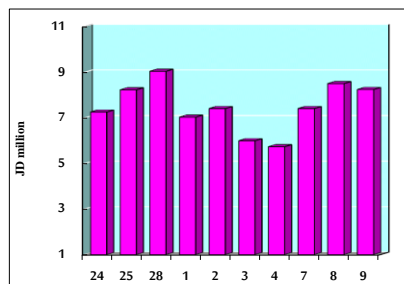
STOCK PRICE MARKET INDEX WEIGHTED BY FREE FLOAT MARKET CAP. (2012=1000)

	MONDAY 08/03/2021	TUESDAY 09/03/2021	% CHANGE	
			DAY BEFORE	YTD
FIRST MARKET	936.0	924.2	-1.25%	6.43%
SECOND MARKET	906.0	894.8	-1.24%	2.69%

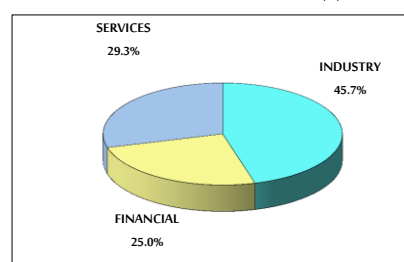
MARKET CAPITALIZATION (JD)

	13,867,312,623	13,657,544,388	-1.51%	5.81%
--	----------------	----------------	--------	-------

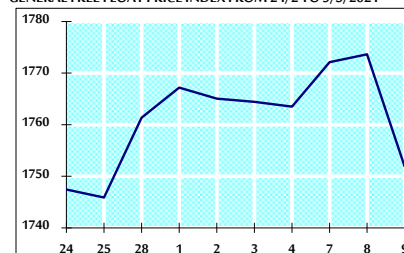
VALUE TRADED FROM 24/2 TO 9/3/2021



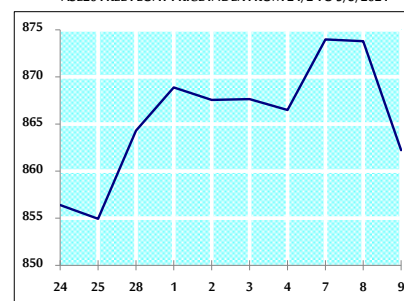
VALUE TRADED BY SECTOR TUESDAY 9/3/2021



GENERAL FREE FLOAT PRICE INDEX FROM 24/2 TO 9/3/2021



ASE20 FREE FLOAT PRICE INDEX FROM 24/2 TO 9/3/2021



GENERAL PRICE INDEX FROM 24/2 TO 9/3/2021

