

Daily Summary for Amman Stock Exchange

VALUE TRADED (JD)

	2020	2021	NET CHANGE	CHANGE (%)
Daily	3,425,236	7,301,082	3,875,846	113.16%
Cumulative(1/3-11/3)	44,332,830	63,221,345	18,888,515	42.61%
Cumulative(3/1-11/3)	271,653,218	411,716,223	140,063,005	51.56%

NO. OF SHARES TRADED

	2020	2021	NET CHANGE	CHANGE (%)
Daily	3,374,925	5,229,509	1,854,584	54.95%
Cumulative(1/3-11/3)	42,404,920	54,755,175	12,350,255	29.12%
Cumulative(3/1-11/3)	251,323,645	382,833,952	131,510,307	52.33%

NO. OF TRANSACTIONS

	2020	2021	NET CHANGE	CHANGE (%)
Daily	2,147	2,651	504	23.47%
Cumulative(1/3-11/3)	19,312	25,502	6,190	32.05%
Cumulative(3/1-11/3)	108,690	149,162	40,472	37.24%

SOME FINANCIAL RATIOS FOR THE ASE (11/3/2021)

SECTOR	P/E	P/BV	DIVIDEND YIELD (%)	TURNOVER (%)
FINANCIAL	21.086	0.734	2.349	0.056
SERVICES	12.067	1.069	4.928	0.141
INDUSTRY	20.472	1.624	3.063	0.128
OVERALL	18.440	0.902	3.058	0.082

STOCK PRICE INDEX WEIGHTED BY FREE FLOAT MARKET CAPITALIZATION (1999=1000)

	WEDNESDAY 10/03/2021	THURSDAY 11/03/2021	% CHANGE	
			DAY BEFORE	YTD
GENERAL	1753.1	1751.4	-0.10%	5.68%
FINANCIAL	2213.7	2206.5	-0.32%	1.60%
SERVICES	1204.6	1200.3	-0.36%	4.55%
INDUSTRY	2591.1	2625.9	1.34%	23.88%

STOCK PRICE INDEX WEIGHTED BY FREE FLOAT MARKET CAPITALIZATION ASE20 (2014=1000)

	862.3	862.2	-0.02%	6.90%
--	-------	-------	--------	-------

STOCK PRICE INDEX WEIGHTED BY MARKET CAPITALIZATION (1991=1000)

	WEDNESDAY 10/03/2021	THURSDAY 11/03/2021	% CHANGE	
			DAY BEFORE	YTD
GENERAL	3267.4	3274.1	0.21%	7.36%
BANKS	5426.6	5404.0	-0.42%	-0.12%
INSURANCE	1267.9	1269.0	0.09%	-3.07%
SERVICES	707.2	707.8	0.09%	0.50%
INDUSTRY	3563.7	3611.6	1.34%	28.16%

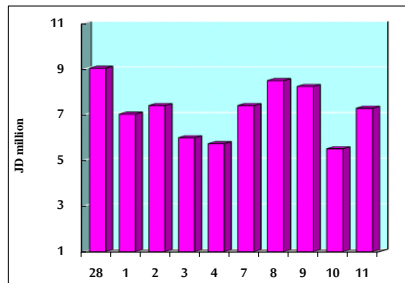
STOCK PRICE MARKET INDEX WEIGHTED BY FREE FLOAT MARKET CAP. (2012=1000)

	WEDNESDAY 10/03/2021	THURSDAY 11/03/2021	% CHANGE	
			DAY BEFORE	YTD
FIRST MARKET	924.1	923.6	-0.05%	6.37%
SECOND MARKET	901.0	898.0	-0.33%	3.05%

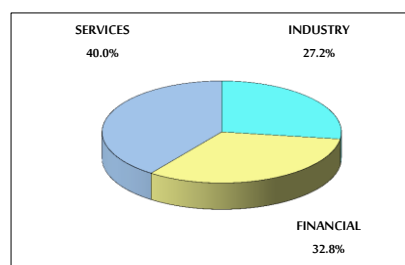
MARKET CAPITALIZATION (JD)

	13,702,177,373	13,725,758,743	0.17%	6.34%
--	----------------	----------------	-------	-------

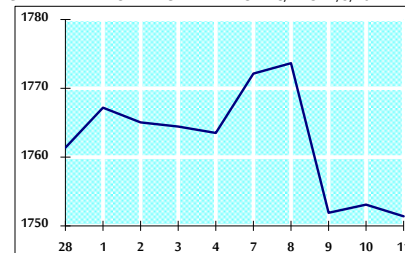
VALUE TRADED FROM 28/2 TO 11/3/2021



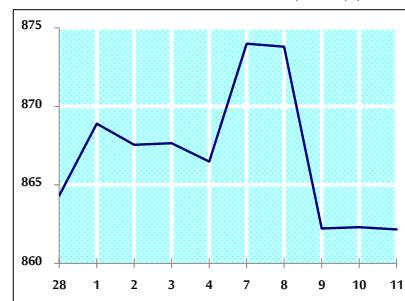
VALUE TRADED BY SECTOR THURSDAY 11/3/2021



GENERAL FREE FLOAT PRICE INDEX FROM 28/2 TO 11/3/2021



ASE20 FREE FLOAT PRICE INDEX FROM 28/2 TO 11/3/2021



GENERAL PRICE INDEX FROM 28/2 TO 11/3/2021

