

## Daily Summary for Amman Stock Exchange

### VALUE TRADED (JD)

	2020	2021	NET CHANGE	CHANGE ( % )
Daily	3,492,778	10,527,098	7,034,320	201.40%
Cumulative(1/3-15/3)	52,517,739	80,832,668	28,314,929	53.91%
Cumulative(3/1-15/3)	279,838,127	429,327,546	149,489,419	53.42%

### NO. OF SHARES TRADED

	2020	2021	NET CHANGE	CHANGE ( % )
Daily	3,049,785	8,433,740	5,383,955	176.54%
Cumulative(1/3-15/3)	49,409,668	76,683,736	27,274,068	55.20%
Cumulative(3/1-15/3)	258,328,393	404,762,513	146,434,120	56.69%

### NO. OF TRANSACTIONS

	2020	2021	NET CHANGE	CHANGE ( % )
Daily	1,784	2,197	413	23.15%
Cumulative(1/3-15/3)	23,383	29,863	6,480	27.71%
Cumulative(3/1-15/3)	112,761	153,523	40,762	36.15%

### SOME FINANCIAL RATIOS FOR THE ASE (15/3/2021)

SECTOR	P/E	P/BV	DIVIDEND YIELD (%)	TURNOVER (%)
FINANCIAL	21.003	0.733	2.367	0.042
SERVICES	12.386	1.064	4.967	0.453
INDUSTRY	19.373	1.537	3.236	0.095
OVERALL	18.141	0.886	3.116	0.133

### STOCK PRICE INDEX WEIGHTED BY FREE FLOAT MARKET CAPITALIZATION (1999=1000)

	SUNDAY 14/03/2021	MONDAY 15/03/2021	% CHANGE	
			DAY BEFORE	YTD
GENERAL	1748.0	1738.5	-0.54%	4.90%
FINANCIAL	2207.9	2206.2	-0.08%	1.59%
SERVICES	1197.7	1188.2	-0.79%	3.50%
INDUSTRY	2594.6	2541.6	-2.04%	19.90%

### STOCK PRICE INDEX WEIGHTED BY FREE FLOAT MARKET CAPITALIZATION ASE20 (2014=1000)

	859.8	854.0	-0.67%	5.90%
--	-------	-------	--------	-------

### STOCK PRICE INDEX WEIGHTED BY MARKET CAPITALIZATION (1991=1000)

	SUNDAY 14/03/2021	MONDAY 15/03/2021	% CHANGE	
			DAY BEFORE	YTD
GENERAL	3248.3	3215.4	-1.01%	5.44%
BANKS	5409.1	5399.5	-0.18%	-0.21%
INSURANCE	1267.0	1257.6	-0.75%	-3.94%
SERVICES	708.9	706.8	-0.30%	0.36%
INDUSTRY	3512.3	3412.3	-2.85%	21.09%

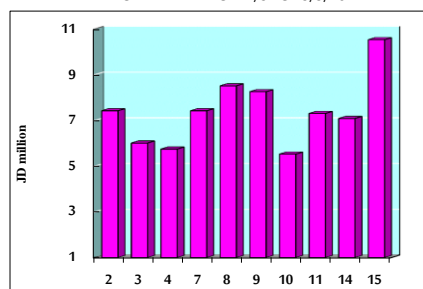
### STOCK PRICE MARKET INDEX WEIGHTED BY FREE FLOAT MARKET CAP. (2012=1000)

	SUNDAY 14/03/2021	MONDAY 15/03/2021	% CHANGE	
			DAY BEFORE	YTD
FIRST MARKET	921.4	915.6	-0.63%	5.44%
SECOND MARKET	897.7	897.3	-0.05%	2.97%

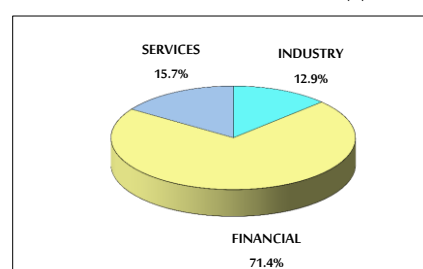
### MARKET CAPITALIZATION (JD)

	13,633,179,655	13,513,407,003	-0.88%	4.69%
--	----------------	----------------	--------	-------

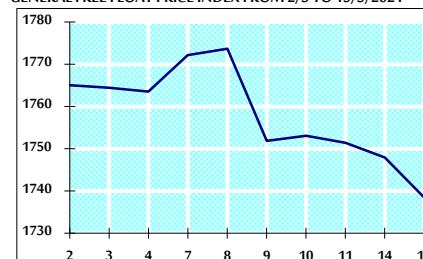
### VALUE TRADED FROM 2/3 TO 15/3/2021



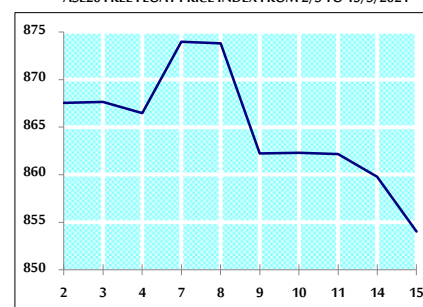
### VALUE TRADED BY SECTOR MONDAY 15/3/2021



### GENERAL FREE FLOAT PRICE INDEX FROM 2/3 TO 15/3/2021



### ASE20 FREE FLOAT PRICE INDEX FROM 2/3 TO 15/3/2021



### GENERAL PRICE INDEX FROM 2/3 TO 15/3/2021

