

Daily Summary for Amman Stock Exchange

VALUE TRADED (JD)

	2020	2021	NET CHANGE	CHANGE (%)
Daily	3,532,186	4,537,223	1,005,037	28.45%
Cumulative (1/8-23/8)	81,131,999	92,915,885	11,783,886	14.52%
Cumulative (3/1-23/8)	598,239,153	1,346,333,788	748,094,635	125.05%

NO. OF SHARES TRADED

	2020	2021	NET CHANGE	CHANGE (%)
Daily	4,569,015	4,945,631	376,616	8.24%
Cumulative (1/8-23/8)	95,925,603	71,922,665	-24,002,938	-25.02%
Cumulative (3/1-23/8)	615,092,027	1,061,778,963	446,686,936	72.62%

NO. OF TRANSACTIONS

	2020	2021	NET CHANGE	CHANGE (%)
Daily	1,878	2,334	456	24.28%
Cumulative (1/8-23/8)	34,775	42,850	8,075	23.22%
Cumulative (3/1-23/8)	241,184	524,626	283,442	117.52%

SOME FINANCIAL RATIOS FOR THE ASE (23/8/2021)

SECTOR	P/E	P/BV	DIVIDEND YIELD (%)	TURNOVER (%)
FINANCIAL	33.768	0.839	3.389	0.084
SERVICES	-	1.220	2.274	0.055
INDUSTRY	26.302	2.105	2.727	0.092
OVERALL	36.784	1.079	3.053	0.079

STOCK PRICE INDEX WEIGHTED BY FREE FLOAT MARKET CAPITALIZATION (1999=1000)

	SUNDAY 22/08/2021	MONDAY 23/08/2021	% CHANGE	
			DAY BEFORE	YTD
GENERAL	2015.8	2011.6	-0.21%	21.38%
FINANCIAL	2468.2	2464.9	-0.13%	13.51%
SERVICES	1283.8	1280.9	-0.23%	11.58%
INDUSTRY	3495.2	3482.8	-0.35%	64.31%

STOCK PRICE INDEX WEIGHTED BY FREE FLOAT MARKET CAPITALIZATION ASE20 (2014=1000)

	1025.0	1022.3	-0.26%	26.75%
--	--------	--------	--------	--------

STOCK PRICE INDEX WEIGHTED BY MARKET CAPITALIZATION (1991=1000)

	SUNDAY 22/08/2021	MONDAY 23/08/2021	% CHANGE	
			DAY BEFORE	YTD
GENERAL	3902.8	3899.8	-0.08%	27.88%
BANKS	6378.6	6369.6	-0.14%	17.72%
INSURANCE	1255.9	1253.8	-0.17%	-4.23%
SERVICES	762.3	768.6	0.83%	9.14%
INDUSTRY	4610.2	4594.6	-0.34%	63.04%

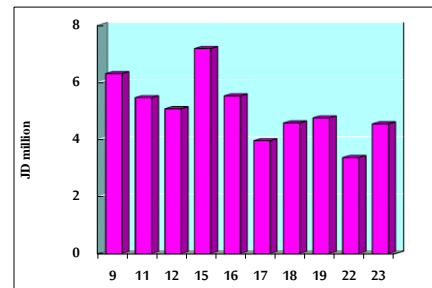
STOCK PRICE MARKET INDEX WEIGHTED BY FREE FLOAT MARKET CAP. (2012=1000)

	SUNDAY 22/08/2021	MONDAY 23/08/2021	% CHANGE	
			DAY BEFORE	YTD
FIRST MARKET	1083.8	1081.5	-0.21%	24.54%
SECOND MARKET	915.7	915.4	-0.03%	5.06%

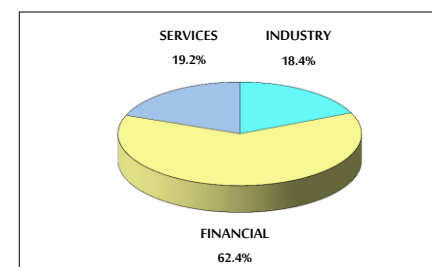
MARKET CAPITALIZATION (JD)

	15,106,377,623	15,097,540,878	-0.06%	16.96%
--	----------------	----------------	--------	--------

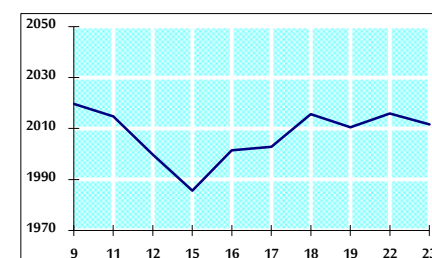
VALUE TRADED FROM 9/8 TO 23/8/2021



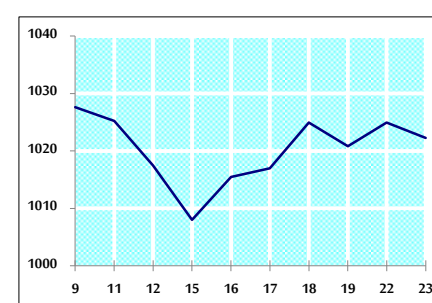
VALUE TRADED BY SECTOR MONDAY 23/8/2021



GENERAL FREE FLOAT PRICE INDEX FROM 9/8 TO 23/8/2021



ASE20 FREE FLOAT PRICE INDEX FROM 9/8 TO 23/8/2021



GENERAL PRICE INDEX FROM 9/8 TO 23/8/2021

