

## Daily Summary for Amman Stock Exchange

### VALUE TRADED (JD)

	2020	2021	NET CHANGE	CHANGE (%)
Daily	4,096,489	4,493,890	397,401	9.70%
Cumulative (1/8-25/8)	88,774,859	102,078,152	13,303,293	14.99%
Cumulative (3/1-25/8)	605,882,013	1,355,496,055	749,614,042	123.72%

### NO. OF SHARES TRADED

	2020	2021	NET CHANGE	CHANGE (%)
Daily	5,015,110	3,838,557	-1,176,553	-23.46%
Cumulative (1/8-25/8)	104,841,226	80,192,716	-24,648,510	-23.51%
Cumulative (3/1-25/8)	624,007,650	1,070,049,014	446,041,364	71.48%

### NO. OF TRANSACTIONS

	2020	2021	NET CHANGE	CHANGE (%)
Daily	2,234	2,734	500	22.38%
Cumulative (1/8-25/8)	38,782	48,193	9,411	24.27%
Cumulative (3/1-25/8)	245,191	529,969	284,778	116.15%

### SOME FINANCIAL RATIOS FOR THE ASE (25/8/2021)

SECTOR	P/E	P/BV	DIVIDEND YIELD (%)	TURNOVER (%)
FINANCIAL	33.699	0.837	3.396	0.056
SERVICES	-	1.215	2.283	0.079
INDUSTRY	25.286	2.024	2.836	0.060
OVERALL	36.266	1.064	3.097	0.061

### STOCK PRICE INDEX WEIGHTED BY FREE FLOAT MARKET CAPITALIZATION (1999=1000)

	TUESDAY 24/08/2021	WEDNESDAY 25/08/2021	% CHANGE	
			DAY BEFORE	YTD
GENERAL	2006.8	2003.0	-0.19%	20.87%
FINANCIAL	2466.6	2470.1	0.14%	13.74%
SERVICES	1278.0	1278.6	0.04%	11.37%
INDUSTRY	3436.3	3385.9	-1.47%	59.73%

### STOCK PRICE INDEX WEIGHTED BY FREE FLOAT MARKET CAPITALIZATION ASE20 (2014=1000)

	1019.3	1016.3	-0.28%	26.02%
--	--------	--------	--------	--------

### STOCK PRICE INDEX WEIGHTED BY MARKET CAPITALIZATION (1991=1000)

	TUESDAY 24/08/2021	WEDNESDAY 25/08/2021	% CHANGE	
			DAY BEFORE	YTD
GENERAL	3879.6	3845.4	-0.88%	26.10%
BANKS	6375.4	6350.7	-0.39%	17.38%
INSURANCE	1256.1	1256.5	0.03%	-4.02%
SERVICES	766.3	766.5	0.03%	8.84%
INDUSTRY	4521.0	4426.6	-2.09%	57.08%

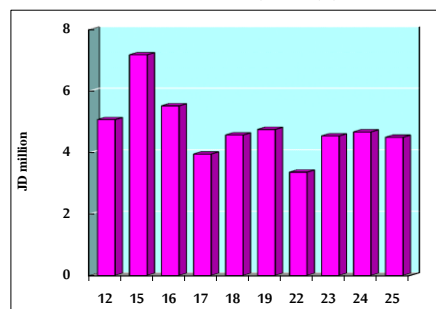
### STOCK PRICE MARKET INDEX WEIGHTED BY FREE FLOAT MARKET CAP. (2012=1000)

	TUESDAY 24/08/2021	WEDNESDAY 25/08/2021	% CHANGE	
			DAY BEFORE	YTD
FIRST MARKET	1078.2	1075.6	-0.25%	23.86%
SECOND MARKET	916.7	918.4	0.19%	5.40%

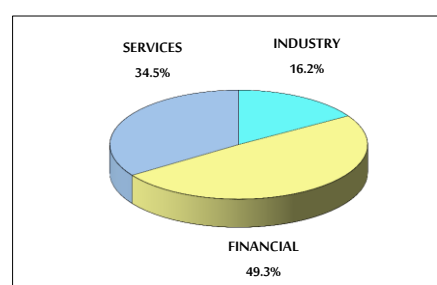
### MARKET CAPITALIZATION (JD)

	15,023,593,119	14,906,045,849	-0.78%	15.48%
--	----------------	----------------	--------	--------

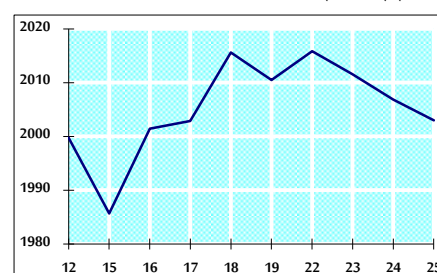
### VALUE TRADED FROM 12/8 TO 25/8/2021



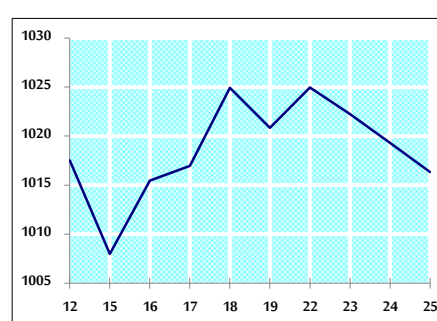
### VALUE TRADED BY SECTOR WEDNESDAY 25/8/2021



### GENERAL FREE FLOAT PRICE INDEX FROM 12/8 TO 25/8/2021



### ASE20 FREE FLOAT PRICE INDEX FROM 12/8 TO 25/8/2021



### GENERAL PRICE INDEX FROM 12/8 TO 25/8/2021

