

Daily Summary for Amman Stock Exchange

VALUE TRADED (JD)

	2020	2021	NET CHANGE	CHANGE (%)
Daily	4,347,373	7,172,066	2,824,693	64.97%
Cumulative (1/8-15/8)	51,716,987	66,233,984	14,516,997	28.07%
Cumulative (3/1-15/8)	568,824,141	1,319,651,887	750,827,746	132.00%

NO. OF SHARES TRADED

	2020	2021	NET CHANGE	CHANGE (%)
Daily	4,509,300	5,895,654	1,386,354	30.74%
Cumulative (1/8-15/8)	57,705,321	48,479,899	-9,225,422	-15.99%
Cumulative (3/1-15/8)	576,871,745	1,038,336,197	461,464,452	79.99%

NO. OF TRANSACTIONS

	2020	2021	NET CHANGE	CHANGE (%)
Daily	1,946	2,842	896	46.04%
Cumulative (1/8-15/8)	21,237	26,813	5,576	26.26%
Cumulative (3/1-15/8)	227,646	508,589	280,943	123.41%

SOME FINANCIAL RATIOS FOR THE ASE (15/8/2021)

SECTOR	P/E	P/BV	DIVIDEND YIELD (%)	TURNOVER (%)
FINANCIAL	33.129	0.823	3.454	0.106
SERVICES	-	1.213	2.287	0.081
INDUSTRY	25.183	2.015	2.848	0.043
OVERALL	35.843	1.051	3.133	0.094

STOCK PRICE INDEX WEIGHTED BY FREE FLOAT MARKET CAPITALIZATION (1999=1000)

	THURSDAY 12/08/2021	SUNDAY 15/08/2021	% CHANGE	
			DAY BEFORE	YTD
GENERAL	1999.8	1985.7	-0.70%	19.82%
FINANCIAL	2457.0	2437.8	-0.78%	12.26%
SERVICES	1275.0	1288.1	1.03%	12.21%
INDUSTRY	3422.3	3337.1	-2.49%	57.43%

STOCK PRICE INDEX WEIGHTED BY FREE FLOAT MARKET CAPITALIZATION ASE20 (2014=1000)

	1017.5	1008.0	-0.93%	24.98%
--	--------	--------	--------	--------

STOCK PRICE INDEX WEIGHTED BY MARKET CAPITALIZATION (1991=1000)

	THURSDAY 12/08/2021	SUNDAY 15/08/2021	% CHANGE	
			DAY BEFORE	YTD
GENERAL	3863.3	3800.0	-1.64%	24.61%
BANKS	6358.2	6248.7	-1.72%	15.49%
INSURANCE	1245.6	1245.5	-0.01%	-4.86%
SERVICES	751.5	750.8	-0.10%	6.61%
INDUSTRY	4519.3	4422.0	-2.15%	56.92%

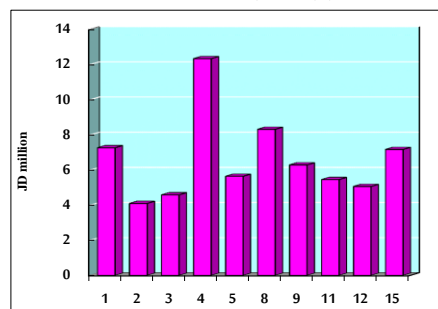
STOCK PRICE MARKET INDEX WEIGHTED BY FREE FLOAT MARKET CAP. (2012=1000)

	THURSDAY 12/08/2021	SUNDAY 15/08/2021	% CHANGE	
			DAY BEFORE	YTD
FIRST MARKET	1076.3	1067.0	-0.87%	22.87%
SECOND MARKET	903.4	902.6	-0.08%	3.59%

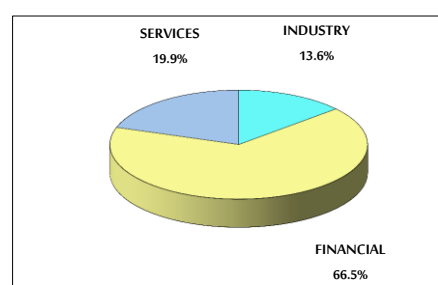
MARKET CAPITALIZATION (JD)

	14,954,880,210	14,732,610,048	-1.49%	14.14%
--	----------------	----------------	--------	--------

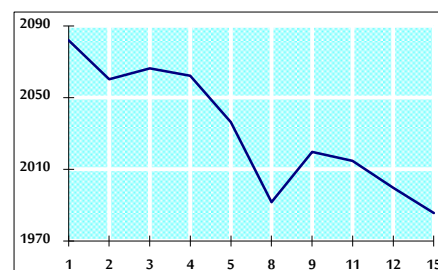
VALUE TRADED FROM 1/8 TO 15/8/2021



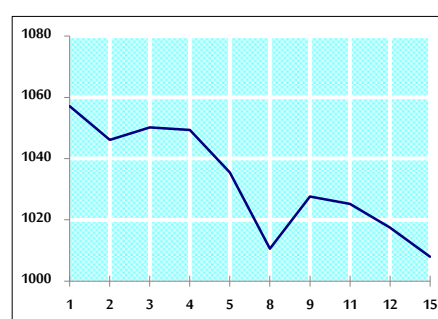
VALUE TRADED BY SECTOR SUNDAY 15/8/2021



GENERAL FREE FLOAT PRICE INDEX FROM 1/8 TO 15/8/2021



ASE20 FREE FLOAT PRICE INDEX FROM 1/8 TO 15/8/2021



GENERAL PRICE INDEX FROM 1/8 TO 15/8/2021

