

Daily Summary for Amman Stock Exchange

VALUE TRADED (JD)

	2020	2021	NET CHANGE	CHANGE (%)
Daily	3,509,026	5,626,020	2,116,994	60.33%
Cumulative (3/10-5/10)	11,617,667	18,999,360	7,381,693	63.54%
Cumulative (3/1-5/10)	722,678,575	1,567,451,814	844,773,239	116.89%

NO. OF SHARES TRADED

	2020	2021	NET CHANGE	CHANGE (%)
Daily	5,140,134	3,736,340	-1,403,794	-27.31%
Cumulative (3/10-5/10)	16,466,488	12,064,518	-4,401,970	-26.73%
Cumulative (3/1-5/10)	793,893,074	1,223,262,428	429,369,354	54.08%

NO. OF TRANSACTIONS

	2020	2021	NET CHANGE	CHANGE (%)
Daily	1,986	2,866	880	44.31%
Cumulative (3/10-5/10)	5,593	9,002	3,409	60.95%
Cumulative (3/1-5/10)	305,196	620,611	315,415	103.35%

SOME FINANCIAL RATIOS FOR THE ASE (5/10/2021)

SECTOR	P/E	P/BV	DIVIDEND YIELD (%)	TURNOVER (%)
FINANCIAL	34.472	0.856	3.324	0.045
SERVICES	-	1.245	2.296	0.096
INDUSTRY	29.001	2.173	2.577	0.082
OVERALL	37.373	1.115	2.979	0.059

STOCK PRICE INDEX WEIGHTED BY FREE FLOAT MARKET CAPITALIZATION (1999=1000)

	MONDAY 04/10/2021	TUESDAY 05/10/2021	% CHANGE	
			DAY BEFORE	YTD
GENERAL	2079.6	2085.1	0.26%	25.82%
FINANCIAL	2525.3	2528.2	0.12%	16.42%
SERVICES	1305.2	1309.7	0.35%	14.09%
INDUSTRY	3741.0	3761.3	0.54%	77.44%

STOCK PRICE INDEX WEIGHTED BY FREE FLOAT MARKET CAPITALIZATION ASE20 (2014=1000)

	1051.7	1055.2	0.33%	30.84%
--	--------	--------	-------	--------

STOCK PRICE INDEX WEIGHTED BY MARKET CAPITALIZATION (1991=1000)

	MONDAY 04/10/2021	TUESDAY 05/10/2021	% CHANGE	
			DAY BEFORE	YTD
GENERAL	4006.7	4011.0	0.11%	31.53%
BANKS	6444.7	6452.5	0.12%	19.26%
INSURANCE	1410.8	1391.0	-1.41%	6.25%
SERVICES	787.4	789.2	0.22%	12.06%
INDUSTRY	4807.3	4813.2	0.12%	70.80%

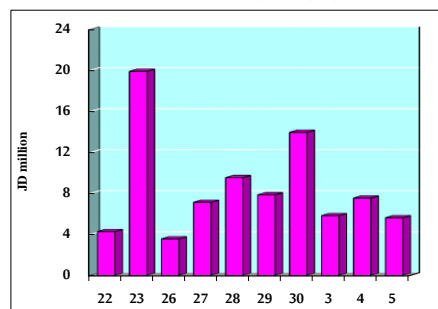
STOCK PRICE MARKET INDEX WEIGHTED BY FREE FLOAT MARKET CAP. (2012=1000)

	MONDAY 04/10/2021	TUESDAY 05/10/2021	% CHANGE	
			DAY BEFORE	YTD
FIRST MARKET	1119.6	1122.5	0.26%	29.27%
SECOND MARKET	934.0	936.2	0.24%	7.44%

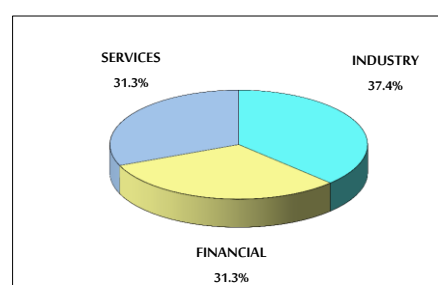
MARKET CAPITALIZATION (JD)

	15,492,018,404	15,506,921,739	0.10%	20.14%
--	----------------	----------------	-------	--------

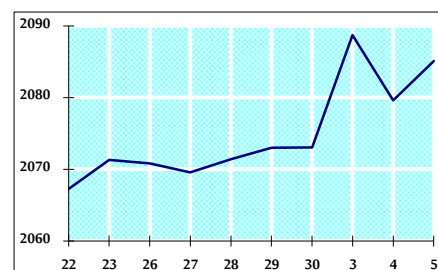
VALUE TRADED FROM 22/9 TO 5/10/2021



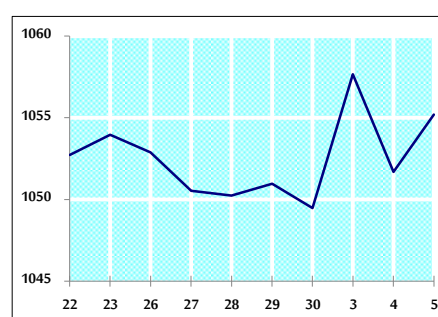
VALUE TRADED BY SECTOR TUESDAY 5/10/2021



GENERAL FREE FLOAT PRICE INDEX FROM 22/9 TO 5/10/2021



ASE20 FREE FLOAT PRICE INDEX FROM 22/9 TO 5/10/2021



GENERAL PRICE INDEX FROM 22/9 TO 5/10/2021

