

## Daily Summary for Amman Stock Exchange

### VALUE TRADED (JD)

	2021	2022	NET CHANGE	CHANGE (%)
Daily	7,419,577	7,455,514	35,937	0.48%
Cumulative (1/3-7/3)	33,632,510	26,530,564	-7,101,946	-21.12%
Cumulative (2/1-7/3)	382,127,388	252,951,242	-129,176,146	-33.80%

### NO. OF SHARES TRADED

	2021	2022	NET CHANGE	CHANGE (%)
Daily	5,966,541	4,712,455	-1,254,086	-21.02%
Cumulative (1/3-7/3)	31,003,618	21,011,170	-9,992,448	-32.23%
Cumulative (2/1-7/3)	359,082,395	196,848,065	-162,234,330	-45.18%

### NO. OF TRANSACTIONS

	2021	2022	NET CHANGE	CHANGE (%)
Daily	2,648	3,328	680	25.68%
Cumulative (1/3-7/3)	13,721	12,026	-1,695	-12.35%
Cumulative (2/1-7/3)	137,381	123,601	-13,780	-10.03%

### SOME FINANCIAL RATIOS FOR THE ASE (7/3/2022)

SECTOR	P/E	P/BV	DIVIDEND YIELD (%)	TURNOVER (%)
FINANCIAL	15.024	0.848	4.783	0.063
SERVICES	-	1.258	2.270	0.096
INDUSTRY	29.525	2.322	2.312	0.110
OVERALL	20.336	1.128	3.756	0.075

### STOCK PRICE INDEX WEIGHTED BY FREE FLOAT MARKET CAPITALIZATION (1999=1000)

	SUNDAY 06/03/2022	MONDAY 07/03/2022	% CHANGE	
			DAY BEFORE	YTD
GENERAL	2154.2	2179.8	1.19%	2.88%
FINANCIAL	2654.2	2664.7	0.40%	2.31%
SERVICES	1325.0	1329.7	0.35%	0.17%
INDUSTRY	3754.5	3924.1	4.52%	7.04%

### STOCK PRICE INDEX WEIGHTED BY FREE FLOAT MARKET CAPITALIZATION ASE20 (2014=1000)

	1112.5	1128.3	1.41%	5.02%
--	--------	--------	-------	-------

### STOCK PRICE INDEX WEIGHTED BY MARKET CAPITALIZATION (1991=1000)

	SUNDAY 06/03/2022	MONDAY 07/03/2022	% CHANGE	
			DAY BEFORE	YTD
GENERAL	4059.4	4131.2	1.77%	3.14%
BANKS	6577.4	6602.2	0.38%	0.55%
INSURANCE	1425.8	1384.7	-2.88%	4.24%
SERVICES	777.0	776.8	-0.03%	-0.71%
INDUSTRY	4875.2	5107.7	4.77%	8.66%

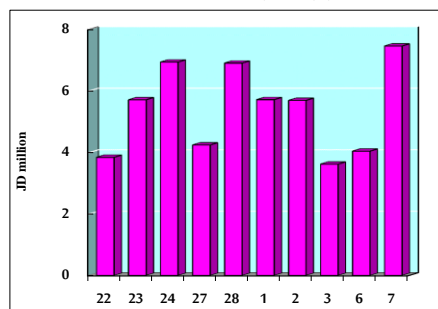
### STOCK PRICE MARKET INDEX WEIGHTED BY FREE FLOAT MARKET CAP. (2012=1000)

	SUNDAY 06/03/2022	MONDAY 07/03/2022	% CHANGE	
			DAY BEFORE	YTD
FIRST MARKET	1180.4	1195.4	1.27%	4.41%
SECOND MARKET	861.9	867.8	0.69%	-7.34%

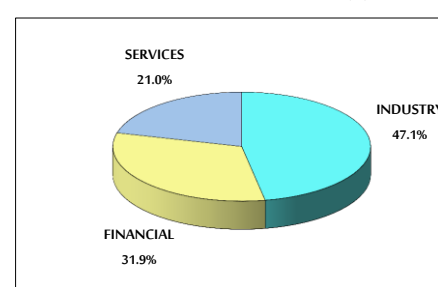
### MARKET CAPITALIZATION (JD)

	15,663,691,142	15,920,407,600	1.64%	2.74%
--	----------------	----------------	-------	-------

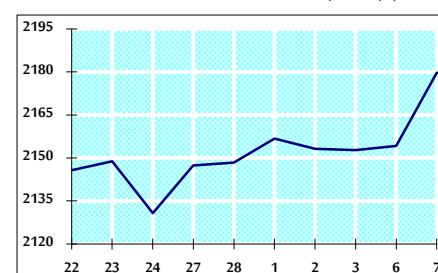
### VALUE TRADED FROM 22/2 TO 7/3/2022



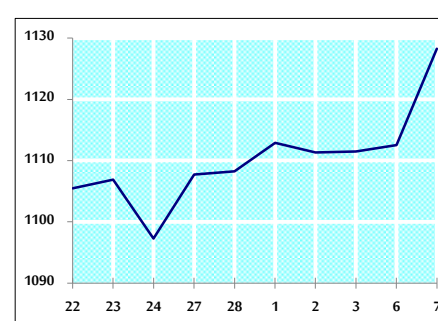
### VALUE TRADED BY SECTOR MONDAY 7/3/2022



### GENERAL FREE FLOAT PRICE INDEX FROM 22/2 TO 7/3/2022



### ASE20 FREE FLOAT PRICE INDEX FROM 22/2 TO 7/3/2022



### GENERAL PRICE INDEX FROM 22/2 TO 7/3/2022

