

Daily Summary for Amman Stock Exchange

VALUE TRADED (JD)

	2021	2022	NET CHANGE	CHANGE (%)
Daily	8,511,250	7,060,742	-1,450,508	-17.04%
Cumulative (1/3-8/3)	42,143,760	33,591,306	-8,552,454	-20.29%
Cumulative (2/1-8/3)	390,638,638	260,011,984	-130,626,654	-33.44%

NO. OF SHARES TRADED

	2021	2022	NET CHANGE	CHANGE (%)
Daily	6,720,727	3,977,247	-2,743,480	-40.82%
Cumulative (1/3-8/3)	37,724,345	24,988,417	-12,735,928	-33.76%
Cumulative (2/1-8/3)	365,803,122	200,825,312	-164,977,810	-45.10%

NO. OF TRANSACTIONS

	2021	2022	NET CHANGE	CHANGE (%)
Daily	3,492	2,988	-504	-14.43%
Cumulative (1/3-8/3)	17,213	15,014	-2,199	-12.78%
Cumulative (2/1-8/3)	140,873	126,589	-14,284	-10.14%

SOME FINANCIAL RATIOS FOR THE ASE (8/3/2022)

SECTOR	P/E	P/BV	DIVIDEND YIELD (%)	TURNOVER (%)
FINANCIAL	14.697	0.846	4.766	0.051
SERVICES	-	1.260	2.267	0.108
INDUSTRY	30.255	2.380	2.257	0.055
OVERALL	20.143	1.135	3.718	0.064

STOCK PRICE INDEX WEIGHTED BY FREE FLOAT MARKET CAPITALIZATION (1999=1000)

	MONDAY 07/03/2022	TUESDAY 08/03/2022	% CHANGE	
			DAY BEFORE	YTD
GENERAL	2179.8	2193.9	0.65%	3.55%
FINANCIAL	2664.7	2663.5	-0.05%	2.27%
SERVICES	1329.7	1333.6	0.29%	0.46%
INDUSTRY	3924.1	4060.2	3.47%	10.76%

STOCK PRICE INDEX WEIGHTED BY FREE FLOAT MARKET CAPITALIZATION ASE20 (2014=1000)

	1128.3	1136.6	0.74%	5.79%
--	--------	--------	-------	-------

STOCK PRICE INDEX WEIGHTED BY MARKET CAPITALIZATION (1991=1000)

	MONDAY 07/03/2022	TUESDAY 08/03/2022	% CHANGE	
			DAY BEFORE	YTD
GENERAL	4131.2	4158.7	0.67%	3.83%
BANKS	6602.2	6581.8	-0.31%	0.23%
INSURANCE	1384.7	1396.7	0.87%	5.14%
SERVICES	776.8	774.9	-0.24%	-0.95%
INDUSTRY	5107.7	5230.8	2.41%	11.28%

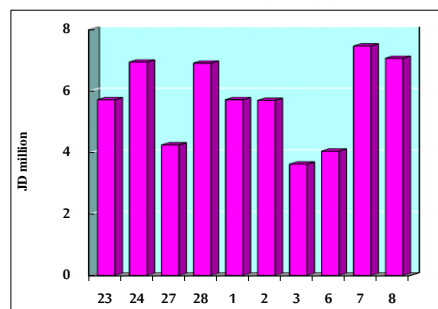
STOCK PRICE MARKET INDEX WEIGHTED BY FREE FLOAT MARKET CAP. (2012=1000)

	MONDAY 07/03/2022	TUESDAY 08/03/2022	% CHANGE	
			DAY BEFORE	YTD
FIRST MARKET	1195.4	1204.9	0.80%	5.24%
SECOND MARKET	867.8	866.2	-0.19%	-7.51%

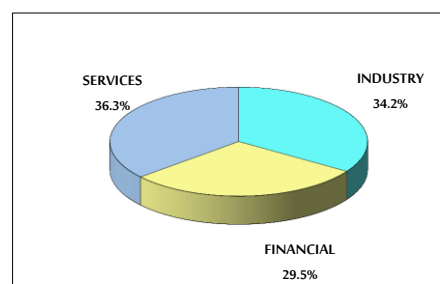
MARKET CAPITALIZATION (JD)

	15,920,407,600	16,028,613,570	0.68%	3.44%
--	----------------	----------------	-------	-------

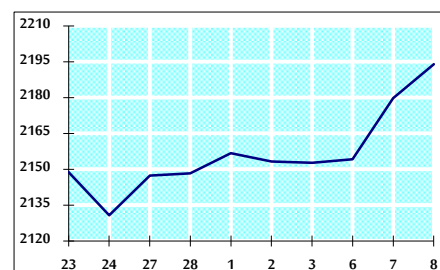
VALUE TRADED FROM 23/2 TO 8/3/2022



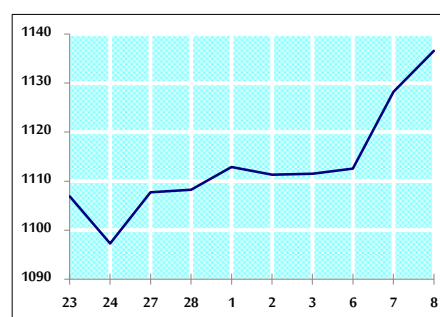
VALUE TRADED BY SECTOR TUESDAY 8/3/2022



GENERAL FREE FLOAT PRICE INDEX FROM 23/2 TO 8/3/2022



ASE20 FREE FLOAT PRICE INDEX FROM 23/2 TO 8/3/2022



GENERAL PRICE INDEX FROM 23/2 TO 8/3/2022

