

Daily Summary for Amman Stock Exchange

VALUE TRADED (JD)

	2021	2022	NET CHANGE	CHANGE (%)
Daily	8,253,239	9,247,062	993,823	12.04%
Cumulative (1/3-9/3)	50,396,999	42,838,368	-7,558,631	-15.00%
Cumulative (2/1-9/3)	398,891,877	269,259,046	-129,632,831	-32.50%

NO. OF SHARES TRADED

	2021	2022	NET CHANGE	CHANGE (%)
Daily	7,138,884	5,615,450	-1,523,434	-21.34%
Cumulative (1/3-9/3)	44,863,229	30,603,867	-14,259,362	-31.78%
Cumulative (2/1-9/3)	372,942,006	206,440,762	-166,501,244	-44.65%

NO. OF TRANSACTIONS

	2021	2022	NET CHANGE	CHANGE (%)
Daily	2,952	3,055	103	3.49%
Cumulative (1/3-9/3)	20,165	18,069	-2,096	-10.39%
Cumulative (2/1-9/3)	143,825	129,644	-14,181	-9.86%

SOME FINANCIAL RATIOS FOR THE ASE (9/3/2022)

SECTOR	P/E	P/BV	DIVIDEND YIELD (%)	TURNOVER (%)
FINANCIAL	14.668	0.844	4.782	0.093
SERVICES	-	1.261	2.265	0.088
INDUSTRY	30.637	2.405	2.233	0.073
OVERALL	20.198	1.138	3.712	0.090

STOCK PRICE INDEX WEIGHTED BY FREE FLOAT MARKET CAPITALIZATION (1999=1000)

	TUESDAY 08/03/2022	WEDNESDAY 09/03/2022	% CHANGE	
			DAY BEFORE	YTD
GENERAL	2193.9	2194.4	0.02%	3.58%
FINANCIAL	2663.5	2655.8	-0.29%	1.97%
SERVICES	1333.6	1329.9	-0.28%	0.19%
INDUSTRY	4060.2	4116.7	1.39%	12.30%

STOCK PRICE INDEX WEIGHTED BY FREE FLOAT MARKET CAPITALIZATION ASE20 (2014=1000)

	1136.6	1136.9	0.03%	5.82%
--	--------	--------	-------	-------

STOCK PRICE INDEX WEIGHTED BY MARKET CAPITALIZATION (1991=1000)

	TUESDAY 08/03/2022	WEDNESDAY 09/03/2022	% CHANGE	
			DAY BEFORE	YTD
GENERAL	4158.7	4169.7	0.26%	4.10%
BANKS	6581.8	6570.4	-0.17%	0.06%
INSURANCE	1396.7	1398.1	0.10%	5.25%
SERVICES	774.9	777.4	0.32%	-0.64%
INDUSTRY	5230.8	5276.0	0.86%	12.24%

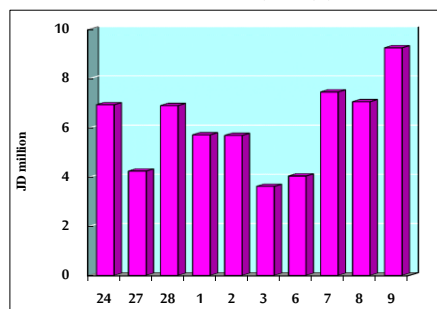
STOCK PRICE MARKET INDEX WEIGHTED BY FREE FLOAT MARKET CAP. (2012=1000)

	TUESDAY 08/03/2022	WEDNESDAY 09/03/2022	% CHANGE	
			DAY BEFORE	YTD
FIRST MARKET	1204.9	1205.6	0.06%	5.30%
SECOND MARKET	866.2	864.4	-0.20%	-7.70%

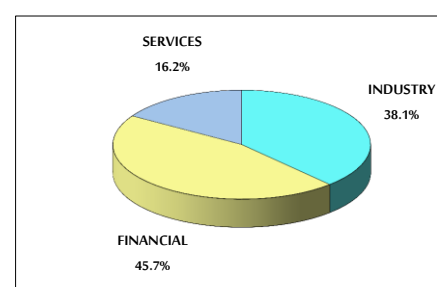
MARKET CAPITALIZATION (JD)

	16,028,613,570	16,068,602,206	0.25%	3.70%
--	----------------	----------------	-------	-------

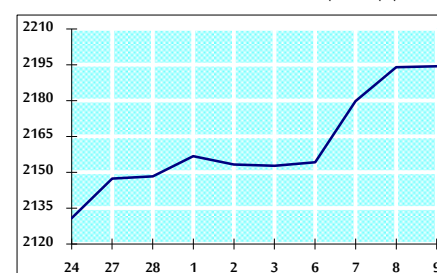
VALUE TRADED FROM 24/2 TO 9/3/2022



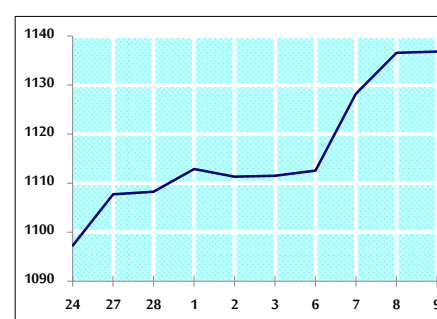
VALUE TRADED BY SECTOR WEDNESDAY 9/3/2022



GENERAL FREE FLOAT PRICE INDEX FROM 24/2 TO 9/3/2022



ASE20 FREE FLOAT PRICE INDEX FROM 24/2 TO 9/3/2022



GENERAL PRICE INDEX FROM 24/2 TO 9/3/2022

