

Daily Summary for Amman Stock Exchange

VALUE TRADED (JD)

	2021	2022	NET CHANGE	CHANGE (%)
Daily	5,523,264	5,101,699	-421,565	-7.63%
Cumulative (1/3-10/3)	55,920,263	47,940,067	-7,980,196	-14.27%
Cumulative (2/1-10/3)	404,415,141	274,360,745	-130,054,396	-32.16%

NO. OF SHARES TRADED

	2021	2022	NET CHANGE	CHANGE (%)
Daily	4,662,437	4,174,020	-488,417	-10.48%
Cumulative (1/3-10/3)	49,525,666	34,777,887	-14,747,779	-29.78%
Cumulative (2/1-10/3)	377,604,443	210,614,782	-166,989,661	-44.22%

NO. OF TRANSACTIONS

	2021	2022	NET CHANGE	CHANGE (%)
Daily	2,686	2,570	-116	-4.32%
Cumulative (1/3-10/3)	22,851	20,639	-2,212	-9.68%
Cumulative (2/1-10/3)	146,511	132,214	-14,297	-9.76%

SOME FINANCIAL RATIOS FOR THE ASE (10/3/2022)

SECTOR	P/E	P/BV	DIVIDEND YIELD (%)	TURNOVER (%)
FINANCIAL	14.699	0.843	4.789	0.053
SERVICES	-	1.266	2.156	0.116
INDUSTRY	30.246	2.384	2.254	0.058
OVERALL	20.184	1.136	3.706	0.067

STOCK PRICE INDEX WEIGHTED BY FREE FLOAT MARKET CAPITALIZATION (1999=1000)

	WEDNESDAY 09/03/2022	THURSDAY 10/03/2022	% CHANGE	
			DAY BEFORE	YTD
GENERAL	2194.4	2192.7	-0.08%	3.50%
FINANCIAL	2655.8	2654.5	-0.05%	1.92%
SERVICES	1329.9	1333.5	0.27%	0.45%
INDUSTRY	4116.7	4088.1	-0.69%	11.52%

STOCK PRICE INDEX WEIGHTED BY FREE FLOAT MARKET CAPITALIZATION ASE20 (2014=1000)

	1136.9	1137.0	0.01%	5.83%
--	--------	--------	-------	-------

STOCK PRICE INDEX WEIGHTED BY MARKET CAPITALIZATION (1991=1000)

	WEDNESDAY 09/03/2022	THURSDAY 10/03/2022	% CHANGE	
			DAY BEFORE	YTD
GENERAL	4169.7	4162.6	-0.17%	3.93%
BANKS	6570.4	6567.1	-0.05%	0.01%
INSURANCE	1398.1	1370.4	-1.99%	3.16%
SERVICES	777.4	780.6	0.41%	-0.23%
INDUSTRY	5276.0	5252.6	-0.44%	11.75%

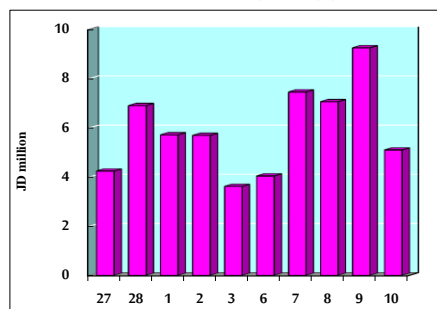
STOCK PRICE MARKET INDEX WEIGHTED BY FREE FLOAT MARKET CAP. (2012=1000)

	WEDNESDAY 09/03/2022	THURSDAY 10/03/2022	% CHANGE	
			DAY BEFORE	YTD
FIRST MARKET	1205.6	1204.3	-0.11%	5.19%
SECOND MARKET	864.4	865.2	0.08%	-7.63%

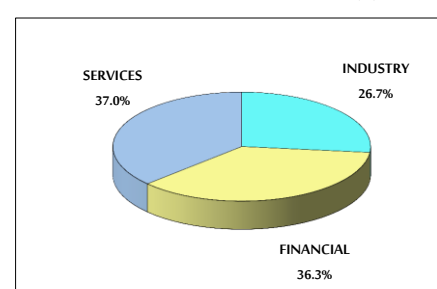
MARKET CAPITALIZATION (JD)

	16,068,602,206	16,036,722,168	-0.20%	3.49%
--	----------------	----------------	--------	-------

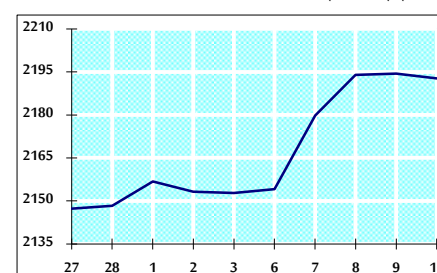
VALUE TRADED FROM 27/2 TO 10/3/2022



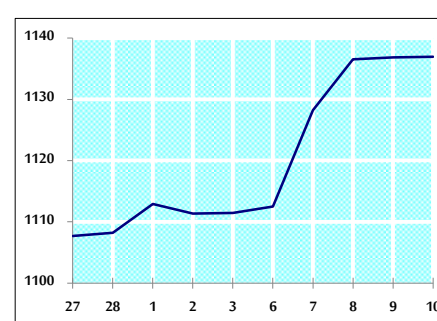
VALUE TRADED BY SECTOR THURSDAY 10/3/2022



GENERAL FREE FLOAT PRICE INDEX FROM 27/2 TO 10/3/2022



ASE20 FREE FLOAT PRICE INDEX FROM 27/2 TO 10/3/2022



GENERAL PRICE INDEX FROM 27/2 TO 10/3/2022

