

### Daily Summary for Amman Stock Exchange

VALUE TRADED (JD)

	2021	2022	NET CHANGE	CHANGE (%)
Daily	8,158,734	6,507,169	-1,651,565	-20.24%
Cumulative (1/6-8/6)	66,209,200	56,482,458	-9,726,742	-14.69%
Cumulative (2/1-8/6)	934,366,534	798,653,638	-135,712,896	-14.52%

NO. OF SHARES TRADED

	2021	2022	NET CHANGE	CHANGE (%)
Daily	4,956,512	4,308,124	-648,388	-13.08%
Cumulative (1/6-8/6)	41,244,099	27,240,030	-14,004,069	-33.95%
Cumulative (2/1-8/6)	791,530,628	466,450,452	-325,080,176	-41.07%

NO. OF TRANSACTIONS

	2021	2022	NET CHANGE	CHANGE (%)
Daily	3,748	2,981	-767	-20.46%
Cumulative (1/6-8/6)	27,460	18,708	-8,752	-31.87%
Cumulative (2/1-8/6)	352,076	319,637	-32,439	-9.21%

SOME FINANCIAL RATIOS FOR THE ASE (8/6/2022)

SECTOR	P/E	P/BV	DIVIDEND YIELD (%)	TURNOVER (%)
FINANCIAL	13.869	0.840	4.949	0.073
SERVICES	17.340	1.318	4.391	0.076
INDUSTRY	12.784	2.920	3.923	0.035
OVERALL	13.523	1.274	4.540	0.070

STOCK PRICE INDEX WEIGHTED BY FREE FLOAT MARKET CAPITALIZATION (1999=1000)

	TUESDAY 07/06/2022	WEDNESDAY 08/06/2022	% CHANGE	
			DAY BEFORE	YTD
GENERAL	2459.8	2439.5	-0.83%	15.14%
FINANCIAL	2666.6	2648.5	-0.68%	1.69%
SERVICES	1578.0	1564.1	-0.88%	17.83%
INDUSTRY	5728.8	5672.4	-0.98%	54.73%

STOCK PRICE INDEX WEIGHTED BY FREE FLOAT MARKET CAPITALIZATION ASE20 (2014=1000)

	1318.5	1305.4	-0.99%	21.50%
--	--------	--------	--------	--------

Total Return Index ASETR (2021=1074)

	1401.6	1387.7	-0.99%	29.16%
--	--------	--------	--------	--------

STOCK PRICE INDEX WEIGHTED BY MARKET CAPITALIZATION (1991=1000)

	TUESDAY 07/06/2022	WEDNESDAY 08/06/2022	% CHANGE	
			DAY BEFORE	YTD
GENERAL	4873.2	4844.8	-0.58%	20.96%
BANKS	6598.0	6577.2	-0.32%	0.16%
INSURANCE	1341.1	1341.1	0.00%	0.96%
SERVICES	772.8	771.1	-0.22%	-1.44%
INDUSTRY	7771.1	7698.1	-0.94%	63.77%

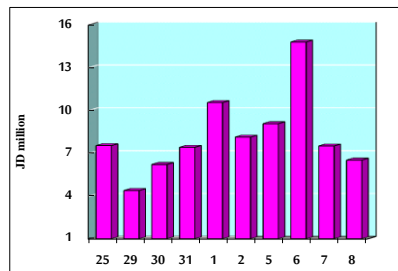
STOCK PRICE MARKET INDEX WEIGHTED BY FREE FLOAT MARKET CAP. (2012=1000)

	TUESDAY 07/06/2022	WEDNESDAY 08/06/2022	% CHANGE	
			DAY BEFORE	YTD
FIRST MARKET	1379.2	1366.6	-0.91%	19.36%
SECOND MARKET	801.7	801.1	-0.07%	-14.46%

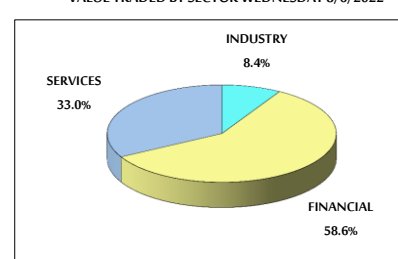
MARKET CAPITALIZATION (JD)

	18,539,960,113	18,437,061,481	-0.56%	18.98%
--	----------------	----------------	--------	--------

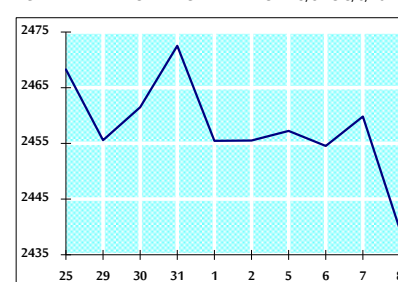
VALUE TRADED FROM 25/5 TO 8/6/2022



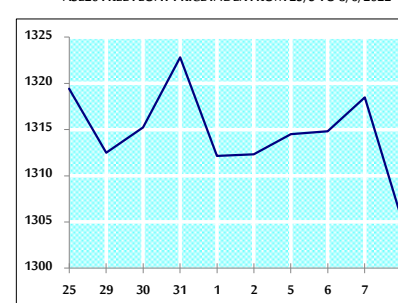
VALUE TRADED BY SECTOR WEDNESDAY 8/6/2022



GENERAL FREE FLOAT PRICE INDEX FROM 25/5 TO 8/6/2022



ASE20 FREE FLOAT PRICE INDEX FROM 25/5 TO 8/6/2022



GENERAL PRICE INDEX FROM 25/5 TO 8/6/2022

