

Daily Summary for Amman Stock Exchange

VALUE TRADED (JD)

	2021	2022	NET CHANGE	CHANGE (%)
Daily	6,373,913	4,027,690	-2,346,223	-36.81%
Cumulative (1/8-25/8)	108,452,065	159,385,032	50,932,967	46.96%
Cumulative (2/1-25/8)	1,361,869,968	1,311,122,959	-50,747,009	-3.73%

NO. OF SHARES TRADED

	2021	2022	NET CHANGE	CHANGE (%)
Daily	4,991,768	2,176,606	-2,815,162	-56.40%
Cumulative (1/8-25/8)	85,184,484	87,213,654	2,029,170	2.38%
Cumulative (2/1-25/8)	1,075,040,782	765,129,160	-309,911,622	-28.83%

NO. OF TRANSACTIONS

	2021	2022	NET CHANGE	CHANGE (%)
Daily	3,247	2,364	-883	-27.19%
Cumulative (1/8-25/8)	51,440	66,476	15,036	29.23%
Cumulative (2/1-25/8)	533,216	520,068	-13,148	-2.47%

SOME FINANCIAL RATIOS FOR THE ASE (25/8/2022)

SECTOR	P/E	P/BV	DIVIDEND YIELD (%)	TURNOVER (%)
FINANCIAL	14.428	0.873	4.758	0.022
SERVICES	19.276	1.465	3.950	0.079
INDUSTRY	12.664	2.893	3.960	0.038
OVERALL	13.825	1.309	4.399	0.035

STOCK PRICE INDEX WEIGHTED BY FREE FLOAT MARKET CAPITALIZATION (1999=1000)

	WEDNESDAY 24/08/2022	THURSDAY 25/08/2022	% CHANGE	
			DAY BEFORE	YTD
GENERAL	2562.3	2563.2	0.04%	20.98%
FINANCIAL	2684.1	2682.4	-0.06%	2.99%
SERVICES	1823.1	1827.9	0.26%	37.70%
INDUSTRY	5734.8	5735.6	0.01%	56.46%

STOCK PRICE INDEX WEIGHTED BY FREE FLOAT MARKET CAPITALIZATION ASE20 (2014=1000)

	1376.2	1375.5	-0.06%	28.03%
--	--------	--------	--------	--------

Total Return Index ASETR (2021=1074)

	1463.0	1462.2	-0.06%	36.10%
--	--------	--------	--------	--------

STOCK PRICE INDEX WEIGHTED BY MARKET CAPITALIZATION (1991=1000)

	WEDNESDAY 24/08/2022	THURSDAY 25/08/2022	% CHANGE	
			DAY BEFORE	YTD
GENERAL	4951.9	4951.1	-0.02%	23.61%
BANKS	6733.9	6732.3	-0.02%	2.53%
INSURANCE	1284.7	1280.3	-0.34%	-3.62%
SERVICES	821.8	824.5	0.33%	5.38%
INDUSTRY	7786.6	7779.4	-0.09%	65.50%

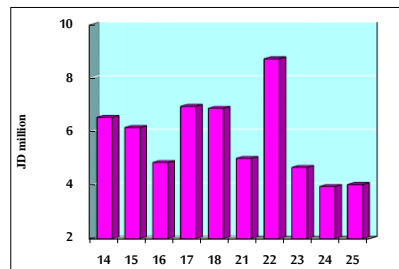
STOCK PRICE MARKET INDEX WEIGHTED BY FREE FLOAT MARKET CAP. (2012=1000)

	WEDNESDAY 24/08/2022	THURSDAY 25/08/2022	% CHANGE	
			DAY BEFORE	YTD
FIRST MARKET	1439.0	1438.7	-0.02%	25.66%
SECOND MARKET	812.7	816.5	0.46%	-12.82%

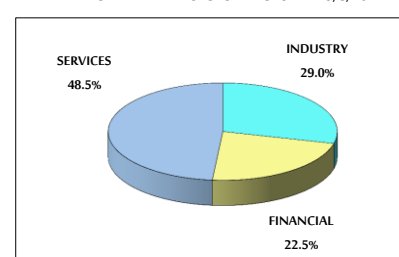
MARKET CAPITALIZATION (JD)

	18,960,834,510	18,957,451,751	-0.02%	22.34%
--	----------------	----------------	--------	--------

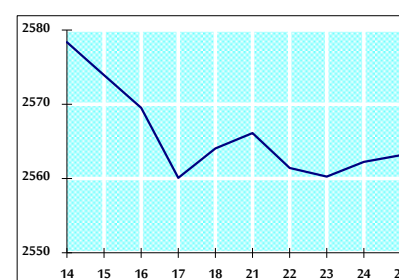
VALUE TRADED FROM 14/8 TO 25/8/2022



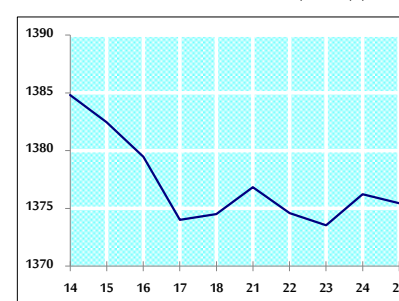
VALUE TRADED BY SECTOR THURSDAY 25/8/2022



GENERAL FREE FLOAT PRICE INDEX FROM 14/8 TO 25/8/2022



ASE20 FREE FLOAT PRICE INDEX FROM 14/8 TO 25/8/2022



GENERAL PRICE INDEX FROM 14/8 TO 25/8/2022

