

## Daily Summary for Amman Stock Exchange

### VALUE TRADED (JD)

	2021	2022	NET CHANGE	CHANGE (%)
Daily	8,457,392	6,441,825	-2,015,567	-23.83%
Cumulative (1/8-28/8)	116,909,457	165,826,857	48,917,400	41.84%
Cumulative (2/1-28/8)	1,370,327,360	1,317,564,784	-52,762,576	-3.85%

### NO. OF SHARES TRADED

	2021	2022	NET CHANGE	CHANGE (%)
Daily	4,406,334	4,484,341	78,007	1.77%
Cumulative (1/8-28/8)	89,590,818	91,697,995	2,107,177	2.35%
Cumulative (2/1-28/8)	1,079,447,116	769,613,501	-309,833,615	-28.70%

### NO. OF TRANSACTIONS

	2021	2022	NET CHANGE	CHANGE (%)
Daily	3,683	2,679	-1,004	-27.26%
Cumulative (1/8-28/8)	55,123	69,155	14,032	25.46%
Cumulative (2/1-28/8)	536,899	522,747	-14,152	-2.64%

### SOME FINANCIAL RATIOS FOR THE ASE (28/8/2022)

SECTOR	P/E	P/BV	DIVIDEND YIELD (%)	TURNOVER (%)
FINANCIAL	14.348	0.868	4.785	0.065
SERVICES	19.323	1.469	3.940	0.100
INDUSTRY	12.728	2.908	3.940	0.071
OVERALL	13.819	1.308	4.400	0.073

### STOCK PRICE INDEX WEIGHTED BY FREE FLOAT MARKET CAPITALIZATION (1999=1000)

	THURSDAY 25/08/2022	SUNDAY 28/08/2022	% CHANGE	
			DAY BEFORE	YTD
GENERAL	2563.2	2561.8	-0.06%	20.91%
FINANCIAL	2682.4	2677.9	-0.17%	2.82%
SERVICES	1827.9	1828.9	0.06%	37.78%
INDUSTRY	5735.6	5748.5	0.22%	56.81%

### STOCK PRICE INDEX WEIGHTED BY FREE FLOAT MARKET CAPITALIZATION ASE20 (2014=1000)

	1375.5	1375.4	0.00%	28.02%
--	--------	--------	-------	--------

### Total Return Index ASETR (2021=1074)

	1462.2	1462.2	0.00%	36.10%
--	--------	--------	-------	--------

### STOCK PRICE INDEX WEIGHTED BY MARKET CAPITALIZATION (1991=1000)

	THURSDAY 25/08/2022	SUNDAY 28/08/2022	% CHANGE	
			DAY BEFORE	YTD
GENERAL	4951.1	4949.1	-0.04%	23.56%
BANKS	6732.3	6688.6	-0.65%	1.86%
INSURANCE	1280.3	1294.0	1.07%	-2.58%
SERVICES	824.5	826.4	0.23%	5.62%
INDUSTRY	7779.4	7816.5	0.48%	66.29%

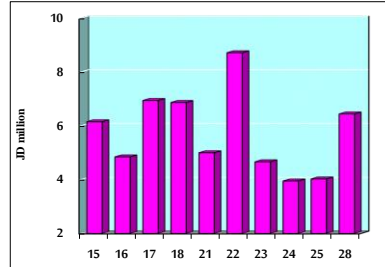
### STOCK PRICE MARKET INDEX WEIGHTED BY FREE FLOAT MARKET CAP. (2012=1000)

	THURSDAY 25/08/2022	SUNDAY 28/08/2022	% CHANGE	
			DAY BEFORE	YTD
FIRST MARKET	1438.7	1437.2	-0.11%	25.53%
SECOND MARKET	816.5	818.1	0.20%	-12.65%

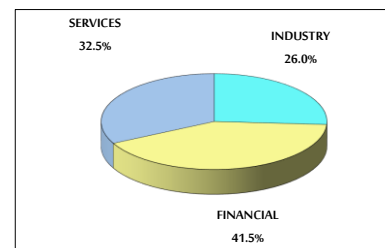
### MARKET CAPITALIZATION (JD)

	18,957,451,751	18,951,376,686	-0.03%	22.30%
--	----------------	----------------	--------	--------

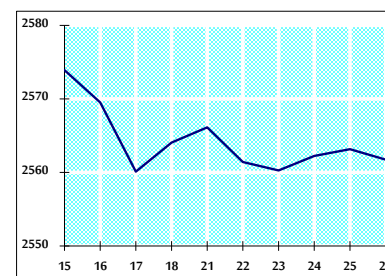
### VALUE TRADED FROM 15/8 TO 28/8/2022



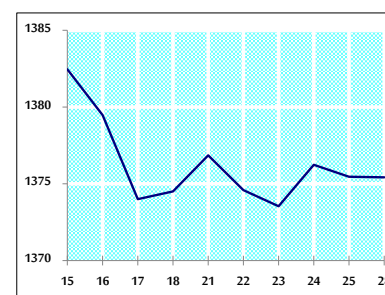
### VALUE TRADED BY SECTOR SUNDAY 28/8/2022



### GENERAL FREE FLOAT PRICE INDEX FROM 15/8 TO 28/8/2022



### ASE20 FREE FLOAT PRICE INDEX FROM 15/8 TO 28/8/2022



### GENERAL PRICE INDEX FROM 15/8 TO 28/8/2022

