

### Daily Summary for Amman Stock Exchange

VALUE TRADED (JD)

	2021	2022	NET CHANGE	CHANGE (%)
Daily	5,986,744	7,588,779	1,602,035	26.76%
Cumulative (2/10-31/10)	122,657,506	125,212,495	2,554,989	2.08%
Cumulative (2/1-31/10)	1,671,109,960	1,693,302,581	22,192,621	1.33%

NO. OF SHARES TRADED

	2021	2022	NET CHANGE	CHANGE (%)
Daily	5,392,376	6,113,003	720,627	13.36%
Cumulative (2/10-31/10)	95,478,277	87,040,050	-8,438,227	-8.84%
Cumulative (2/1-31/10)	1,306,676,187	975,410,464	-331,265,723	-25.35%

NO. OF TRANSACTIONS

	2021	2022	NET CHANGE	CHANGE (%)
Daily	3,744	3,063	-681	-18.19%
Cumulative (2/10-31/10)	65,728	57,875	-7,853	-11.95%
Cumulative (2/1-31/10)	677,337	639,529	-37,808	-5.58%

SOME FINANCIAL RATIOS FOR THE ASE (31/10/2022)

SECTOR	P/E	P/BV	DIVIDEND YIELD (%)	TURNOVER (%)
FINANCIAL	14.166	0.849	4.860	0.045
SERVICES	18.334	1.393	4.154	0.140
INDUSTRY	11.528	2.633	4.350	0.371
OVERALL	13.087	1.239	4.634	0.100

STOCK PRICE INDEX WEIGHTED BY FREE FLOAT MARKET CAPITALIZATION (1999=1000)

	SUNDAY 30/10/2022	MONDAY 31/10/2022	% CHANGE	
			DAY BEFORE	YTD
GENERAL	2468.1	2442.0	-1.06%	15.26%
FINANCIAL	2651.3	2640.8	-0.40%	1.39%
SERVICES	1711.5	1660.9	-2.96%	25.12%
INDUSTRY	5283.1	5250.0	-0.63%	43.21%

STOCK PRICE INDEX WEIGHTED BY FREE FLOAT MARKET CAPITALIZATION ASE20 (2014=1000)

	1331.2	1316.4	-1.11%	22.53%
--	--------	--------	--------	--------

Total Return Index ASETR (2021=1074)

	1415.1	1399.4	-1.11%	30.26%
--	--------	--------	--------	--------

STOCK PRICE INDEX WEIGHTED BY MARKET CAPITALIZATION (1991=1000)

	SUNDAY 30/10/2022	MONDAY 31/10/2022	% CHANGE	
			DAY BEFORE	YTD
GENERAL	4709.1	4672.2	-0.79%	16.65%
BANKS	6589.1	6530.7	-0.89%	-0.54%
INSURANCE	1392.9	1395.5	0.18%	5.05%
SERVICES	831.5	822.1	-1.13%	5.08%
INDUSTRY	7033.6	6991.1	-0.60%	48.73%

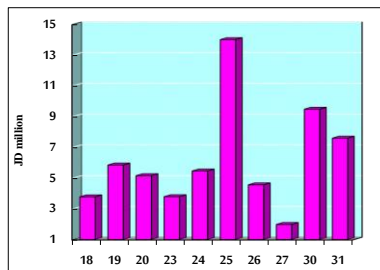
STOCK PRICE MARKET INDEX WEIGHTED BY FREE FLOAT MARKET CAP. (2012=1000)

	SUNDAY 30/10/2022	MONDAY 31/10/2022	% CHANGE	
			DAY BEFORE	YTD
FIRST MARKET	1390.4	1375.1	-1.10%	20.10%
SECOND MARKET	782.0	777.6	-0.56%	-16.98%

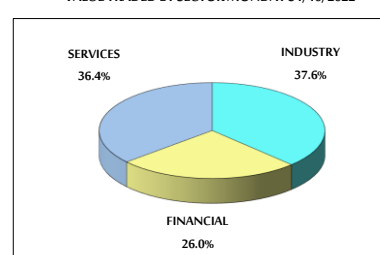
MARKET CAPITALIZATION (JD)

	17,929,057,548	17,792,060,919	-0.76%	14.82%
--	----------------	----------------	--------	--------

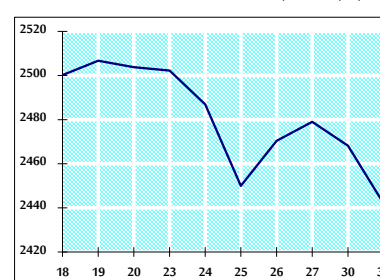
VALUE TRADED FROM 18/10 TO 31/10/2022



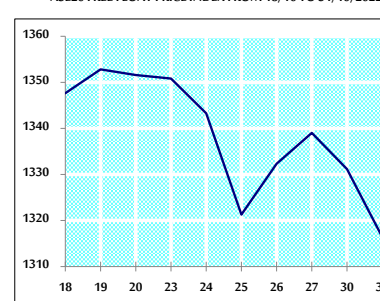
VALUE TRADED BY SECTOR MONDAY 31/10/2022



GENERAL FREE FLOAT PRICE INDEX FROM 18/10 TO 31/10/2022



ASE20 FREE FLOAT PRICE INDEX FROM 18/10 TO 31/10/2022



GENERAL PRICE INDEX FROM 18/10 TO 31/10/2022

