

## Daily Summary for Amman Stock Exchange

### VALUE TRADED (JD)

	2021	2022	NET CHANGE	CHANGE (%)
Daily	5,713,198	4,684,556	-1,028,642	-18.00%
Cumulative (1/11-1/11)	5,713,198	4,684,556	-1,028,642	-18.00%
Cumulative (2/1-1/11)	1,676,823,158	1,697,987,137	21,163,979	1.26%

### NO. OF SHARES TRADED

	2021	2022	NET CHANGE	CHANGE (%)
Daily	5,154,111	3,685,129	-1,468,982	-28.50%
Cumulative (1/11-1/11)	5,154,111	3,685,129	-1,468,982	-28.50%
Cumulative (2/1-1/11)	1,311,830,298	979,095,593	-332,734,705	-25.36%

### NO. OF TRANSACTIONS

	2021	2022	NET CHANGE	CHANGE (%)
Daily	3,383	2,503	-880	-26.01%
Cumulative (1/11-1/11)	3,383	2,503	-880	-26.01%
Cumulative (2/1-1/11)	680,720	642,032	-38,688	-5.68%

### SOME FINANCIAL RATIOS FOR THE ASE (1/11/2022)

SECTOR	P/E	P/BV	DIVIDEND YIELD (%)	TURNOVER (%)
FINANCIAL	14.301	0.857	4.814	0.034
SERVICES	18.465	1.403	4.125	0.140
INDUSTRY	11.565	2.641	4.336	0.077
OVERALL	13.179	1.248	4.602	0.060

### STOCK PRICE INDEX WEIGHTED BY FREE FLOAT MARKET CAPITALIZATION (1999=1000)

	MONDAY 31/10/2022	TUESDAY 01/11/2022	% CHANGE	
			DAY BEFORE	YTD
GENERAL	2442.0	2460.3	0.75%	16.12%
FINANCIAL	2640.8	2653.3	0.48%	1.88%
SERVICES	1660.9	1686.1	1.52%	27.02%
INDUSTRY	5250.0	5278.8	0.55%	44.00%

### STOCK PRICE INDEX WEIGHTED BY FREE FLOAT MARKET CAPITALIZATION ASE20 (2014=1000)

	1316.4	1326.0	0.73%	23.42%
--	--------	--------	-------	--------

### Total Return Index ASETR (2021=1074)

	1399.4	1409.6	0.73%	31.21%
--	--------	--------	-------	--------

### STOCK PRICE INDEX WEIGHTED BY MARKET CAPITALIZATION (1991=1000)

	MONDAY 31/10/2022	TUESDAY 01/11/2022	% CHANGE	
			DAY BEFORE	YTD
GENERAL	4672.2	4704.9	0.70%	17.47%
BANKS	6530.7	6598.0	1.03%	0.48%
INSURANCE	1395.5	1392.8	-0.19%	4.85%
SERVICES	822.1	825.5	0.41%	5.51%
INDUSTRY	6991.1	7023.5	0.46%	49.42%

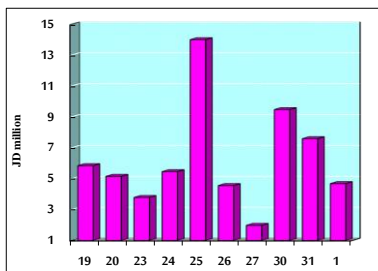
### STOCK PRICE MARKET INDEX WEIGHTED BY FREE FLOAT MARKET CAP. (2012=1000)

	MONDAY 31/10/2022	TUESDAY 01/11/2022	% CHANGE	
			DAY BEFORE	YTD
FIRST MARKET	1375.1	1385.4	0.75%	21.00%
SECOND MARKET	777.6	780.6	0.39%	-16.65%

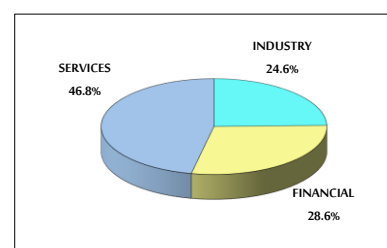
### MARKET CAPITALIZATION (JD)

	17,792,060,919	17,912,482,327	0.68%	15.60%
--	----------------	----------------	-------	--------

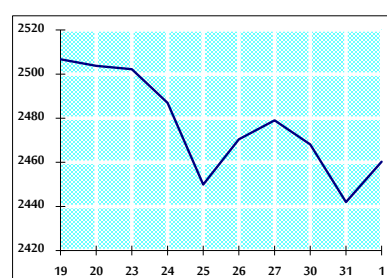
### VALUE TRADED FROM 19/10 TO 1/11/2022



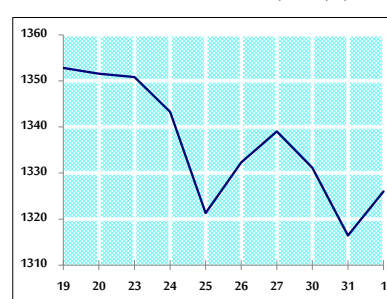
### VALUE TRADED BY SECTOR TUESDAY 1/11/2022



### GENERAL FREE FLOAT PRICE INDEX FROM 19/10 TO 1/11/2022



### ASE20 FREE FLOAT PRICE INDEX FROM 19/10 TO 1/11/2022



### GENERAL PRICE INDEX FROM 19/10 TO 1/11/2022

