

Daily Summary for Amman Stock Exchange

VALUE TRADED (JD)

	2021	2022	NET CHANGE	CHANGE (%)
Daily	6,366,376	4,397,451	-1,968,925	-30.93%
Cumulative (1/11-3/11)	19,826,563	17,318,044	-2,508,519	-12.65%
Cumulative (2/1-3/11)	1,690,936,523	1,710,620,625	19,684,102	1.16%

NO. OF SHARES TRADED

	2021	2022	NET CHANGE	CHANGE (%)
Daily	5,361,663	2,860,806	-2,500,857	-46.64%
Cumulative (1/11-3/11)	17,825,453	12,204,291	-5,621,162	-31.53%
Cumulative (2/1-3/11)	1,324,501,640	987,614,755	-336,886,885	-25.43%

NO. OF TRANSACTIONS

	2021	2022	NET CHANGE	CHANGE (%)
Daily	3,752	1,865	-1,887	-50.29%
Cumulative (1/11-3/11)	10,884	6,180	-4,704	-43.22%
Cumulative (2/1-3/11)	688,221	645,709	-42,512	-6.18%

SOME FINANCIAL RATIOS FOR THE ASE (3/11/2022)

SECTOR	P/E	P/BV	DIVIDEND YIELD (%)	TURNOVER (%)
FINANCIAL	14.242	0.853	4.834	0.028
SERVICES	18.080	1.374	4.213	0.113
INDUSTRY	11.064	2.527	4.533	0.042
OVERALL	12.891	1.221	4.705	0.047

STOCK PRICE INDEX WEIGHTED BY FREE FLOAT MARKET CAPITALIZATION (1999=1000)

	WEDNESDAY 02/11/2022	THURSDAY 03/11/2022	% CHANGE	
			DAY BEFORE	YTD
GENERAL	2440.2	2421.8	-0.75%	14.31%
FINANCIAL	2639.8	2634.7	-0.19%	1.16%
SERVICES	1666.5	1653.9	-0.76%	24.60%
INDUSTRY	5218.3	5095.4	-2.36%	38.99%

STOCK PRICE INDEX WEIGHTED BY FREE FLOAT MARKET CAPITALIZATION ASE20 (2014=1000)

	1314.8	1305.0	-0.74%	21.47%
--	--------	--------	--------	--------

Total Return Index ASETR (2021=1074)

	1397.7	1387.3	-0.74%	29.13%
--	--------	--------	--------	--------

STOCK PRICE INDEX WEIGHTED BY MARKET CAPITALIZATION (1991=1000)

	WEDNESDAY 02/11/2022	THURSDAY 03/11/2022	% CHANGE	
			DAY BEFORE	YTD
GENERAL	4667.2	4602.0	-1.40%	14.90%
BANKS	6564.9	6570.6	0.09%	0.06%
INSURANCE	1392.8	1383.3	-0.68%	4.14%
SERVICES	817.6	811.4	-0.76%	3.70%
INDUSTRY	6946.4	6724.3	-3.20%	43.06%

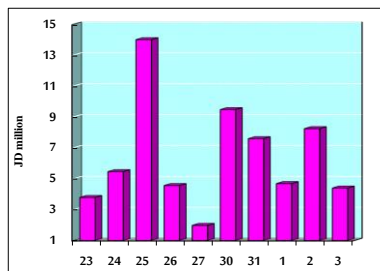
STOCK PRICE MARKET INDEX WEIGHTED BY FREE FLOAT MARKET CAP. (2012=1000)

	WEDNESDAY 02/11/2022	THURSDAY 03/11/2022	% CHANGE	
			DAY BEFORE	YTD
FIRST MARKET	1373.6	1362.5	-0.81%	19.01%
SECOND MARKET	779.2	778.1	-0.15%	-16.92%

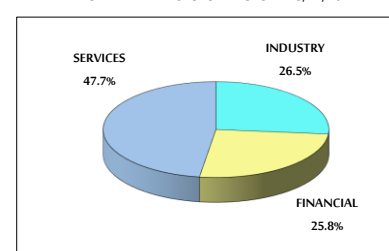
MARKET CAPITALIZATION (JD)

	17,774,730,873	17,535,622,268	-1.35%	13.16%
--	----------------	----------------	--------	--------

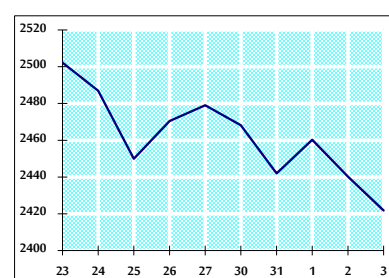
VALUE TRADED FROM 23/10 TO 3/11/2022



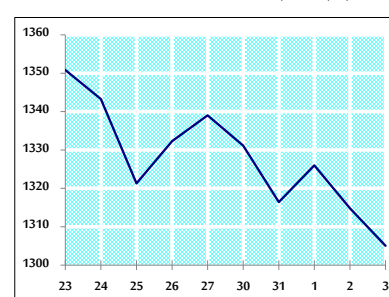
VALUE TRADED BY SECTOR THURSDAY 3/11/2022



GENERAL FREE FLOAT PRICE INDEX FROM 23/10 TO 3/11/2022



ASE20 FREE FLOAT PRICE INDEX FROM 23/10 TO 3/11/2022



GENERAL PRICE INDEX FROM 23/10 TO 3/11/2022

